

**Full title of trial**

Clinical and cost-effectiveness of an in-home personalised health promotion intervention enabling independence in older people with mild frailty ('HomeHealth'): A Randomised Controlled Trial

**Short title**

HomeHealth RCT

**Version and date of protocol**

Version 6.0 27.05.22

**Sponsor:**

University College London (UCL)

**Sponsor protocol number**

128987

**Funder (s):**

NIHR Health Technology Assessment NIHR128334

**ISRCTN no:**

[ISRCTN54268283](https://www.isrctn.com/ISRCTN54268283)

**Intervention:**

HomeHealth intervention (complex multi-domain behaviour change intervention for older people with mild frailty, delivered face to face by a support worker over six sessions)

**Control:**

Treatment as usual (TAU)

**Phase of trial**

Phase III

**Sites(s)**

Multi-site: Camden, West Yorkshire, East and North Hertfordshire

**Chief investigator:**

Professor Kate Walters  
Research Department of Primary Care and Population Health  
University College London Royal Free Campus  
Rowland Hill Street  
London, NW3 2PF  
[k.walters@ucl.ac.uk](mailto:k.walters@ucl.ac.uk)  
0208 016 8039

This document is uncontrolled				
Please refer to Priment Sopbox for current version				
HomeHealth	Version 5.0	IRAS ID: 275026	Authorisation date: 03.03.2020	Page 1 of 56

## PROTOCOL VERSION HISTORY

Version Number	Date	Protocol Update Finalised By (insert name of person):	Reasons for Update
V1.0	03.03.20	Rachael Frost	
V2.0	10.06.20	Rachael Frost	Amendments for REC and HRA and after Trial Steering Committee review
V3.0	11.11.20	Rachael Frost	Minor clarification regarding allowable time window between baseline assessment and randomisation
V4.0	09.12.20	Rachael Frost	Clarification on how goal progress will be measured for different types of goals, correcting error in study summary that stated we would adjust for therapist effect, making clear throughout that participants will be approached for further research including 24 month outcome assessment (consistency with consent form), correcting error that unblinded trial staff could include TM.
V5.0	12.11.21	Rachael Frost	1) Addition of NIHR disclaimer to funding statement as requested by our funder. 2) Removal of "Table of contents should be updated once the protocol is final" from p4. 3) Clarifications regarding expectedness due to the intervention and expectedness due to the population for adverse events. 4) Addition of local newspaper adverts and social media to our existing community-based recruitment methods. 5) Addition of offering spoken recorded versions of our study information, in English and other languages. 6) Addition of the option for a bilingual staff member

This document is uncontrolled				
Please refer to Priment Sopbox for current version				
HomeHealth	Version 5.0	IRAS ID: 275026	Authorisation date: 03.03.2020	Page 2 of 56

			from recruiting practices to call non-English speaking potential participants to explain the study.
V6.0	27.05.22	Rachael Frost	1) Updated the trial length 2) Addition of further details regarding a funded study within a project (SWAP) relating to multiple long term conditions and mild cognitive impairment as part of the process evaluation, including increases to the process evaluation sample size. 3) Additional PPI input for the SWAP. 4) Renaming Impact group to Implementation group. 5) Clarifying other stakeholders who will be interviewed as part of the process evaluation. 6) Separating goal groupings for the process evaluation into psychological, social and cognitive rather than psychosocial to allow more precise exploration of these.

**This document is uncontrolled**

Please refer to Priment Sopbox for current version

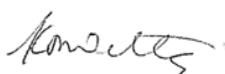
HomeHealth	Version 5.0	IRAS ID: 275026	Authorisation date: 03.03.2020	Page 3 of 56
------------	-------------	-----------------	-----------------------------------	--------------

## SIGNATURES

The Chief Investigator and Priment have discussed this protocol. The investigator agrees to perform the investigations and to abide by this protocol.

The investigator agrees to conduct the trial in compliance with the approved protocol, GCP, the UK Data Protection Act (2018), any applicable EU/UK amended acts to the Data Protection regulation, the Trust Information Governance Policy (or other local equivalent), the UK Policy Framework for Health and Social Care Research , Priment's SOPs, and other regulatory requirements as amended.

**Chief investigator**  
Professor Kate Walters



02.03.20

Signature

Date

**Sponsor**  
Pushpsen Joshi



03.03.2020

UCL

Signature

Date

This document is uncontrolled				
Please refer to Priment Sopbox for current version				
HomeHealth	Version 5.0	IRAS ID: 275026	Authorisation date: 03.03.2020	Page 4 of 56

## 1. TABLE OF CONTENTS

2	LIST OF ABBREVIATIONS.....	8
3	TRIAL PERSONNEL .....	10
4	SUMMARY .....	12
5	BACKGROUND AND RATIONALE.....	15
5.1	ASSESSMENT AND MANAGEMENT OF RISK.....	17
6	OBJECTIVES .....	19
7	TRIAL DESIGN .....	20
7.1	OVERALL DESIGN .....	20
8	INTERVENTION AND CONTROL .....	20
8.1	CONCOMITANT MEDICATION.....	21
8.2	POST-TRIAL INTERVENTION ARRANGEMENTS.....	22
9	SELECTION OF PARTICIPANTS.....	22
9.1	ELIGIBILITY OF TRIAL PARTICIPANTS.....	22
9.1.1	TRIAL PARTICIPANT INCLUSION CRITERIA.....	22
9.2	RECRUITMENT .....	22
9.3	INFORMED CONSENT PROCEDURE.....	24
10	TRIAL PROCEDURES.....	25
10.1	PRE-TREATMENT ASSESSMENTS.....	25
10.2	RANDOMISATION PROCEDURES.....	26
10.3	SUBSEQUENT ASSESSMENTS AND PROCEDURES .....	26
10.4	CLINICAL PROCEDURES.....	27
10.5	ASSESSMENT OF TRIAL INTERVENTION COMPLIANCE.....	27
10.6	DISCONTINUATION/WITHDRAWAL OF PARTICIPANTS .....	28
10.7	REPLACEMENTS .....	28
10.8	STOPPING RULES .....	28
10.9	DEFINITION OF END OF TRIAL.....	28
11	RECORDING AND REPORTING OF ADVERSE EVENTS AND REACTIONS.....	29

This document is uncontrolled				
Please refer to Priment Sopbox for current version				
HomeHealth	Version 5.0	IRAS ID: 275026	Authorisation date: 03.03.2020	Page 5 of 56

11.1	DEFINITIONS for AE .....	29
11.2	RECORDING ADVERSE EVENTS .....	30
11.3	EXPECTED SIDE EFFECTS .....	30
11.4	ASSESSMENTS OF SERIOUS ADVERSE EVENTS.....	31
11.7	PROCEDURES FOR RECORDING AND REPORTING SERIOUS ADVERSE EVENTS AND SUSPECTED UNEXPECTED SERIOUS ADVERSE EVENTS .....	31
11.8	NOTIFICATION OF DEATHS.....	34
11.9	REPORTING URGENT SAFETY MEASURES AND OTHER SAFETY EVENTS.....	34
11.10	NOTIFICATION OF SERIOUS BREACHES TO GCP AND/OR THE PROTOCOL....	34
11.11	REPORTING INCIDENTS INVOLVING A MEDICAL DEVICE(S) .....	34
12	DATA MANAGEMENT .....	34
12.1	DATA COLLECTION TOOLS AND SOURCE DOCUMENT IDENTIFICATION .....	34
12.2	DATA COLLECTION AND HANDLING .....	35
<b>12.3</b>	<b>TRIAL DATABASE .....</b>	<b>35</b>
<b>12.4</b>	<b>DATA OWNERSHIP .....</b>	<b>35</b>
13	STATISTICAL CONSIDERATIONS .....	36
13.1	OUTCOMES.....	36
13.1.1	PRIMARY OUTCOMES .....	36
13.1.2	SECONDARY OUTCOMES.....	36
13.2	SAMPLE SIZE AND RECRUITMENT.....	38
13.2.1	SAMPLE SIZE CALCULATION.....	38
13.2.2	PLANNED RECRUITMENT RATE.....	39
13.3	STATISTICAL ANALYSIS PLAN .....	39
13.3.1	SUMMARY OF BASELINE DATA AND FLOW OF PARTICIPANTS .....	40
13.3.2	PRIMARY OUTCOME ANALYSIS .....	40
13.3.3	SECONDARY OUTCOME ANALYSIS.....	40
13.3.4	SENSITIVITY AND OTHER PLANNED ANALYSES .....	40
13.3.5	HEALTH ECONOMIC ANALYSIS .....	40
13.3.6	PROCESS EVALUATION ANALYSIS.....	41
13.4	INTERIM ANALYSIS.....	43

This document is uncontrolled				
Please refer to Priment Sopbox for current version				
HomeHealth	Version 5.0	IRAS ID: 275026	Authorisation date: 03.03.2020	Page 6 of 56

---

13.5	OTHER STATISTICAL CONSIDERATIONS.....	43
14	RECORD KEEPING AND ARCHIVING .....	44
15	OVERSIGHT COMMITTEES .....	44
15.1	TRIAL MANAGEMENT GROUP (TMG) .....	44
15.2	TRIAL STEERING COMMITTEE (TSC) .....	44
15.3	DATA SAFETY AND MONITORING BOARD.....	44
15.4	IMPACT GROUP .....	45
16	DIRECT ACCESS TO SOURCE DATA/DOCUMENTS .....	45
17	ETHICS AND REGULATORY REQUIREMENTS .....	45
17.1	PATIENT AND PUBLIC INVOLVEMENT (PPIE).....	46
18	MONITORING REQUIREMENTS FOR THE TRIAL .....	46
19	FINANCE .....	46
20	INSURANCE .....	46
21	PUBLICATION POLICY .....	47
22	REFERENCES .....	48
	APPENDIX 1 – SCHEDULE OF ASSESSMENTS .....	53
	APPENDIX 2 – INTERVENTION LOGIC MODEL.....	55

This document is uncontrolled				
Please refer to Priment Sopbox for current version				
HomeHealth	Version 5.0	IRAS ID: 275026	Authorisation date: 03.03.2020	Page 7 of 56

## 2 LIST OF ABBREVIATIONS

Term	Definition
ADL	Activities of daily living
AE	Adverse Event
AR	Adverse Reaction
BI	Barthel Index
BCT	Behaviour Change Technique
BME	Black and Minority Ethnic
CCG	Clinical Commissioning Group
CI	Chief Investigator
CFS	Clinical Frailty Scale
CRF	Case Report Form
CSRI	Client Services Receipt Inventory
DI	Designated Individual
DSMB	Data Safety and Monitoring Board
eFI	Electronic Frailty Index
EU	European Union
GCP	Good Clinical Practice
GDPR	General Data Protection Regulation
GHQ-12	12 item General Health Questionnaire
GP	General Practitioner
HRA	Health Research Authority
HTA	Health Technology Assessment
ICC	Intraclass Correlation Coefficient
ICECAP-O	ICEpop CAPability measure for Older people
ICF	Informed Consent Form
IPAQ-E	International Physical Activity Questionnaire-Elderly



ISF	Investigator Site File
ISRCTN	International Standard Randomised Controlled Trial Number
LA	Local Authority
MCID	Minimal Clinically Important Difference
MCI	Mild cognitive impairment
MLTC	Multiple long term conditions
MoCA	Montreal Cognitive Assessment
NHS R&D	National Health Service Research & Development
PI	Principal Investigator
PIS	Participant Information Sheet
PPIE	Public and Patient Involvement and Engagement
QALY	Quality-adjusted Life Year
RA	Research Associate
RCT	Randomised Controlled Trial
REC	Research Ethics Committee
SAR	Serious Adverse Reaction
SAE	Serious Adverse Event
SD	Standard deviation
SOP	Standard Operating Procedure
SUSAR	Suspected Unexpected Serious Adverse Reaction
TAU	Treatment as Usual
TMG	Trial Management Group
t-MoCA	Telephone Montreal Cognitive Assessment
TSC	Trial Steering Committee
UCL	University College London
WEMWBS	Warwick-Edinburgh Mental Wellbeing Scale
YFC	Years of Full Capacity

### 3 TRIAL PERSONNEL

See protocol cover page for Chief Investigator and Sponsor contact details.

Statistician Dr Louise Marston  
 Department of Primary Care and Population Health  
 University College London  
 Royal Free Campus  
 Rowland Hill Street  
 London NW3 2PF  
 e-mail: [l.marston@ucl.ac.uk](mailto:l.marston@ucl.ac.uk)  
 tel: 0208 016 8022  
 fax: n/a

Priment Trialist Prof. Claudia Cooper  
 e-mail: [claudia.cooper@ucl.ac.uk](mailto:claudia.cooper@ucl.ac.uk)  
 tel: [tel no.]  
 fax: [fax no.]

Priment representative Anne Marie Downey  
 Senior Operations Manager  
 Priment Clinical Trials Unit,  
 Research Department of Primary Care & Population Health,  
 Royal Free Campus,  
 Rowland Hill Street,  
 London, NW3 2PF  
 e-mail: [Sponsor.PRIMENT@ucl.ac.uk](mailto:Sponsor.PRIMENT@ucl.ac.uk)  
 tel: [tel no.]  
 fax: [fax no.]

Co-applicants Dr Andrew Clegg  
 e-mail: [Andrew.Clegg@bthft.nhs.uk](mailto:Andrew.Clegg@bthft.nhs.uk)

Professor Claire Goodman  
[c.goodman@herts.ac.uk](mailto:c.goodman@herts.ac.uk)

Dr Louise Marston  
[l.marston@ucl.ac.uk](mailto:l.marston@ucl.ac.uk)

Ms Jane Hopkins  
[jemhopkins6491@gmail.com](mailto:jemhopkins6491@gmail.com)

This document is uncontrolled				
Please refer to Priment Sopbox for current version				
HomeHealth	Version 5.0	IRAS ID: 275026	Authorisation date: 03.03.2020	Page <b>10</b> of <b>56</b>

Professor Claudia Cooper

[claudia.cooper@ucl.ac.uk](mailto:claudia.cooper@ucl.ac.uk)

Professor Pip Logan

[Pip.Logan@nottingham.ac.uk](mailto:Pip.Logan@nottingham.ac.uk)

Professor Dawn Skelton

[Dawn.Skelton@gcu.ac.uk](mailto:Dawn.Skelton@gcu.ac.uk)

Associate Professor Rachael Hunter

[r.hunter@ucl.ac.uk](mailto:r.hunter@ucl.ac.uk)

Professor Jill Manthorpe

[jill.manthorpe@kcl.ac.uk](mailto:jill.manthorpe@kcl.ac.uk)

Dr Ben Gardner

[benjamin.gardner@kcl.ac.uk](mailto:benjamin.gardner@kcl.ac.uk)

Professor Vari Drennan

[V.Drennan@sgul.kingston.ac.uk](mailto:V.Drennan@sgul.kingston.ac.uk)

Dr Rachael Frost

[rachael.frost@ucl.ac.uk](mailto:rachael.frost@ucl.ac.uk)

Dr Christina Avgerinou

[c.avgerinou@ucl.ac.uk](mailto:c.avgerinou@ucl.ac.uk)

This document is uncontrolled				
Please refer to Priment Sopbox for current version				
HomeHealth	Version 5.0	IRAS ID: 275026	Authorisation date: 03.03.2020	Page 11 of 56

## 4 SUMMARY

### Objectives:

1. Test the clinical effectiveness of HomeHealth in maintaining independence in a randomised controlled trial (RCT)
2. Determine the cost-effectiveness of HomeHealth
3. Quantify the cost/savings of HomeHealth to different health and social care providers
4. Explore the context, mechanisms and impact of the intervention and barriers and levers to implementation at scale in a parallel mixed-methods process evaluation and impact stream.

**Study Within a Project:** An additional study within a project will extend the process evaluation to explore the impact of 1) number and type of multiple long term conditions and 2) mild cognitive impairment on study outcomes and engagement with behaviour change in HomeHealth.

### Type of trial:

Single-blind two arm individually randomised controlled trial of the HomeHealth intervention compared to Treatment As Usual (TAU) in older people with mild frailty, with an embedded process evaluation.

### Trial design and methods:

An individually randomised, parallel-group, multi-site trial comparing the HomeHealth intervention to TAU. The HomeHealth intervention is a multidomain six-month behaviour change intervention delivered face-to-face by a support worker in participants' homes. Participants will be individually randomised using sealed envelope web based online system set up by Priment Clinical Trials Unit (CTU) after baseline assessment. Data will be collected at 0, 6 and 12 months face-to-face, by video or by telephone, by a Research Associate (RA) blinded to intervention status. The primary outcome measure is basic Activities of Daily Living (modified Barthel Index, 12 months). Secondary outcomes include: Instrumental ADLs (Nottingham Extended Activities of Daily Living), Fried Frailty Phenotype score (components: gait speed, grip strength, physical activity (International Physical Activity Questionnaire-Elderly (IPAQ-E)), exhaustion, weight loss), wellbeing (Warwick-Edinburgh Mental Wellbeing Scale (WEMWBS)), loneliness (UCLA 3-item), psychological distress (12 item General Health Questionnaire

This document is uncontrolled				
Please refer to Priment Sopbox for current version				
HomeHealth	Version 5.0	IRAS ID: 275026	Authorisation date: 03.03.2020	Page <b>12</b> of <b>56</b>

(GHQ-12)), cognition (Montreal Cognitive Assessment (MoCA)), falls (ProFANE consensus criteria), mortality and carer burden. At each timepoint we will also collect data on Covid-19 status, whether the participant is classed as 'clinically extremely vulnerable' and data on long term health problems as a result of Covid-19. We will also seek consent to be involved in further research (e.g. collecting 24 month routine data as a post-trial follow up). For the health economic analysis, we will collect quality of life (EQ-5D-5L), capability (ICEpop CAPability measure for Older people (ICECAP-O)), healthcare and additional services (e.g. paid and unpaid care) utilisation (modified Client Services Receipt Inventory (CSRI) and primary care medical record extraction).

**Process evaluation:** We will carry out an embedded process evaluation. After trial completion, we will carry out 40 semi-structured interviews with a purposive sample of participants, service providers and stakeholders. We will also collect intervention process data from trial documentation (e.g. goals set, appointments attended) and audio-recordings of intervention appointments. The process evaluation will additionally explore the impact of Covid-19 upon intervention delivery, particularly use of videoconferencing and telephone appointments, technical issues and support needed, and perceived impact upon intervention delivery.

**Study Within a Project:** We will collect around 25 additional interviews with participants purposively sampled for 1) number and type of LTC and 2) mild cognitive impairment and utilise existing quantitative process and trial data to explore the how these affect study outcomes and engagement with behaviour change.

**Trial duration per participant:**

12 months (up to 13 months for participants taking part in process evaluation interviews). Participants will also be consented to be approached for further research (e.g. at 24 months for longer-term follow-up).

**Estimated total trial duration:**

30 months

**Planned trial sites:**

Camden, Yorkshire, Hertfordshire

This document is uncontrolled				
Please refer to Priment Sopbox for current version				
HomeHealth	Version 5.0	IRAS ID: 275026	Authorisation date: 03.03.2020	Page <b>13</b> of <b>56</b>

<b>Total number of participants planned:</b>	386
<b>Main inclusion/exclusion criteria:</b>	<p>Inclusion criteria: Community-dwelling older people aged 65+ years with mild frailty defined using the Clinical Frailty Scale (those with more evident slowing and needing help in Instrumental Activities of Daily Living e.g. finances, heavy housework, shopping)</p> <p>Exclusion criteria: Those in care homes, on palliative care register, who lack capacity to consent, already case managed (e.g. by community teams).</p>
<b>Statistical methodology and analysis:</b>	The primary outcome will be analysed by intention-to-treat using mixed effects linear regression, controlling for site (the stratification variable) and baseline BI score. Secondary outcomes will be analysed with analogous linear or logistic regressions.
<b>Health economic analysis</b>	For the health economic analysis, we will calculate the mean incremental cost per quality adjusted life year and years full of capability gained for the duration of the trial and report this from cost perspectives of the NHS and personal and social care services. We will conduct a budget impact analysis to quantify the costs to different health and social care providers.
<b>Process evaluation analysis</b>	We will undertake a mixed-methods process evaluation exploring fidelity, dose and reach of the intervention, potential mechanisms, contextual factors, pathways to impact and impact of Covid-19 upon intervention delivery. Interviews will be recorded, transcribed and analysed using thematic analysis. Normalisation process theory will be used to explore barriers and facilitators to implementation. We will compare the characteristics of participants to area level characteristics. We will descriptively summarise the use of videoconferencing and telephone appointments and any issues arising from this. We will explore mechanisms/pathways to impact including goals selected, goal attainment, intervention effects stratified by behavioural target(s) chosen and impact of the intervention on behavioural outcomes.
<b>Study within a project</b>	Within the process evaluation, we will carry out additional quantitative analyses exploring types of goals set, progress towards goals, attendance, mode of delivery and effects on

This document is uncontrolled				
Please refer to Primint Sopbox for current version				
HomeHealth	Version 5.0	IRAS ID: 275026	Authorisation date: 03.03.2020	Page <b>14</b> of <b>56</b>

functioning and psychological distress according to number and type of LTC and presence of cognitive impairment. We will collect further interview data in existing and additional interviews on how MLTCs and mild cognitive impairment affects engagement with behaviour change, the service and goal setting and carry out separate thematic analyses on these topics.

## 5 BACKGROUND AND RATIONALE

Frailty is a condition caused by the accumulation of multiple deficits and reduction in physiological reserves that occur across multiple body systems as we age (1). Frail individuals have poor recovery from even minor events, such as a urinary tract infection or a non-injurious fall, and are vulnerable to multiple adverse health outcomes including falls, disability, hospitalisation, moves to care homes, dementia, poor quality of life and death (1-4). Healthcare costs estimated to be 5-6 times higher in frail older people compared to those who are robust (5). The impact of frailty on health and social care is likely to increase as the number of people aged 75+ in the UK is estimated to rise from 5.2 million to 9.9 million by 2039 (6).

Frailty is best understood as a continuum, from those in robust health to those with severe frailty. The prevalence of frailty varies depending on how it is measured, but around 11% of people aged 65+ years worldwide (7) and 14% in England (8) can be categorised as physically frail, while 13% can be defined as ‘mildly frail’ (9). Mild frailty is an intermediate stage where a person has some loss of physiological reserves but can recover after a stressor event (10). They typically feel “slowed up”, with increasing need for assistance in instrumental activities of daily living e.g. cooking, shopping and money management (9). Mild frailty is associated with adverse outcomes, including a progressive functional decline (11) and 2.5 times the risk of a move to care homes compared to those without frailty (12). Those with mild frailty can progress to severe frailty (13) with increasing loss of independence, need for care and other adverse outcomes. However this is not inevitable (10, 13) and may be modifiable.

Previous interventions have often focussed on preventing decline or reducing frailty in the highest-risk populations with moderate-severe frailty, with limited success (14, 15). By contrast, older people with mild frailty are more likely to transition back to non-frailty or remain stable than those who are frailer (13, 16), and health promotion interventions may be more effective with less frail populations (17, 18). This forms a good rationale to target a new health promotion intervention at those with mild frailty, aiming to delay/slow decline, maintain independence and ‘compress morbidity’ into the final stages of life (19).

Home-based interventions, largely based upon comprehensive geriatric assessment, typically by nurses, seem promising in frailer older people, with reported beneficial effects on mortality, functioning and emergency department admissions (20-22). However, these can be expensive, resource intensive

This document is uncontrolled				
Please refer to Primint Sopbox for current version				
HomeHealth	Version 5.0	IRAS ID: 275026	Authorisation date: 03.03.2020	Page <b>15</b> of <b>56</b>

(requiring specialist input) and difficult to deliver at scale. In current NHS practice, case management approaches focus on high risk groups (e.g. moderate-severe frailty) identifying deficits/problems with signposting and follow-up to address these. Designed in response to service needs, the opportunities to promote ongoing behaviour change can be missed or given a lower priority. Older people themselves tend to view successful ageing as including both biomedical (physical, mental and cognitive) and psycho-social components (23), such as meaningfully connecting to the world they live in. Their key priority is maintaining their independence (24). While health and social care professionals are mindful of psycho-social factors and context, they often lack resources, time, techniques, and/or skills to be able to directly address these.

Systematic reviews in our previous developmental work found that little was known about effective or cost-effective interventions for those with mild frailty (25). Interventions for frail older people often lacked a clear theoretical basis, rigorous development or stakeholder input (26). Other studies have shown some promising multi-domain interventions in different populations/settings, particularly those including an exercise component, however with mixed findings and limited data on cost-effectiveness (15, 27-32). Current healthcare for this group includes few ‘upstream’ approaches (33), with a lack of evidence based health promotion approaches that are both feasible to deliver in the NHS and its partners and acceptable to older people (25).

Our previous development study, following MRC guidelines (34), resulted in a complex evidence and theory-based multi-domain health promotion intervention delivered over six months. This was developed in partnership with stakeholders and based on behaviour change principles (35) (for more information see Section 7.1). We conducted a feasibility Randomised Controlled Trial (RCT) with older people with mild frailty individually randomised to our HomeHealth intervention or ‘Treatment as Usual’ (TAU) recruited from four diverse General Practices in Camden, London and Hertfordshire. The study was highly successful: we recruited to target ( $n=51/50$ ), in less time than anticipated (4.5months, not 6) with 96% retention at 6 months (36). There was no evidence of control group contamination, supporting our individually randomised approach, and minimal missing data ( $<1\%$ ). The intervention was well-received and delivered at modest cost (£307/patient). Our process evaluation demonstrated through interviews, questionnaires and process data that the intervention was feasible to deliver and acceptable to participants, with few suggested improvements. Fidelity (delivery as planned) was 77%, with a 91.3% appointment attendance rate. We found significantly better functioning (Barthel Index;  $+1.68$ ,  $p=0.004$ ), grip strength ( $+6.48\text{kg}$ ,  $p=0.02$ ), reduced psychological distress (GHQ-12;  $-3.92$ ,  $p=0.01$ ) and increased capability-adjusted life years ( $+0.017$ ,  $p=0.03$ ) at 6 months compared to TAU, with no differences in other outcomes. NHS and carer-support costs were variable, but overall lower in the intervention arm. We concluded that this model should be tested in a definitive trial with multiple sites and longer follow up. This trial therefore aims to assess the clinical and cost-effectiveness of the HomeHealth intervention for older people with mild frailty compared to TAU.

This document is uncontrolled				
Please refer to Priment Sopbox for current version				
HomeHealth	Version 5.0	IRAS ID: 275026	Authorisation date: 03.03.2020	Page <b>16</b> of <b>56</b>



Currently, there are recommended interventions in primary care for those who are moderately or severely frail, but no standard of care exists for mildly frail groups. Within our feasibility trial, the TAU group attended routine GP and practice nurse appointments, but had minimal use of other services that might be relevant for this population e.g. falls prevention classes. All sites have agreed that they do not plan to change services for people with mild frailty in the next three years. Our comparator for this trial is therefore TAU. Within the trial, it is impossible to blind participants as to whether or not they are receiving the service as it can be clearly differentiated from TAU. The trial will therefore be single blind (blinded outcome assessors).

## 5.1 ASSESSMENT AND MANAGEMENT OF RISK

We do not consider this trial to be high risk. The study personnel and co-investigators will ensure that the study is conducted in line with NHS and professional ethical and research governance guidelines. Training and regular supervision will be provided to researchers on study procedures by the CI, PIs and trial manager. Training and central supervision will also be provided to support workers delivering the intervention.

**Lone working:** Researchers will follow the UCL lone working policy which can be found on the UCL website: [http://www.ucl.ac.uk/estates/safetynet/guidance/lone\\_working/lone\\_working.pdf](http://www.ucl.ac.uk/estates/safetynet/guidance/lone_working/lone_working.pdf)

Researchers will offer participants the option of remote follow up assessments. Researchers will carry mobile phones and they will be able to contact the CI or trial manager during work hours and out of hours. Researchers will contact a member of the study team if they are not returning to the office after an assessment. The study team will have addresses, phone numbers and next of kin details of all researchers. Support workers will follow lone working guidelines at their employing institution.

**Confidentiality:** All members of the research team will have undertaken and will provide certification for Good Clinical Practice, information governance and data protection training.

For baseline and outcome assessments, electronic and/or paper CRFs will be collected. Self-report questionnaires will be posted back to the research team if completed remotely. For the process evaluation, paper and electronic data will be collected. CRFs, intervention process data (e.g. fidelity checklist) and audio transcripts will be pseudonymised, labelled by participant ID and initials. Paper and audio recorded intervention and assessment data will be stored securely during transfer and will be transferred to the appropriate site secure storage as soon as feasible. Any videoconferencing for remote assessments or intervention delivery will be conducted over a secure platform. Intervention process and interview data will be stored separately to CRFs. Audio data will be uploaded as quickly as feasible to a secure folder and the recording deleted from the recorder. Sensitive personal data will be stored in the UCL Data Safe Haven or locked filing cabinets with limited access; pseudonymised data will be stored in separate locked filing cabinets or password protected folders with limited access to only authorised personnel.

If participants disclose information to a RA leading them to believe that the participant or others are at significant risk, the researcher will discuss it with the site PI and/or the trial's Clinical Safety lead and if

This document is uncontrolled				
Please refer to Primint Sopbox for current version				
HomeHealth	Version 5.0	IRAS ID: 275026	Authorisation date: 03.03.2020	Page 17 of 56

appropriate, will seek consent from the participant to contact the participant's GP or a local safeguarding service as appropriate. If participants disclose information to a support worker leading us to believe that they or others are at significant risk, they will contact their clinical supervisor in the first instance and will seek consent to contact the participant's GP or a local safeguarding service as appropriate, and will also inform the study team (CI, Clinical Safety Lead and site PI).

**Lack of intervention fidelity:** The intervention is manualised. Support workers will receive five days initial interactive case-based and skills focused training. Core training will be supplemented by other mandatory training (e.g. adult safeguarding, information governance) and one day 'top-up' training in exercise, nutrition and behaviour change 2-3 months after starting intervention delivery. Support workers will receive 2 weekly group supervision, with one-to-one supervision as needed. Ongoing supervision and support by telephone or videoconferencing from experts in behaviour change, communication skills, exercise, nutrition and mood will also be available to support workers. We will document fidelity within the process evaluation through audio-recording appointments and checking 10% of participants' appointments against a checklist from our feasibility trial.

**Trial conduct:** The trial will be overseen by a Trial Steering Committee (see Section 13), and supported by Priment CTU. Priment CTU will support and provide expertise in trial methodology, conduct, management, safety reporting, quality assurance monitoring Priment will also support the trial database development and will develop and implement the statistical and economic analysis plans and will lead on the health economic and statistical analysis. There will be regular team meetings in place and email or phone communication as needed. The research team will keep in regular contact with the sites. As this is a single-blind study, there is a small risk that assessors may become unmasked. We will minimise this risk by asking the assessors to remind participants at each stage that they must not reveal their treatment arm allocation to their assessor. Assessors will be blinded to the arm allocation within the Sealed Envelope database via their access role. If an assessor does become unmasked, the study team will record this and ask an alternative assessor to complete future outcome measures for that participant. At the end of assessment for each participant the assessor will record which study group they believe the participant has been allocated to in order to verify blinding.

The table below summarises the risks and mitigations of all tests above standard care that are being performed:

Name of Intervention/ Assessments/ design and Methods/ trial Population	Potential risk	Risk Management
Gait speed measurement, weight	Falls risk	This will only be carried out if a face-to-face assessment is possible and it is optional for the participants. Researcher will be trained and will take care with the participant. Participants are

This document is uncontrolled				
Please refer to Priment Sopbox for current version				
HomeHealth	Version 5.0	IRAS ID: 275026	Authorisation date: 03.03.2020	Page <b>18</b> of <b>56</b>

measurement, height measurement		not likely to be high risk (high risk participants are likely to be moderately frail and so will be excluded from the trial)
MoCA	Risk of participant distress or concern if failing some items	Researcher will make it clear to participants that this is not a diagnostic test for dementia, will not disclose total score and will signpost participant to consult their GP if they have further concerns
Managing red flags	Managing red flags such as marked weight loss or very distressed on GHQ12	Researcher or support worker will discuss any red flags with the CI, site PI or Clinical Safety Lead and if appropriate, will seek consent to inform the participant's GP or a local safeguarding service.
Covid-19 transmission	Risk of transmission between research team and participants, and HomeHealth workers and participants	A decision making flow chart has been developed to put in place contingency plans regarding remote assessments and intervention delivery in accordance with the current risk level. Implementation of contingency plans will be assessed on an ongoing basis and light of any national changes, and will subject to approval by the TSC and funder.

## 6 OBJECTIVES

Primary: Test the clinical effectiveness of HomeHealth in maintaining independence in a randomised controlled trial (RCT).

Secondary:

1. Determine the cost-effectiveness of HomeHealth.
2. Quantify the cost/savings of HomeHealth to different health and social care providers.
3. Explore the context, mechanisms and impact of the intervention for different populations (age, gender, deprivation, ethnicity, rurality) and barriers and levers to implementation at scale in an embedded mixed-methods process evaluation and impact stream.

An additional study within a project will also be carried out to explore:

- i) How multiple long term conditions (MLTCs) interact with behaviour change approaches such as setting and achieving goals,
- ii) How MLTCs may impact on engagement with a health promotion service for older people with mild frailty
- iii) The impact of MLTCs on the effectiveness of a behaviour change intervention in promoting independence and reducing psychological distress

This document is uncontrolled				
Please refer to Primet Sopbox for current version				
HomeHealth	Version 5.0	IRAS ID: 275026	Authorisation date: 03.03.2020	Page <b>19</b> of <b>56</b>

- iv) If and how multiple long term physical health conditions differ from those where a mental health condition is a comorbidity with regards to behaviour change techniques (BCTs) and outcomes.
- v) Whether and how mild cognitive impairment (MCI) influences the effectiveness of behaviour change interventions for the health and wellbeing of older adults
- vi) How having MCI influences the maintenance of behaviour change

## 7 TRIAL DESIGN

### 7.1 OVERALL DESIGN

Single-blind two-arm individually randomised trial comparing the HomeHealth intervention to TAU in older people with mild frailty. Participants will receive the individualised, multi-domain behaviour change intervention in six sessions over six months. Data will be collected at baseline, six months and 12 months by blinded outcome assessors. Participants will be additionally consented to be approached for longer-term (post-trial) follow-up using routinely collected data from NHS and local authority social care.

## 8 INTERVENTION AND CONTROL

‘HomeHealth’ is an individualised multi-domain behaviour change intervention based upon evidence and theory, which has been co-designed with stakeholders (see Appendix 2 for logic model). It was developed and tested in an initial feasibility study (34). Participants are initially offered up to six individual one-to-one sessions with a support worker over six months, and where needs are more complex more sessions (up to maximum 12) can be offered within this period. Complex needs may include situations such as participants with a combination of complex physical, cognitive and mental health needs who may need extra support or carer involvement to develop achievable goals and overcome barriers, or where new needs or events arise during the intervention period (e.g. a hospital admission or fall) which may require re-setting goals or further support to overcome any associated setbacks. The first session will be face-to-face where possible, in accordance with current Government guidelines and using any personal protective equipment or social distancing measures in line with current guidance, with subsequent sessions delivered face to face, by videoconferencing or by telephone according to participants’ needs. If it is not possible to deliver the intervention face-to-face, potential participants will be offered the opportunity to defer enrolment in the trial until a later date or carry out all sessions by videoconferencing or telephone. If the participant does not have a device to undertake videoconferencing but would like to use this method, we will provide them with an internet-enabled study funded tablet to encourage participation, and the support worker will provide support with any technical issues. The number, duration and contact type of sessions attended by each intervention participant will be documented and summarised in the embedded process evaluation. The impact of remote delivery will also be explored. At least three intervention sessions will be considered a minimum dosage.

Core domains covered by the intervention include mobility (physical activity, exercise and falls prevention), under-nutrition or risk of malnutrition, mood (depression/anxiety) and social engagement,

This document is uncontrolled				
Please refer to Priment Sopbox for current version				
HomeHealth	Version 5.0	IRAS ID: 275026	Authorisation date: 03.03.2020	Page <b>20</b> of <b>56</b>

with the potential for participants to include additional goals (e.g. modifying their home environment). In each session, participants set and address self-directed independence and wellbeing goals, supported by a HomeHealth support worker through education, skills-training, overcoming barriers, providing feedback, maximising motivation, coping with setbacks and promoting habit formation. The support worker undertakes an initial behavioural assessment, considering the participant's capability, opportunity and motivation to change and their overall outcomes goals are broken down into behavioural goals and 'SMART' objectives (Specific, Measureable, Achievable, Realistic, Timely). This assessment can include strategies to compensate for common problems causing barriers to change in this population e.g. fatigue, urinary incontinence. The support is individually tailored, and for frailer individuals or those with cognitive impairment this may include involving another person (e.g. family member or friend), or providing practical support to overcome barriers, such as technology or provision of aids. Baseline function (capability) is taken into account – for example the exercise/physical activity programme (exercises and intensity) will be tailored to ability and falls risk. Subsequent sessions then include reviewing goals and progress, addressing problem solving, coping with setbacks and low motivation, modifying or developing new goals as needed, forming an action plan and maintaining behavioural changes.

The service is delivered by a trained support worker who has experience working with older people, but without specialist qualifications. They are based within either primary care or community/voluntary sector teams working with older people. There will be some local variation in this, but providers may be voluntary sector (e.g. Age UK) or within a Community Multi-Disciplinary Team (MDT) providing services for older people with frailty within local areas. Where appropriate support workers will encourage or enable participants to access local services, e.g. falls prevention schemes, psychological therapies, hearing/low vision aids, continence services, transport, dieticians, memory clinics, debt/housing/benefits advice, etc.

The control group will receive Treatment As Usual (TAU), as currently there is no standard of care delivered specifically for a mildly frail population. In our feasibility study, this included usual GP and practice nurse appointments, with some participants using secondary care services. Few accessed other health promotion services that might be suitable for this population, e.g. falls prevention classes.

## 8.1 CONCOMITANT MEDICATION

There are no inclusion or exclusion criteria based on concomitant medication, as these are unlikely to confound the results of the trial. All medications taken during the trial period by participants will be collected in a CRF retrospectively from their medical notes by a RA. All other interventions received e.g. physiotherapy, psychological therapy, will be collected by participant self-report using a modified Client Services Receipt Inventory.

This document is uncontrolled				
Please refer to Priment Sopbox for current version				
HomeHealth	Version 5.0	IRAS ID: 275026	Authorisation date: 03.03.2020	Page <b>21</b> of <b>56</b>

## 8.2 POST-TRIAL INTERVENTION ARRANGEMENTS

The intervention is carried out for a six month period per participant, and therefore there are no arrangements to continue the trial intervention after the ending of the trial. Throughout the study, we will work with an implementation group to develop a strategy for if and how the intervention should be more widely implemented if effective.

## 9 SELECTION OF PARTICIPANTS

### 9.1 ELIGIBILITY OF TRIAL PARTICIPANTS

#### 9.1.1 TRIAL PARTICIPANT INCLUSION CRITERIA

- Older people aged 65+
- Registered with a general practice within the participating site area
- Scoring as '5. Mildly frail' on the Rockwood Clinical Frailty Scale
- Community-dwelling (including extra care housing)
- Life expectancy of >6 months
- Capacity to consent to participate

People with dementia will not be excluded from the study, providing they fit the above criteria.

#### 9.1.2 TRIAL PARTICIPANT EXCLUSION CRITERIA

- Care home residents
- Those with moderate to severe frailty (6-9 on Rockwood Clinical Frailty Scale (CFS)) or not frail (1-4 CFS)
- Receiving palliative care
- Already case managed
- Lack capacity to consent

### 9.2 RECRUITMENT

We will recruit older people with mild frailty registered with a General Practice within three geographically, ethnically and socially diverse areas; Camden Clinical Commissioning Group (CCG) (London), Airedale, Wharfedale & Craven CCG (West Yorkshire) and East & North Hertfordshire CCG. We anticipate recruiting 6-9 General Practices per area, that will represent diverse neighbourhoods (e.g. rural areas, areas with high deprivation, and high proportions of black and minority ethnic (BAME) populations). Recruitment is outlined in a flow chart in Appendix 3. Practices will conduct list searches using the electronic frailty index (eFI) (37), which classifies patients into those with mild, moderate and severe frailty. We will exclude those who are robust or with severe frailty. Practices will review the list of those identified with mild or moderate frailty (the eFI is known to be over-sensitive in comparison to clinical judgement). Clinicians within the practices will be asked to use their existing knowledge of

This document is uncontrolled				
Please refer to Priment Sopbox for current version				
HomeHealth	Version 5.0	IRAS ID: 275026	Authorisation date: 03.03.2020	Page <b>22</b> of <b>56</b>

patients or medical records and the Clinical Frailty Scale (CFS) criteria to exclude those known to be very fit – managing well (categories 1-3), and those known to be clearly moderately frail or worse (category 6 or more), plus those who meet the additional exclusion criteria. Practices will then send postal invitations to those who are potentially eligible (i.e. with initial mild or moderate frailty on the eFI and either unknown/uncertain frailty status (using the CFS with existing knowledge) or who are considered ‘vulnerable’ or mildly frail (categories 4 or 5)). If practices have a large number of patients who do not speak English, we will ask them if they would be willing for a bilingual practice staff member to ring potential participants to discuss the study. Postal invitation packs will include an invitation letter, a leaflet about the study, a leaflet about the HomeHealth service and a reply slip. Invitation letters and leaflets include a series of questions on frailty symptoms (e.g. weakness, excessive tiredness, feeling it is taking longer/more difficult to do things) to allow for self-identification. We will provide audio recorded spoken versions of our study information leaflets on our website, in English and other relevant languages. Those who positively self-identify as potentially eligible and are interested in participating will be asked to return the reply slip to the RA at each site.

In addition, health and social care professionals including GPs, practice nurses/health care assistants, community teams, social workers and care navigators and those working in the voluntary sector (e.g. Age UK, local support groups) will be able to refer people they judge as potentially eligible (having mild frailty) directly. Older people or carers can also self-refer for inclusion screening from posters and/or leaflets that will be distributed in community venues, such as GP waiting rooms, community pharmacies, sheltered or extra care housing facilities, libraries, day centres, lunch clubs, carer centres and faith groups. We will publicise the study in these facilities, including outreach work including giving talks in venues that are likely to have eligible people attending, with a particular focus on those who may not participate through contact via their GP (e.g. BAME groups, in more deprived areas etc). We will also recruit virtually through relevant community groups such as local Age UK groups, University of the Third Age and older people’s forums, through asking them to circulate study leaflets to members. We will post advertisements in local newspapers and on relevant social media sites. Those who express an interest will contact the research team at their site or at the central UCL site directly for screening.

The RA at each site will conduct telephone screening using the study inclusion and exclusion criteria, and if the person is eligible, send a copy of the participant information sheet (PIS) with an appointment letter confirming the time of the baseline assessment (which will be at least 24 hours after planned receipt of the PIS). At baseline assessment the RA will confirm eligibility, check the participant has read the PIS and ask if they have any questions, and seek informed consent prior to undertaking assessments. Researchers will keep screening logs on all participants expressing an interest, including numbers who refused participation, numbers ineligible and reasons for ineligibility.

### Process evaluation

For the process evaluation, existing participants in the intervention arm who have completed the final outcome assessment will be sent an invitation to participate in an interview by an unblinded RA. We will aim to recruit approximately 20 participants receiving the service (including carers where they have been involved), purposively sampled according to intervention appointment attendance, area type

This document is uncontrolled				
Please refer to Priment Sopbox for current version				
HomeHealth	Version 5.0	IRAS ID: 275026	Authorisation date: 03.03.2020	Page <b>23</b> of <b>56</b>



(rural, urban), remote vs face-to-face service delivery, deprivation, ethnicity and baseline functioning. Participants will also be sampled for maximum diversity according to age, gender and sexuality, choice of goal type and recruited earlier/later in the study. Separate consent will be sought for participating in an interview. Key stakeholders, including service providers, managers and supervisors (up to approximately 15) will also be recruited for interviews about experiences of delivering the service and implementation of the service..

### Study Within a Project

For the additional study within a project focussing on MLTCs and MCI, we will use qualitative data collected as part of the process evaluation above where relevant to MLTCs and MCI. We will also recruit around 25 further study participants to be interviewed, purposively sampled on presence of multiple long term conditions (including physical conditions, dementia, depression and anxiety) and mild cognitive impairment, in addition to the maximum diversity criteria above.

Participant recruitment at a NHS site will only commence when the trial has:

1. Been confirmed by the Sponsor (or its delegated representative) by providing green light, and
2. Been issued an 'NHS permission letter'.

## **9.3 INFORMED CONSENT PROCEDURE**

It is the responsibility of the Investigator, or a person delegated by the Investigator to obtain written informed consent from each participant prior to participation in the trial, following adequate explanation of the aims, methods, anticipated benefits and potential hazards of the trial.

The responsibility for seeking informed consent will be delegated by the CI/PI to Research Associates based at each site, as will be indicated on the Staff Signature and Delegation of Tasks. We will not include any participants who we believe lack capacity to decide whether or not to take part in the study. Those participants who agree to take part will have their capacity assessed before written informed consent is obtained. This assessment will be carried out by the Investigator or persons delegated by the Investigator, who will all be trained to assess capacity. If the person has capacity they will then be given a consent form to sign. If the person no longer has capacity to consent to participate, they will not be invited to take part. Assessment of capacity will be documented. We will abide by the Mental Capacity Act (England and Wales) (2005) throughout. All Research Assistants will have undertaken GCP and Mental Capacity Act training and will be suitably trained and qualified to assess capacity to consent prior to seeking consent. People interested in taking part in the study will have at least 24 hours to read the Participant Information Sheet (PIS), which they will receive by post after expressing an interest, screening positively and booking a baseline assessment. Informed consent (see attached Consent Form) will be sought face-to-face at the participant's home prior to baseline assessment if possible. If this is not possible, a consent form will be completed by the person at home (with assistance from a researcher to complete if needed), either written and returned by post or completed digitally and emailed to the research team. If neither of these methods are possible audio recorded verbal consent will be sought and a transcript sent to the participant.

This document is uncontrolled				
Please refer to Priment Sopbox for current version				
HomeHealth	Version 5.0	IRAS ID: 275026	Authorisation date: 03.03.2020	Page <b>24</b> of <b>56</b>



If on paper, the participant will sign two copies of the consent form, and will retain one whilst the other will be filed in the site trial file. Prior to seeking the consent, the person will be given an explanation of the study by the Investigator or designated individual (including potential risks and benefits, that they are under no obligation to take part and can withdraw at any time without giving a reason) and the opportunity to ask any questions. A copy of the signed consent form will also be posted to their GP practice to be filed in the participant's medical notes. No clinical trial procedures will be conducted prior to the participant giving consent by signing the Consent form. Consent will not denote enrolment into trial. Some items on the consent form (including agreeing for appointments to be audio-recorded, agreeing to be approached for a process evaluation interview and agreeing to be approached for further research including 24 month follow up contact) will not be compulsory to participate in the trial. These are clearly indicated.

The PIS and consent form will be reviewed and updated if necessary throughout the trial (e.g. where new assessments are required or additional safety information becomes available) and participants will be re-consented if appropriate.

If a participant loses capacity during the trial, we will retain them in the trial if they have a personal or nominated consultee that can support them during the assessments and they consented to this at baseline. If they do not, we will withdraw them from the trial but retain their data up to that point unless otherwise requested. This is outlined in the consent form.

## 10 TRIAL PROCEDURES

### 10.1 PRE-TREATMENT ASSESSMENTS

Participants will be screened by a RA over the telephone on expressing an interest, who will ask a series of structured screening questions about symptoms of frailty and need for support with instrumental and basic activities of daily living. People who meet the criteria (Rockwood Clinical Frailty Scale score 5 Mild Frailty: reporting one or more symptoms of frailty and requiring support for one or more instrumental activities of daily living, but not receiving help for a basic activity of daily living) will be invited to a face-to-face appointment at the person's home or to take part in a virtual assessment (telephone or video conferencing) at which the researcher will seek informed consent and undertake a baseline assessment. A screening log will be used to document those screened, those excluded and reasons for exclusion.

The RA will then seek informed consent and undertake a baseline assessment, either face-to-face (if possible) or by telephone/video conferencing. If potential participants have hearing impairment, they will be asked if they would like copies of the questionnaires to be posted to them to refer to during the assessment, or to arrange it at a time when friend or relative could be there in person to support them. RAs will be trained in clear communication. The baseline assessment will consist of all instruments listed in the Schedule of Assessments in Appendix 1, including the primary and secondary outcome assessments, demographics and a number of baseline characteristics that will not be assessed as outcomes (e.g. cognition, lifestyle factors). The baseline assessment is estimated to take 50-155 minutes, which was acceptable to feasibility trial participants with minimal missing data.

This document is uncontrolled				
Please refer to Primint Sopbox for current version				
HomeHealth	Version 5.0	IRAS ID: 275026	Authorisation date: 03.03.2020	Page <b>25</b> of <b>56</b>

If it is not possible to screen the person over the phone or their frailty status remains uncertain, the RA will ask the same screening questions in person and observe their functional status (e.g. gait, use of aids) to reach a frailty categorisation. If the person screens as mildly frail then consent for participation will be sought, and if the person consents, a baseline assessment will be undertaken.

## 10.2 RANDOMISATION PROCEDURES

Randomisation will be 1:1, stratified by site, and will be carried out independently using the remote computerised web-based application Sealed Envelope, provided by Priment CTU. It will be set up, tested and validated following Priment SOPs. Participant randomisation will be undertaken by site staff if there is sufficient capacity for unblinded staff to perform this, otherwise this will be undertaken centrally by unblinded staff (e.g. administrators, process evaluation RA). Staff will enter screening details online to randomise the participants. Randomisation will be undertaken after consent has been taken and a baseline assessment completed. A Trial Participant Enrolment log will be stored securely at each site in the site file, with access restricted to the research team. If the participant is randomised to the intervention group, the site PI or administrator will inform the HomeHealth support worker delivering the intervention at the appropriate site to pass on the participant's details. The support worker will then contact the person directly to arrange a time for an initial appointment. Those randomised to the control group will be informed by another central or site member of staff who can remain unblinded. The Data Management Plan will specify which trial staff are blinded.

## 10.3 SUBSEQUENT ASSESSMENTS AND PROCEDURES

### 10.3.1 VISIT SCHEDULE AND ASSESSMENTS

A schedule of all trial assessments and procedures is set-out in Appendix 1.

#### Outcome assessments

A RA will carry out the outcome assessments at 6 months and 12 months post-randomisation, as outlined in Appendix 1 Schedule of Assessments. Outcome assessments will be carried out face-to-face, by videoconferencing or by telephone depending upon current guidance in relation to Covid-19 and the participant's preference. Self-report questionnaires (containing some of the outcome measurements) will be offered to participants to complete at home either by weblink or on paper and posted back to the research team, with telephone support from a RA if needed. If participants have hearing impairment, they will be asked if they would like copies of all questionnaires to be posted to them to refer to during the assessment, or to arrange it at a time when friend or relative could be there in person to support them. The RA will be blind to arm allocation, and will ask participants not to disclose whether they have received the HomeHealth service at the start of all contacts. Outcome assessments are estimated to take 40-150 minutes, which was acceptable to participants in our feasibility trial.

Within six months following the participant's 12 month visit, an RA will collect data from their primary care medical notes. Data will include primary and secondary healthcare usage, medications and comorbidities (see Appendix 1). If an AE or SAE is detected (e.g. an A&E attendance) during the follow up period, this will be recorded separately in the site AE log or corresponding CRF.

This document is uncontrolled				
Please refer to Priment Sopbox for current version				
HomeHealth	Version 5.0	IRAS ID: 275026	Authorisation date: 03.03.2020	Page <b>26</b> of <b>56</b>

## Process evaluation

**Intervention data:** For each client, service providers will record the following data as the intervention progresses: number of appointments attended, modality and duration, technical issues with remote delivery, reasons for non-attendance; goals set by participant (coded into mobility, psychological, social, nutrition, cognitive or other); progress towards achieving goals at each appointment; fidelity checklists after each appointment; and audio recording all intervention appointments (10% of individuals will be randomly selected and their appointments audio-files transcribed for fidelity checking).

**Evaluation interviews:** A purposive sample of approximately 20 intervention participants will also be invited to participate in an interview about their experiences. Participants are consented in the main trial consent form for further contact to be invited to participate in the process evaluation. Consent will be sought separately for this part of the study by an unblinded RA, who will not be involved in the intervention delivery. One interview will be carried out remotely or in the person's home, depending on participant preference and current Covid-19 guidance. This will explore their experiences of receiving the service, experiences of remote delivery in light of a national pandemic, their choice of goals, experiences of behaviour change, impact of physical, psychological and cognitive conditions on behaviour change and barriers and facilitators to engaging with the service.

As part of the process evaluation, key stakeholders including all service providers, managers and supervisors will be invited to participate in a face to face, video or telephone interview regarding their experiences of delivering the service, factors influencing this, training and supervision and barriers and facilitators to participant engagement and future implementation of the service.

**Study Within a Project:** As part of the process evaluation, approximately 25 additional interviews will be carried out with participants sampled on number and type of long term condition and presence of MCI. We will add additional sections to topic guides asking about the impact of health conditions and MCI on experiences of the service and behaviour change. Participants will be consented by an unblinded RA following the same procedure as for other process evaluation interview participants.

## Long term follow up

Participants will be consented to be approached for further research, including long term follow up (24 months).

## **10.4 CLINICAL PROCEDURES**

No further procedures will be carried out above those described in 10.3.1 and in Appendix 1.

## **10.5 ASSESSMENT OF TRIAL INTERVENTION COMPLIANCE**

Attendance at sessions will be documented by the HomeHealth support worker. Attending at least 3 sessions will be considered compliance with minimum dosage.

This document is uncontrolled				
Please refer to Priment Sopbox for current version				
HomeHealth	Version 5.0	IRAS ID: 275026	Authorisation date: 03.03.2020	Page <b>27</b> of <b>56</b>

## 10.6 DISCONTINUATION/WITHDRAWAL OF PARTICIPANTS

Participants may discontinue the intervention sessions or withdraw from the project. If a participant expresses their wish to withdraw from trial treatment, sites will explain the importance of remaining on trial follow-up and seek permission to contact for assessments and for use of routine follow-up data to be used for trial purposes. Although we will stress that participants can withdraw at any time without giving a reason, we shall retain any assessments that have been collected to that point and we shall maintain contact unless told otherwise. Service use data and routine data such as mortality from medical notes will also be collected for the duration of the trial, unless the participant specifically requests these not be collected, as outlined in the information sheet and consent form. If the participant becomes acutely unwell, they will be contacted at a later date to see if they wish to continue participation. Participants will be consented at baseline to opt to continue with the study if they lose capacity during the study period and they have a personal/nominated consultee to support them in ongoing participation and completion of outcome measures. If a person who had capacity at the start of the study loses capacity and a personal/nominated consultee is not identified they will be excluded from the study.

Withdrawal will be recorded explicitly in the CRF and a copy of this will be sent to the participating practice to file in their medical notes. The participant may withhold their reason for withdrawal however, if the participant gives a reason for their withdrawal, this should be recorded. Participant mortality and cause of death will be recorded as a study endpoint in the CRF. If a participant moves to a care home they will be retained in the trial and undertake outcome assessments unless they choose to withdraw.

### Loss to follow-up

If a participant moves from the area, every effort will be made for the participant to be followed up, either by that site or at another participating trial site (if a new site they will take over the responsibility for the participant). If a participant is lost to follow-up at a site every effort will be made to contact the participant's GP to obtain information on the participant's status.

## 10.7 REPLACEMENTS

Withdrawn participants will not be replaced.

## 10.8 STOPPING RULES

The trial may be stopped before completion for the following reasons:

- On the recommendation of the TSC
- On the recommendation of the Sponsor and CI

## 10.9 DEFINITION OF END OF TRIAL

The expected duration of the trial is 2.5 years from recruitment of the first participant.

This document is uncontrolled				
Please refer to Priment Sopbox for current version				
HomeHealth	Version 5.0	IRAS ID: 275026	Authorisation date: 03.03.2020	Page 28 of 56

The end of trial is the date of the last home visit of the last participant.

The end of the process evaluation will be the final interview with any stakeholder (participant, service provider etc).

## 11 RECORDING AND REPORTING OF ADVERSE EVENTS AND REACTIONS

Collection, recording and reporting of adverse events (including serious and non-serious events and reactions) to the Sponsor will be completed according to Priment pharmacovigilance SOPs.

### 11.1 DEFINITIONS for AE

Term	Definition
Adverse Event (AE)	Any untoward medical occurrence in a participant administered a treatment/intervention and which does not necessarily have a causal relationship with the treatment/intervention. <i>Therefore an AE can be any unfavourable or unintended change in the structure (signs), function (symptoms) or chemistry (laboratory data) in a participant to whom a procedural intervention has been administered, including occurrences which are not necessarily caused by or related to that intervention.</i>
Serious Adverse Event (SAE), Serious Adverse Reaction (SAR) or Unexpected Serious Adverse Reaction	Any adverse event that: <ol style="list-style-type: none"> <li>1. results in death,</li> <li>2. is life-threatening*,</li> <li>3. requires hospitalisation or prolongation of existing hospitalisation**,</li> <li>4. results in persistent or significant disability or incapacity, or consists of a congenital anomaly or birth defect</li> </ol>
Serious Adverse Reaction	Any SAE that is <ol style="list-style-type: none"> <li>1. Related to the trial intervention</li> </ol> AND <ol style="list-style-type: none"> <li>2. Expected (listed in the protocol as an expected side effect of the intervention)</li> </ol>
<p>*A life- threatening event, this refers to an event in which the participant was at risk of death at the time of the event; it does not refer to an event which hypothetically might have caused death if it were more severe.</p> <p>** Hospitalisation is defined as an inpatient admission, regardless of length of stay. <b>Hospitalisation for pre-existing conditions, including elective procedures do not constitute an SAE.</b></p>	
Suspected Unexpected Serious	Any SAE that is deemed to be <ol style="list-style-type: none"> <li>1. Related to the trial intervention</li> </ol> AND

This document is uncontrolled				
Please refer to Priment Sopbox for current version				
HomeHealth	Version 5.0	IRAS ID: 275026	Authorisation date: 03.03.2020	Page <b>29</b> of <b>56</b>

Adverse Reaction (SUSAR)	2. Unexpected (not listed in the protocol as an expected side effect of the intervention)
Important Medical Event	These events may jeopardise the participant or may require an intervention to prevent one of the above characteristics/consequences. Such events should also be considered 'serious'.

## 11.2 RECORDING ADVERSE EVENTS

All adverse events will be recorded by RAs in the source documents from randomisation intervention until the participant completes the trial. Participants will be asked open-ended questions at each outcome assessment regarding whether they have experienced any adverse events, and will also be asked to contact the research team if they experience an adverse event throughout the trial. If an AE is detected by a HomeHealth support worker, they will document this on a CRF and send to the research team. Adverse events such as hospitalisations will also be documented if recorded as part of service use on the CSRI. Adverse events will be recorded at site with clinical symptoms and accompanied with a simple, brief description of the event, including dates as appropriate. Serious adverse events will be recorded in the CRF.

## 11.3 EXPECTED SIDE EFFECTS

This is a low risk intervention and we envision few side effects, although it is possible that the following adverse events may occur due to the intervention:

- Falls may occur in this population, both related (e.g. during exercises, during social visits encouraged through the intervention) and unrelated to the intervention. All falls will be followed up and documented with details and relatedness to the intervention will be assessed by the site PI or Clinical Safety Lead.
- Delayed appropriate care (e.g. if the support worker misses a red flag symptom)
- Other mild adverse events, e.g. increasing exercise may cause increased pain or fatigue, or participants may become distressed from not meeting behaviour change goals or discussing sensitive issues.

As this is a population who are mildly frail, the following are expected to occur but are unlikely to be related to the intervention:

- Falls (when assessed as unrelated to the intervention)
- Illness or severe illness requiring hospitalisation
- Medical conditions that are common in this population (e.g. cardiovascular disease, type 2 diabetes) or existing comorbidities, and acute events occurring as a result of these
- Death

This document is uncontrolled				
Please refer to Priment Sopbox for current version				
HomeHealth	Version 5.0	IRAS ID: 275026	Authorisation date: 03.03.2020	Page <b>30</b> of <b>56</b>

- Loss of capacity or decline in cognition
- Worsening physical functioning

SAEs which fall into these categories and so are assessed as unrelated to the intervention will not be reported to the Sponsor.

#### 11.4 ASSESSMENTS OF SERIOUS ADVERSE EVENTS

Each adverse event will be assessed by either the CI, site PI or other designated individual to determine severity.

#### 11.5 RELATED EVENTS

Each serious adverse event will be assessed by either the CI, site PI or other designated individual to determine if the event is related to the intervention and if the event is expected. Further guidance operationalising the criteria in this protocol with regards to relatedness, expectedness and severity can be found in the **HomeHealth Pharmacovigilance Plan**. The assessment of the relationship between adverse events and the administration of the intervention is a decision based on all available information at the time of the completion of the case report forms (CRFs). If the event is a result of the administration of any of the research procedures then it will be classed as related.

#### 11.6 EXPECTED EVENTS

If the event has been listed in the protocol (section 11.3) as an expected side effect of the intervention or expected within a mildly frail population then the event will be classed as expected. If the event is not listed then it will be classed as unexpected.

#### 11.7 PROCEDURES FOR RECORDING AND REPORTING SERIOUS ADVERSE EVENTS AND SUSPECTED UNEXPECTED SERIOUS ADVERSE EVENTS

All serious adverse events will be recorded in the CRF and the GP will be notified of self-reported SAEs to record in the electronic medical records. All SAEs (except those specified in section 11.3 as not requiring reporting to the Sponsor), must be recorded on a serious adverse event (SAE) form. The CI/PI or designated individual will review and assess causality and severity. The form will be preferably emailed to [primentsafety@ucl.ac.uk](mailto:primentsafety@ucl.ac.uk) within 24 hours of his / her becoming aware of the event, with the Sponsor informed within 5 working days. The Chief or Principal Investigator will respond to any SAE queries raised by the sponsor as soon as possible. All SAEs will be recorded from when the participant is randomised until the date of their final outcome assessment.

The RA or intervention provider who detects a serious adverse event will complete the Serious Adverse Event CRF and send it to the site PI/or delegated individual for review and assessment of causality and severity. Participants will be followed up if necessary for SAEs related to the intervention and follow up forms will be clearly marked and emailed to Priment as more information becomes available. SUSARs will be reported to the Sponsor within 24 working hours of the CI or delegated individual becoming aware of

This document is uncontrolled				
Please refer to Priment Sopbox for current version				
HomeHealth	Version 5.0	IRAS ID: 275026	Authorisation date: 03.03.2020	Page <b>31</b> of <b>56</b>

the event. Site PIs will be informed of any updates on safety through email. The trial is single blind (outcome assessors only) so no unblinding measures will be required.

Where the event is unexpected and thought to be related to the intervention, it is a SUSAR and this must be reported by the Investigator to the Health Research Authority within 15 days. SUSARs that are fatal or life-threatening must be notified to REC within 7 days after the Chief Investigator has learned of them.

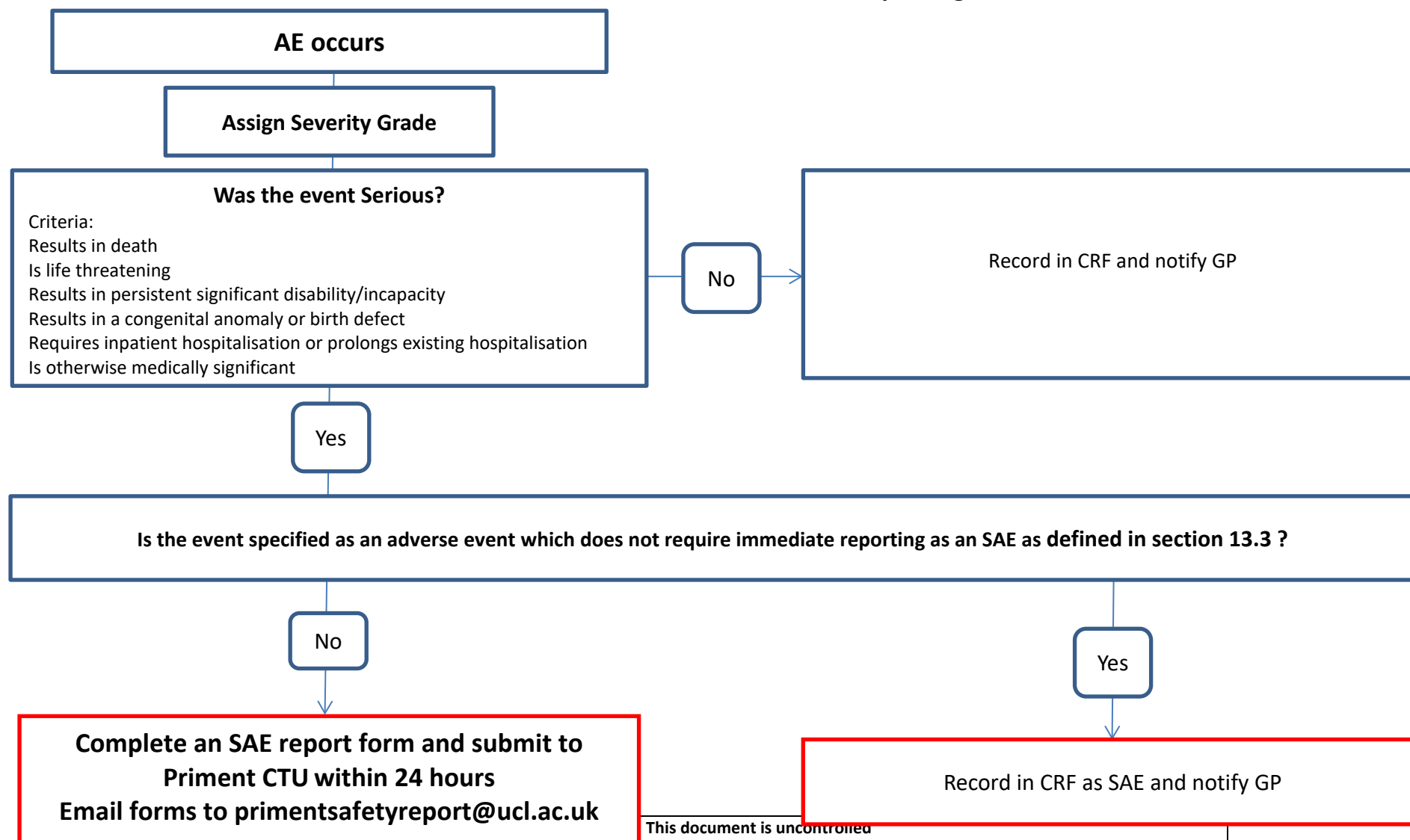
Completed SAE forms (for those related to the intervention) must be sent within 24 hours of becoming aware of the event to Priment CTU  
Email forms to [primentsafetyreport@ucl.ac.uk](mailto:primentsafetyreport@ucl.ac.uk)

The reporting of adverse events to the ethics committee and Sponsor will be completed according to Priment non-CTIMP safety management SOP or to any other specific requirements if the Sponsor of the trial is not UCL.

This document is uncontrolled				
Please refer to Priment Sopbox for current version				
HomeHealth	Version 5.0	IRAS ID: 275026	Authorisation date: 03.03.2020	Page <b>32</b> of <b>56</b>



## Flow Chart for SAE reporting



This document is uncontrolled

Please refer to Priment Sopbox for current version

HomeHealth	Version 5.0	IRAS ID: 275026	Authorisation date: 03.03.2020	Page <b>33</b> of <b>56</b>
------------	-------------	-----------------	-----------------------------------	-----------------------------

## 11.8 NOTIFICATION OF DEATHS

Only deaths that are assessed to be related to the Intervention will be reported to the Sponsor. This report will be immediate.

## 11.9 REPORTING URGENT SAFETY MEASURES AND OTHER SAFETY EVENTS

If any urgent safety measures are taken, the CI/ PI shall immediately notify Priment of this measures, and in any event no later than 3 calendar days from the date the measures are taken. Written notification will be submitted within 3 calendar days to the relevant REC as in line with Priment SOP on Urgent Safety Measures.

## 11.10 NOTIFICATION OF SERIOUS BREACHES TO GCP AND/OR THE PROTOCOL

A “serious breach” is a breach which is likely to effect to a significant degree –

1. the safety or physical or mental integrity of the participants of the trial; or
2. the scientific value of the trial.

The Sponsor of a clinical trial shall notify the licensing authority in writing of any serious breach of –

1. the conditions and principles of GCP in connection with that trial; or
2. the protocol relating to that trial, as amended from time to time, within 7 days of becoming aware of the breach.

PRM-SOP-006 Non Compliance To Study Protocol,Regulatory Requirements and Serious breaches of GCP or trial protocol will be followed.

## 11.11 REPORTING INCIDENTS INVOLVING A MEDICAL DEVICE(S)

n/a

# 12 DATA MANAGEMENT

## 12.1 DATA COLLECTION TOOLS AND SOURCE DOCUMENT IDENTIFICATION

Baseline and outcome data will be collected from participants using electronic or paper CRFs. If paper, the paper CRF will act as the source document and data will be entered into the electronic database. If data are directly entered electronically, the electronic CRF will act as source document with a copy stored locally at site. An RA will extract and transcribe primary care medical notes source document data into the electronic CRF following the participant’s completion of the trial.

A trial specific data management plan will be created which will outline how data will be handled before, during and after the trial. It will include all aspects of data management from the creation of databases and case report forms, the collection and cleaning of data, and the extraction and lock of the trial database.

This document is uncontrolled				
Please refer to Priment Sopbox for current version				
HomeHealth	Version 5.0	IRAS ID: 275026	Authorisation date: 03.03.2020	Page <b>34</b> of <b>56</b>

It will be the responsibility of the CI to ensure the accuracy of all data entered in the CRFs. The delegation log will identify all those personnel with responsibilities for data collection, handling and entering data on the study database. All personnel will be given training on the database and randomisation system prior to including those who have access to the trial database.

## 12.2 DATA COLLECTION AND HANDLING

All data will be collected and handled in accordance with the General Data Protection Regulation and Priment Data Handling SOP. Trial specific arrangements will be detailed in the data management plan. The CRFs will not bear the participant's name or other personal identifiable data. The participant's initials and trial identification number will be used for identification and this will be clearly explained to the patient in the PIS.

Copies of consent forms and other identifiable data will be stored separately in locked filing cabinets in a secure location with limited access. Any digital identifiable data (e.g. audio recorded consent) will be stored in the UCL Data Safe Haven.

Audio data from intervention sessions and interviews will be recorded using an encrypted audio recorder. Files will be transferred between professional transcription services (TP transcription, University Transcription and/or Devon Transcription) and UCL via a secure server hosted by the transcription service. A confidentiality agreement will be put in place between the transcription service and UCL. Audio files will be anonymised and stored securely in the Data Safe Haven at UCL. Transcripts will be pseudonymised and stored in separate folders to the audio files on password-protected computers at UCL and will only be accessible to those authorised to use the files.

The patient data collected in this trial will not be transferred to any party not identified in this protocol and are not to be processed and/or transferred other than in accordance with the patients' consent.

## 12.3 TRIAL DATABASE

The CRFs will be entered into a web-based clinical data management system, Red Pill, provided by Sealed Envelope through Priment. Sealed Envelope has been assessed by Priment to ensure that adequate processes are in place and are being followed for quality management, software development and security. There will be an agreement in place between the Sponsor and Sealed Envelope to ensure compliance and agreement with clinical trial regulations and data protection laws. Priment SOPs 18 Validating Sealed Envelope Systems and 20 Change Control for Sealed Envelope Systems will be followed to set up and manage changes to the trial database. At the end of the trial, prior to analysis, Priment SOP Database Lock, Unlock and Closure will be followed.

## 12.4 DATA OWNERSHIP

At the end of the trial the data belongs to University College London.

This document is uncontrolled				
Please refer to Priment Sopbox for current version				
HomeHealth	Version 5.0	IRAS ID: 275026	Authorisation date: 03.03.2020	Page <b>35</b> of <b>56</b>

## 13 STATISTICAL CONSIDERATIONS

### 13.1 OUTCOMES

#### 13.1.1 PRIMARY OUTCOMES

The primary outcome is the Modified Barthel Index (BI) (38) at 12 months. This is a widely used, validated measure of physical functioning and ability to undertake basic Activities of Daily Living (ADLs), and a key outcome measure in frailty trials (39). The BI is an interviewer-administered continuous scale from 0-100, where 100 reflects completely independent functioning. It will be assessed at baseline, 6 months and 12 months. Telephone assessment is also valid and reliable compared to face-to-face assessment (40).

#### 13.1.2 SECONDARY OUTCOMES

Our secondary outcomes reflect other important intervention outcomes and/or potential mechanisms of effect, including:

- Instrumental ADLs (Nottingham Extended Activities of Daily Living (41-43))
- Fried Frailty Phenotype score (44) to assess for progression of frailty, including the following components:
  - Gait speed, self-reported according to Op het Vald's (2018) questionnaire (45) If possible, we will carry out face-to-face physical gait speed assessment (m/s) (46) in a subsample of trial participants to confirm the validity of the self-report measure in our population with mild frailty .
  - Grip strength, self-reported according to Op het Vald's (2018) questionnaire (45)). If possible, we will carry out face-to-face grip strength assessment using a dynamometer (kg, highest score out of three trials) (47) in a subsample of trial participants to confirm the validity of the self-report measure in our population with mild frailty .
  - Physical activity (International Physical Activity Questionnaire-Elderly (48)), quantified according to the IPAQ-E guidelines (49).
  - Exhaustion (exhaustion questions from 7-item Centre for Epidemiological Studies Depression Scale "7. I felt that everything I did was an effort," "20. I could not get going.") (44)
  - Weight loss (weight loss question from the Mini-Nutritional Assessment Short Form (50))
- Quality of life and Quality-adjusted Life Years (EQ-5D-5L (51, 52))
- Capability and Capability-adjusted Life Years (ICECAP-O (53))
- Wellbeing (Warwick-Edinburgh Mental Wellbeing Scale (WEMWBS) (54))
- Psychological distress (General Health Questionnaire-12 (55))
- Loneliness (University of California, Los Angeles 3-item Loneliness scale (56))

This document is uncontrolled				
Please refer to Priment Sopbox for current version				
HomeHealth	Version 5.0	IRAS ID: 275026	Authorisation date: 03.03.2020	Page <b>36</b> of <b>56</b>

- Cognition (Montreal Cognitive Assessment (MoCA) (57) or telephone MoCA (remote items only) (58, 59)
- Falls (using the ProFANE consensus definition(60))
- Mortality
- Carer burden (61)

**Health economic data:** Healthcare and additional services (e.g. voluntary sector and social care) utilisation will be collected using a Client Services Receipt Inventory (CSRI) at 0, 6 and 12 months, modified for the population in our feasibility study to include the range of services they may use (e.g. podiatry, hearing aids, dental care, physiotherapy, exercise classes, day care etc). We will additionally ask about unpaid and paid (state and out-of-pocket) carer time for specific activities of daily living, using an adapted iMTA Valuation of Informal Care Questionnaire (iVICQ) (61). This will be costed as the cost of face to face care worker time if funded by a LA to reflect the fact that if this care were to be reduced it is likely to be unpaid carers that would need to take over this caring role, and vice versa.

Healthcare resource use (contacts, hospitalisations, medications, etc) will be additionally extracted from patient medical records. Resource use will be costed using nationally published sources ((PSSRU(62), NHS Reference Costs (63) and BNF (64)). The cost of the intervention including staff training, administration, supervision and delivery will be included in the costs of the intervention group.

**Process evaluation:** Qualitative and fidelity process evaluation data will be collected by an independent RA or after the last outcome assessment has been completed, to avoid unblinding of outcome assessments. For efficiency, the process evaluation will begin alongside the main trial, although feedback will not be given to service providers or other team members until trial completion. The following data will be collected:

*Qualitative Interviews:* We will conduct audio-recorded semi-structured qualitative interviews with participants receiving the service, service providers and other stakeholders, based on topic guides developed with public and patient involvement and engagement (PPIE) representatives and key stakeholders. We will explore the impact of remotely delivering the intervention in the time of Covid-19 and its impact upon participant and provider experiences.

*Trial process data:* Service providers will record the following data for each client:

- Number of appointments attended, modality, technical issues experienced if delivering remotely, duration, reasons for non-attendance.
- Goals set by participant (coded into mobility, psychological, social, cognitive, nutrition or other)
- Progress towards achieving goals, through provider ratings. Providers will rate progress towards outcome goals at the end of the study using goal attainment scaling on a scale of -2 (much less than expected progress) to +2 (much more than expected progress) (65) and progress towards SMART goals at each appointment using a 0 (not achieved) to 2 (fully achieved or exceeded) as in the feasibility study.

This document is uncontrolled				
Please refer to Priment Sopbox for current version				
HomeHealth	Version 5.0	IRAS ID: 275026	Authorisation date: 03.03.2020	Page <b>37</b> of <b>56</b>

- d. Fidelity (behaviour change technique (BCT)) checklists after each appointment (based on those used in the feasibility trial)
- e. Audio recording all intervention appointments. 10% of individuals will be randomly selected and their appointments audio-files transcribed for fidelity checking.

*Trial data:* The process evaluation will utilise trial data, including demographic data to assess reach and outcome data (gait speed, weight, depressive symptoms, functioning) to explore mechanisms of impact.

**Study Within a Project:** For a separate qualitative analysis for the Study Within a Project, we will collect and additional interviews and explore the impact of multiple long term conditions and mild cognitive impairment on behaviour change and engagement with HomeHealth with all participants for whom the topic is relevant. For the quantitative analyses, trial data on number and type of long term conditions and MoCA scores will be used to assess the impact on outcome data and progress towards goals

## 13.2 SAMPLE SIZE AND RECRUITMENT

### 13.2.1 SAMPLE SIZE CALCULATION

We have calculated the sample size using the Minimal Clinically Important Difference (MCID) for the Modified Barthel Index (BI) at 12 months (1.85) (66). We anticipate average functioning to decline over time without intervention in those with mild frailty; in our feasibility study scores declined by >1 point in 6 months in the control arm, and improved in our intervention arm (36). If this decline is prevented, we would therefore expect a larger difference at 12 months than observed at 6 months in our feasibility study. The standard deviation (SD) was 3 for the BI in our feasibility RCT. This has been reported in other studies (27), but larger SDs have been reported in other settings in frail populations (28, 31). We have therefore conservatively assumed an SD of 5 for our full trial, which would require 308 people (154 per group), with 90% power and 5% significance level. Whilst attrition was minimal (6%) at 6 months in our feasibility study, other studies have had higher attrition rates with longer follow-up(15).

We anticipate that clustering by therapist will be minimal and non-significant. No trials in those with mild frailty have reported therapist clustering (intraclass correlation coefficients (ICCs)), only clustering by GP practice in cluster RCTs in older community-based general populations (67). Unpublished data from a PhD studying therapist effects in a secondary analysis of a cluster exercise trial in older people (68) suggested no significant clustering by therapist (ICC 0.01,  $P=0.54$ ), so we have not inflated for therapist clustering.

Based on these estimates, a sample size of 386 people (193 per arm) is required to provide 90% power at the 5% significance level to detect an MCID of 1.85-points in the BI, assuming a 20% attrition rate at 12 months. If there are existing participants who could be enrolled beyond the target sample size without further resource implications (e.g. already expressed an interest so not requiring further practice mailouts, sufficient HomeHealth worker availability to deliver the service), we will recruit these participants to further mitigate against attrition.

This document is uncontrolled				
Please refer to Priment Sopbox for current version				
HomeHealth	Version 5.0	IRAS ID: 275026	Authorisation date: 03.03.2020	Page <b>38</b> of <b>56</b>

### 13.2.2 PLANNED RECRUITMENT RATE

In our feasibility trial 33% of those we sent postal invitations to responded, and 26% of these (8% of those invited by post) were enrolled in the RCT. The majority 57/72 (79%) of those that were assessed but were not recruited were ineligible as they were 'too fit' (vulnerable or managing well), a further 5/72 (7%) were too frail and 10/72 (14%) declined. It is also anticipated that many of those who did not respond to the initial postal invitation would also be ineligible as too fit, as we requested only those with evident symptoms of mild frailty to respond. In our feasibility study one researcher recruited 20 people/month across 4 practices in 2 sites (London, Hertfordshire) once recruitment was established. There was a large potentially eligible pool of participants in each practice, and therefore in larger practices we only invited a random sample of 100-150 people from 260+ possible participants. We successfully recruited above target in less time than anticipated. Researchers based across our 3 sites could therefore recruit 386 participants over 12 months (15 per month for the first 3 months while the service is established, followed by 37-38 per month or 12-13 per site per month for the subsequent 9 months), allowing for leave, unforeseen events, and time to screen and conduct outcome assessments. Three CCGs have already agreed to participate (Camden; East and North Herts; Airedale, Wharfedale & Craven), each with a large pool of potential practices.

The first 6 months of recruitment will form our internal pilot, to further test trial recruitment procedures, with the following stop/go progression criteria at 6 months:

Progression Criteria	Red	Amber	Green
Trial recruitment	<50	≥50-99	≥100%
Recruitment rate/CCG site/ month (Set-up phase: months 0-3))	≤2	3-4	≥5
Recruitment rate/CCG site/month (Maintenance phase: months 3-6)	≤7	8-11	≥12
Number of sites opened	0-1	2	≥3
Total number of participants recruited	<80	80-159	160

We will monitor our recruitment rate/site/month very closely and act early to put in place contingency measures if levels are less than 'amber' (e.g. expand to further study sites/participant identification centres, implement more intensive community engagement).

### 13.3 STATISTICAL ANALYSIS PLAN

Priment Statistics SOP will be followed. A statistical analysis plan will be developed by the trial statistician a priori and will be reviewed and signed off by the Trial Steering Committee. All analyses will be by intention to treat. Missing data were low in the feasibility study and will not be imputed. Variables at all time points will be summarized by randomised group.

This document is uncontrolled				
Please refer to Priment Sopbox for current version				
HomeHealth	Version 5.0	IRAS ID: 275026	Authorisation date: 03.03.2020	Page <b>39</b> of <b>56</b>

### 13.3.1 SUMMARY OF BASELINE DATA AND FLOW OF PARTICIPANTS

Participants' baseline characteristics using appropriate summary statistics (mean and SD, median and interquartile range or proportions) by randomised group will be computed. A CONSORT diagram (<http://www.consort-statement.org/>) will be used to describe the flow of participants through the trial.

### 13.3.2 PRIMARY OUTCOME ANALYSIS

The primary outcome (Barthel Index (BI) score at 12 months) will be analysed using linear regression. This model will control for baseline BI score and site (the stratification variable). Assumptions will be checked and appropriate transformations or analogous models will be used if the assumptions of linear models are violated. The ICC will be reported. The primary outcome analysis will be independently verified by an appropriately experienced statistician. If any issues arise during confirmatory analyses, the two statisticians will meet to agree on a course of action, and this will be documented.

### 13.3.3 SECONDARY OUTCOME ANALYSIS

Secondary outcomes, including The Nottingham Extended Activities of Daily Living, Fried Frailty Phenotype score (components: gait speed, grip strength, physical activity (IPAQ), exhaustion, weight loss), gait speed, grip strength, IPAQ, wellbeing (WEMWBS), psychological distress (GHQ-12) and cognition (MoCA) at 6 and 12 months will be analysed using similar models to the primary outcome, controlling for outcome baseline score and site. Binary outcomes (falls, death and exhaustion) will be analysed using logistic regression. These will be reported descriptively if there are too few events to perform statistical modelling.

### 13.3.4 SENSITIVITY AND OTHER PLANNED ANALYSES

We will examine baseline predictors of missingness for the primary outcome and include any significant predictors of missingness in a supportive analysis to restore the missing at random assumption using a similar model to the primary analysis. All analyses will be complete case. There are few gains to multiple imputation in RCTs, therefore this will not be used (69, 70). We will perform a complier average causal effects (CACE) analysis after unblinding using a threshold dosage of 3+ sessions for compliance to determine the average treatment effect of participants who would have adhered to the protocol regardless of how they were randomised. Other supportive analyses will be discussed with the trial team and included in the detailed statistical analysis plan, which will be written before comparative analysis.

### 13.3.5 HEALTH ECONOMIC ANALYSIS

A health economic analysis plan will be developed by the trial health economist a priori and will be reviewed and signed off by the Trial Steering Committee within the statistical analysis plan.

We will calculate the mean incremental cost per quality adjusted life year gained (QALYs) using EQ-5D-5L and the relevant UK tariff and Years of Full Capability (YFC) using ICECAP-O and its respective tariff for

This document is uncontrolled				
Please refer to Priment Sopbox for current version				
HomeHealth	Version 5.0	IRAS ID: 275026	Authorisation date: 03.03.2020	Page <b>40</b> of <b>56</b>



the duration of the trial and report this from cost perspectives of the NHS and personal and social care services (PSS). A secondary analysis will also report the incremental cost per QALY and YFC gained from a wider cost perspective to capture the impact on carers and any patient/carer out of pocket costs for health and social care. QALYs will be calculated from the EQ-5D-5L as the area under the curve adjusting for baseline(71) with site as a fixed effect and a random effect for therapist clustering in line with the statistical analysis plan. YFC will be calculated in line with the most up to date guidance (72). Means and 95% confidence intervals will be based on bootstrapped results. The difference in total cost at 12 months will be adjusted using baseline values (73) in line with the statistical analysis plan.

We will report descriptive statistics for the EQ-5D-5L, ICECAP-O, QALYs and YFC, resource use and costs. Cost-effectiveness acceptability curves and cost-effectiveness planes will be reported from i) health and PSS cost perspective and ii) a wider cost perspective using bootstrapped results as defined above to represent the probability that the intervention is cost-effective compared to TAU for a range of values of willingness to pay for a QALY gained and YFC. Seemingly unrelated regression will be used to account for the correlation between costs and QALYs/YFC. We will conduct and report a range of sensitivity analyses for any assumptions. We will work with the statistician on handling missing data, likely to be complete case analysis adjusting for predictors of missingness.

**Budget impact analysis:** We will develop a tool for use by commissioners for them to assess the yearly costs to their budget of implementation of HomeHealth based on a range of different commissioning models. For example, if this was to be implemented in primary care this would contain NHS costs each year over 5 years and would demonstrate the cost of implementation compared to potential cost savings in primary and secondary care. As there is little long-term data for similar interventions and populations to base assumptions on effectiveness over time, we will explore alternative scenarios. This will include assuming constant effectiveness of the intervention over five years, initial further gains (in year 1-2, if care home transitions and hospital admissions are avoided) followed by a depreciation in effect, and a slow decline in effectiveness over time. We will further include the impact of assumptions about the grade of staff delivering the intervention, cost of training and the patient case load taking into account the size and composition of the relevant local population. It would also include scenarios modelling the potential cost to the NHS if aspects of the intervention were commissioned by a third sector organisation, or the impact on local authorities if this was to be commissioned as part of social care.

### 13.3.6 PROCESS EVALUATION ANALYSIS

**Qualitative data:** Interviews will be transcribed and entered into qualitative software. We will undertake a thematic analysis including searches for disconfirming evidence (36). All transcripts will be read by at least three team members, with a thematic framework developed independently and refined in team discussions (which will include PPIE members). Analysis will continue alongside data collection in order to inform future interviews. Themes will be derived inductively to explore intervention fidelity and mechanisms of impact in relation to contextual factors. We will explore how and why participants choose certain goals, their experiences of remote delivery in the context of a national pandemic and

This document is uncontrolled				
Please refer to Primient Sopbox for current version				
HomeHealth	Version 5.0	IRAS ID: 275026	Authorisation date: 03.03.2020	Page <b>41</b> of <b>56</b>

how these might impact upon outcomes. Data from providers and stakeholders will be mapped against constructs from Normalisation Process Theory (NPT) (74) to identify facilitators and barriers to implementation within newly evolving integrated care systems. Interpretations will be agreed in multi-disciplinary team discussions (qualitative sub-group, including PPIE members) with a particular focus on how contextual factors such as Covid-19, rurality, age, gender, ethnicity, sexuality, socio-economic status, health literacy, degree of impairment, co-morbidities and provider differences might influence service delivery, fidelity, impact and implementation.

*Quantitative data:* Trial process and outcome data will be used to assess intervention reach, fidelity and dose and explore mechanisms of impact. The statistical analyses will be conducted once the main trial outcomes have been completed and the statistician has been unblinded.

- 1) *Reach:* Demographic data will be compared descriptively to Office of National Statistics area level census data (75), and CCG/LA (Joint Strategic Needs Assessment, JSNA) and practice-level data where available to determine whether any populations are under-represented in those recruited to the trial and receiving the intervention. We will compare percentage recruited from typically underserved older populations (e.g. BME groups, low socioeconomic status, oldest age groups, those living alone) to data in each area. We will also explore differences in engagement with the intervention (goal progress, receiving a minimum dose and use of remote intervention delivery) according to these populations.
- 2) *Fidelity:* Two independent researchers will apply fidelity checklists (for core BCTs delivered, based on those used in our feasibility trial) to transcribed audio-recordings of intervention appointments for 10% of intervention participants (n=18). Inter-rater agreement will be calculated using kappa statistics and disagreements will be resolved through discussion. Researcher ratings will be compared to service provider ratings using appointment fidelity checklists.
- 3) *Dose:* Descriptive statistics will be calculated for: Number and percentage of appointments attended, average duration, number and percentage attending the minimum dose of appointments ( $\geq 3$ ) to the intervention overall and per area/service provider.
- 4) *Mechanisms of impact:* Types of goals set (mobility, nutrition, psychological, social, cognitive, other) will be summarised across all intervention arm participants and by key socio-demographic characteristics. Mean service provider rated goal attainment scale score will be calculated using established methods (65) overall and by goal type and key socio-demographic characteristics.

We will carry out three statistical analyses to explore hypothesised mechanisms:

- i. To determine whether those who get a 'therapeutic dose' of the intervention (defined as attending  $\geq 3$  appointments) have higher BI scores than those who do not, number of sessions attended will be dichotomised into those attending  $\geq 3$  sessions or not. Those in the TAU group will be coded  $< 3$  sessions. This will be analysed using linear regression with an interaction between sessions attended and randomised group, and baseline BI score.
- ii. We will assess whether choice of goal (mobility, psychological, social, cognitive, nutrition or other) is associated with differential effects on BI scores. Similar analyses will be conducted as in i) above; this time with an interaction between goal (mobility yes/no), nutrition (yes/no) and social network/psychological wellbeing (yes/no) and randomised group. Modelling will be undertaken

This document is uncontrolled				
Please refer to Primint Sopbox for current version				
HomeHealth	Version 5.0	IRAS ID: 275026	Authorisation date: 03.03.2020	Page <b>42</b> of <b>56</b>

separately for each goal. Additionally, if there are sufficient numbers for each goal type, we will explore if there are effects on the most related secondary outcome to assess if specific behavioural targets show more potential for effectiveness (using an interaction term as previously described). This will include mobility (gait speed and IPAQ score), nutrition (weight) and psychosocial (psychological distress and loneliness).

- iii. As goal setting is a key component of the HomeHealth service, we will explore whether overall progress towards meeting goals (quantified using goal attainment scaling) is associated with greater impact on ADL functioning (BI). We will model the BI with an interaction between randomised group and mean progress towards goals. In the TAU group, this will be set at 0 as there were no goals set, so no progress will be made.

*Study Within a Project analysis:* For the qualitative analysis, we will carry out separate thematic analyses following processes outlined above focussing on how MLTCs and MCI affects participants' engagement with the overall service, goal setting and behaviour change, using relevant data from all process evaluation participants. For quantitative analyses, we will descriptively summarise types of goals set, progress towards goals, appointment attendance and mode of delivery in those who have received the intervention, according to the following groups:

- a) People with 0-1, 2-3 and 4+ LTCs,
- b) In those with 2+ LTCs, comparing: physical conditions only,  $\geq 1$  physical conditions +  $\geq 1$  mental health condition, and  $\geq 1$  physical condition + dementia.
- c) Normal cognition, MCI, and possible dementia according to MoCA score

We will explore the impact of MLTCs on BI scores, NEADL scores and GHQ-12 scores. We will use data from both intervention and control groups to undertake regression modelling using number of MLTCs as a continuous variable and if sufficient power, then we will also analyse by MLTC cluster type as specified above. We will also conduct exploratory analyses to see if there may be an interaction between number of MLTCs and randomised group. MCI analyses will follow similar approaches as above with BI scores as the outcome.

### 13.4 INTERIM ANALYSIS

This trial is low risk and therefore an interim analysis will not be undertaken. An internal pilot (see section 13.2.2) will be used to test recruitment rates.

### 13.5 OTHER STATISTICAL CONSIDERATIONS

Priment Statistics SOP will be followed. Any alterations to the Statistical Analysis Plan will be documented with the appropriate version control. Changes made after database lock will be clearly identified as post hoc in reports and publications in which they are included, with their rationale outlined.

This document is uncontrolled				
Please refer to Priment Sopbox for current version				
HomeHealth	Version 5.0	IRAS ID: 275026	Authorisation date: 03.03.2020	Page <b>43</b> of <b>56</b>

## 14 RECORD KEEPING AND ARCHIVING

At the end of the trial, all essential documentation will be archived securely by the CI and trial sites for a minimum of 5 years from the declaration of end of trial.

Essential documents are those which enable both the conduct of the trial and the quality of the data produced to be evaluated and show whether the site complied with the principles of Good Clinical Practice and all applicable regulatory requirements.

The Sponsor will notify sites when trial documentation can be archived. All archived documents must continue to be available for inspection by appropriate authorities upon request.

## 15 OVERSIGHT COMMITTEES

The HomeHealth RCT will have a Trial Management Group (TMG), a Trial Steering Group (TSC), a Data Safety and Monitoring Board and an Implementation group.

### 15.1 TRIAL MANAGEMENT GROUP (TMG)

The TMG will include the CI, co-applicants (including site PIs), Trial Manager, Trial Co-ordinator, Priment Operations manager, statistician and/or health economist. The TMG will meet monthly (face to face or by teleconference) throughout the study to oversee the day-to-day study progress. Other members will also join the core team meetings as needed for relevant components of the study. The TMG will review recruitment figures, SAEs and substantial amendments to the protocol prior to submission to the REC. A TMG charter will be in place to detail arrangements and frequency of meetings.

### 15.2 TRIAL STEERING COMMITTEE (TSC)

There will be an Independent Trial Steering Committee (TSC) as per NIHR guidelines including an independent Chair, at least two further trials experts, an independent statistician and PPIE members. The TSC will meet 6 monthly throughout the trial to provide guidance and oversight of the study progression. The role of the TSC is to provide overall supervision of the trial. The TSC will review the recommendations of the (Independent) Data Monitoring Committee (if applicable) and, on consideration of this information, recommend any appropriate amendments/actions for the trial as necessary. The TSC acts on behalf of the funder(s) and Sponsor. The terms of reference for this group will follow the NIHR standard terms of reference for TSCs. A TSC charter will be in place to detail arrangements and frequency of meetings.

### 15.3 DATA SAFETY AND MONITORING BOARD

A Data Monitoring and Ethics Committee will be set up for this study. They will meet at least annually. The role of the DMEC is to provide independent advice on data and safety aspects of the trial. Meetings of the Committee will be held at least annually to review trial progress, or as necessary to address any issues. The DMEC is advisory to the TSC and can recommend premature closure of the trial to the TSC.

The DMEC terms of reference will detail arrangements on timing, reviews and board members.

This document is uncontrolled				
Please refer to Priment Sopbox for current version				
HomeHealth	Version 5.0	IRAS ID: 275026	Authorisation date: 03.03.2020	Page <b>44</b> of <b>56</b>

## 15.4 IMPLEMENTATION GROUP

The trial staff will establish an Implementation group. The Implementation group will meet twice in the first year, once in year 2 and twice in year 3 to consider and support implementation plans. This will be attended by the CI, Clinical Safety Monitoring Lead and the Trial Manager. It will consist of representatives from policy, commissioning (CCGs or Local Authorities), practice, the voluntary sector and three Patient and Public Involvement and Engagement (PPIE) members.

## 16 DIRECT ACCESS TO SOURCE DATA/DOCUMENTS

The investigator(s)/ institution(s) will permit trial-related monitoring, audits, REC review, and regulatory inspection(s), providing direct access to source data/documents. Trial participants are informed of this during the informed consent discussion. Participants will consent to provide access to their medical/case notes/source documents.

## 17 ETHICS AND REGULATORY REQUIREMENTS

Priment will ensure that the trial protocol, participant information sheet, consent form, GP letter and submitted supporting documents have been approved by the HRA and an appropriate research ethics committee, prior to any participant recruitment. The protocol, all other supporting documents including and agreed amendments, will be documented and submitted for ethical and regulatory approval as required. Amendments will not be implemented prior to receipt of the required approval(s).

Before any site can enrol participants into the trial, the CI/PI or designee will apply for local confirmation of capacity and capability. It is the responsibility of the CI/PI or designee at each site to ensure that all subsequent amendments gain the necessary approvals. This does not affect the individual clinician's responsibility to take immediate action if thought necessary to protect the health and interest of individual patients (see section for reporting urgent safety measures).

Within 90 days after the end of the trial, the CI/Priment will ensure that the main REC are notified that the trial has finished. If the trial is terminated prematurely, those reports will be made within 15 days after the end of the trial.

The CI will supply Priment with a summary report of the clinical trial, which will then be submitted to the main REC within 1 year after the end of the trial.

An annual progress report (APR) will be submitted to the REC within 30 days of the anniversary date on which the favourable opinion was given, and annually until the trial is declared ended. The CI will prepare the APR.

The CI will supply the Sponsor with a report of the clinical trial and a copy of the report will be submitted to the main REC, within 1 year after the end of the trial.

This document is uncontrolled				
Please refer to Priment Sopbox for current version				
HomeHealth	Version 5.0	IRAS ID: 275026	Authorisation date: 03.03.2020	Page <b>45</b> of <b>56</b>

## 17.1 PATIENT AND PUBLIC INVOLVEMENT (PPIE)

Three PPIE representatives (Jane Hopkins, Rekha Elaswarapu and Maggie Kirby Barr) contributed to the proposal and will be closely involved throughout all aspects of the study. They will assist in developing recruitment materials, identifying appropriate non-NHS channels for recruitment (e.g. local community groups), provide ongoing monitoring from a PPI perspective, provide input on topic guides for the process evaluation, sit on the Implementation Group and provide input on methods of dissemination. One PPIE member (JH) will be the PPIE lead and was a co-applicant on the grant. She will provide expert input to the TMG, advise the team on PPIE aspects, support PPIE members and contribute to the process evaluation qualitative sub-group. Three further independent PPI representatives will be recruited for the Trial Steering Group. Further PPI members will be recruited for the multiple long term conditions and MCI analyses. If PPI members are unable to continue their involvement in the trial (e.g. due to illness), we will recruit further members.

## 18 MONITORING REQUIREMENTS FOR THE TRIAL

The Sponsor will determine the appropriate level and nature of monitoring required for the trial. Risk will be assessed on an ongoing basis and adjustments made accordingly.

The degree of monitoring will be proportionate to the objective, purpose, phase, design, size, complexity, blinding, endpoints and risks associated with the trial.

A trial specific oversight and monitoring plan will be established for studies. The trial will be monitored in accordance with the agreed plan.

## 19 FINANCE

This RCT has been funded by the NIHR Health Technology Assessment (NIHR128334). The views expressed are those of the author(s) and not necessarily those of the NIHR or the Department of Health and Social Care.

Professor Claire Goodman is a NIHR Senior Investigator. Professor Dawn Skelton is a Director of Later Life Training Ltd, a not for profit Company that delivers training to health and fitness professionals working in exercise with older people. This includes training in the Otago Exercises (which form part of the exercise intervention in HomeHealth). All other co-applicants declare no conflict of interest.

## 20 INSURANCE

University College London holds insurance against claims from participants for injury caused by their participation in the clinical trial. Participants may be able to claim compensation if they can prove that UCL has been negligent. However, as this trial is being carried out in an NHS organisation or an organisation contracted to the NHS, the NHS organisation or organisation contracted to the NHS continues to have a duty of care to the participant of the trial. University College London does not accept liability

This document is uncontrolled				
Please refer to Priment Sopbox for current version				
HomeHealth	Version 5.0	IRAS ID: 275026	Authorisation date: 03.03.2020	Page <b>46</b> of <b>56</b>

for any breach in the NHS organisation's duty of care, or any negligence on the part of NHS organisation employees. This applies whether the organisation is an NHS Trust or otherwise.

Participants may also be able to claim compensation for injury caused by participation in this clinical trial without the need to prove negligence on the part of University College London or another party. Participants who sustain injury and wish to make a claim for compensation should do so in writing in the first instance to the CI, who will pass the claim to the Sponsor's Insurers, via the Sponsor's office.

NHS organisations or organisations contracted to the NHS selected to participate in this clinical trial shall provide clinical negligence insurance cover for harm caused by their employees and a copy of the relevant insurance policy or summary shall be provided to University College London, upon request.

## 21 PUBLICATION POLICY

We will disseminate our findings in peer reviewed journals and at international conferences. We will present findings in appropriate local forums for health and social care professionals; participants who have indicated they are interested in the results will be sent a summary of the findings. All NIHR-funded primary research studies are required to register in an appropriate registry. The NIHR's registry of choice is the International Standard Randomised Controlled Trial Number Register (ISRCTN). Registry information on ISRCTN will be updated regularly as appropriate and in line with instructions from the relevant NIHR secretariat/monitoring team and ISRCTN. The results of the trial will be disseminated on ISRCTN in line with NIHR transparency policy.

UCL publication policy is as follows:

All co-applicants will be listed on the main study papers. Authorship for any supplementary paper or conference abstract will be agreed by completion of the first draft. To be considered for publication it will be expected that authors have contributed to each of the following:

- a. Conception and design of the study, or acquisition of data, or analysis and interpretation of data;
- b. Drafting the article or revising it critically for important intellectual content;
- c. Final approval of the version submitted.

The study co-applicants have all contributed to the conception and design of the study, thereby meeting criteria (a). Within the Trial Management Group we will discuss the most useful ways in which to disseminate our findings.

All conference posters and presentations will acknowledge the National Institute for Health Research (NIHR) Health Technology Assessment as the funder. We will follow NIHR HTA guidance on branding and notification of publications.

This document is uncontrolled				
Please refer to Primet Sopbox for current version				
HomeHealth	Version 5.0	IRAS ID: 275026	Authorisation date: 03.03.2020	Page 47 of 56



## 22 DATA SHARING POLICY

The datasets generated and/or analysed during the current study during this study will be included in the subsequent results publication. Access to the quantitative datasets generated and/or analysed during the current study will be included in the subsequent results publication, where they can be sufficiently de-identified for data-sharing and conform to ethics and data governance requirements. The primary qualitative data will not be shared as it is not possible to de-identify this data sufficiently and retain the integrity of the data.

## 23 REFERENCES

1. Clegg A, Young J, Iliffe S, Rikkert MO, Rockwood K. Frailty in elderly people. *The lancet*. 2013;381(9868):752-62.
2. Vermeiren S, Vella-Azzopardi R, Beckwée D, Habbig A-K, Scafoglieri A, Jansen B, et al. Frailty and the Prediction of Negative Health Outcomes: A Meta-Analysis. *Journal of the American Medical Directors Association*. 2016;17(12):1163.e1-.e17.
3. Kojima G, Iliffe S, Jivraj S, Walters K. Association between frailty and quality of life among community-dwelling older people: a systematic review and meta-analysis. *J Epidemiol Community Health*. 2016;70(7):716-21.
4. Kojima G, Taniguchi Y, Iliffe S, Walters K. Frailty as a predictor of Alzheimer disease, vascular dementia, and all dementia among community-dwelling older people: a systematic review and meta-analysis. *Journal of the American Medical Directors Association*. 2016;17(10):881-8.
5. Bock J-O, König H-H, Brenner H, Haefeli WE, Quinzler R, Matschinger H, et al. Associations of frailty with health care costs—results of the ESTHER cohort study. *BMC health services research*. 2016;16(1):128.
6. Science GO. Future of an Ageing Population. London, Government Office2016.
7. Collard RM, Boter H, Schoevers RA, Voshaar RCO. Prevalence of frailty in community-dwelling older persons: a systematic review. *Journal of the American Geriatrics Society*. 2012;60(8):1487-92.
8. Gale CR, Cooper C, Aihie Sayer A. Prevalence of frailty and disability: findings from the English Longitudinal Study of Ageing. *Age and ageing*. 2014;44(1):162-5.
9. Rockwood K, Song X, MacKnight C, Bergman H, Hogan DB, McDowell I, et al. A global clinical measure of fitness and frailty in elderly people. *Canadian Medical Association Journal*. 2005;173(5):489-95.
10. Lang P-O, Michel J-P, Zekry D. Frailty syndrome: a transitional state in a dynamic process. *Gerontology*. 2009;55(5):539-49.
11. Makizako H, Shimada H, Doi T, Tsutsumimoto K, Suzuki T. Impact of physical frailty on disability in community-dwelling older adults: a prospective cohort study. *BMJ open*. 2015;5(9):e008462.
12. Rockwood K, Howlett SE, MacKnight C, Beattie BL, Bergman H, Hébert R, et al. Prevalence, attributes, and outcomes of fitness and frailty in community-dwelling older adults: report from the Canadian study of health and aging. *The Journals of Gerontology Series A: Biological Sciences and Medical Sciences*. 2004;59(12):1310-7.
13. Kojima G, Taniguchi Y, Iliffe S, Jivraj S, Walters K. Transitions between frailty states among community-dwelling older people: a systematic review and meta-analysis. *Ageing research reviews*. 2019.
14. Van der Elst M, Schoenmakers B, Duppen D, Lambotte D, Fret B, Vaes B, et al. Interventions for frail community-dwelling older adults have no significant effect on adverse outcomes: a systematic review and meta-analysis. *BMC geriatrics*. 2018;18(1):249.
15. Puts MTE, Toubasi S, Andrew MK, Ashe MC, Ploeg J, Atkinson E, et al. Interventions to prevent or reduce the level of frailty in community-dwelling older adults: a scoping review of the literature and international policies. *Age and ageing*. 2017;46(3):383-92.

This document is uncontrolled				
Please refer to Primint Sopbox for current version				
HomeHealth	Version 5.0	IRAS ID: 275026	Authorisation date: 03.03.2020	Page 48 of 56



16. Gill TM, Gahbauer EA, Allore HG, Han L. Transitions between frailty states among community-living older persons. *Archives of internal medicine*. 2006;166(4):418-23.
17. Stuck AE, Egger M, Hammer A, Minder CE, Beck JC. Home visits to prevent nursing home admission and functional decline in elderly people: systematic review and meta-regression analysis. *Jama*. 2002;287(8):1022-8.
18. Faber MJ, Bosscher RJ, Paw MJCA, van Wieringen PC. Effects of exercise programs on falls and mobility in frail and pre-frail older adults: a multicenter randomized controlled trial. *Archives of physical medicine and rehabilitation*. 2006;87(7):885-96.
19. Fries JF, Bruce B, Chakravarty E. Compression of morbidity 1980–2011: a focused review of paradigms and progress. *Journal of aging research*. 2011;2011.
20. Liimatta H, Lampela P, Laitinen-Parkkonen P, Pitkala K. Effects of preventive home visits on older people's use and costs of health care services: A systematic review. *European Geriatric Medicine*. 2016;7(6):571-80.
21. Tappenden P, Campbell F, Rawdin A, Wong R, Kalita N. The clinical effectiveness and cost-effectiveness of home-based, nurse-led health promotion for older people: a systematic review. *Health technology assessment (Winchester, England)*. 2012;16(20):1.
22. McCusker J, Verdon J. Do geriatric interventions reduce emergency department visits? A systematic review. *The Journals of Gerontology Series A: Biological Sciences and Medical Sciences*. 2006;61(1):53-62.
23. Cosco TD, Prina AM, Perales J, Stephan BC, Brayne C. Lay perspectives of successful ageing: a systematic review and meta-ethnography. *BMJ open*. 2013;3(6):e002710.
24. Partnerships JLAPS. Multiple Conditions in Later Life Top 10 Priorities 2018 [updated May 2018]. Available from: <http://www.jla.nihr.ac.uk/priority-setting-partnerships/health-with-multiple-conditions-in-old-age/top-10-priorities.htm>.
25. Frost R, Belk C, Jovicic A, Ricciardi F, Kharicha K, Gardner B, et al. Health promotion interventions for community-dwelling older people with mild or pre-frailty: a systematic review and meta-analysis. *BMC geriatrics*. 2017;17(1):157.
26. Gardner B, Jovicic A, Belk C, Kharicha K, Iliffe S, Manthorpe J, et al. Specifying the content of home-based health behaviour change interventions for older people with frailty or at risk of frailty: an exploratory systematic review. *BMJ open*. 2017;7(2):e014127.
27. Serra-Prat M, Sist X, Domenich R, Jurado L, Saiz A, Rocas A, et al. Effectiveness of an intervention to prevent frailty in pre-frail community-dwelling older people consulting in primary care: a randomised controlled trial. *Age and ageing*. 2017;46(3):401-7.
28. Huguet LG, González MN, Kostov B, Carmona MO, Francia CC, Nieto MC, et al. Pre Frail 80: Multifactorial Intervention to Prevent Progression of Pre-Frailty to Frailty in The Elderly. *The journal of nutrition, health & aging*. 2018:1-9.
29. Cameron I, Fairhall N, John B, Lockwood K, Monaghan N, Sherrington C, et al. A multifactorial interdisciplinary intervention in pre-frail older people: randomised trial. *Innovation in aging*. 2017;1(Suppl 1):196.
30. Luger E, Dorner TE, Haider S, Kapan A, Lackinger C, Schindler K. Effects of a home-based and volunteer-administered physical training, nutritional, and social support program on malnutrition and frailty in older persons: a randomized controlled trial. *Journal of the American Medical Directors Association*. 2016;17(7):671. e9-. e16.
31. Romera-Liebana L, Orfila F, Segura JM, Real J, Fabra ML, Möller M, et al. " Effects of a primary-care based multifactorial intervention on physical and cognitive function in frail, elderly individuals: a randomized controlled trial". *The Journals of Gerontology: Series A*. 2018:glx259.
32. Liu X, Ng DH-M, Seah JW-T, Munro YL, Wee S-L. Update on Interventions to Prevent or Reduce Frailty in Community-Dwelling Older Adults: a Scoping Review and Community Translation. *Current Geriatrics Reports*. 2019.
33. Drennan V, Walters K, Avgerinou C, Gardner B, Goodman C, Frost R, et al. Moving upstream in health promoting policies for older people with early frailty in England? A policy analysis. *J Health Serv Res Policy*. 2018;23(3):168-75.
34. Craig P, Dieppe P, Macintyre S, Michie S, Nazareth I, Petticrew M. Developing and evaluating complex interventions: the new Medical Research Council guidance. *BMJ*. 2008;337.

This document is uncontrolled				
Please refer to Primet Sopbox for current version				
HomeHealth	Version 5.0	IRAS ID: 275026	Authorisation date: 03.03.2020	Page <b>49</b> of <b>56</b>

35. Michie S, van Stralen MM, West R. The behaviour change wheel: a new method for characterising and designing behaviour change interventions. *Implement Sci.* 2011;6:42.
36. Walters K, Frost R, Kharicha K, Avgerinou C, Gardner B, Ricciardi F, et al. Home-based health promotion for older people with mild frailty: the HomeHealth intervention development and feasibility RCT. *Health technology assessment (Winchester, England).* 2017;21(73):1.
37. Clegg A, Bates C, Young J, Ryan R, Nichols L, Ann Teale E, et al. Development and validation of an electronic frailty index using routine primary care electronic health record data. *Age and ageing.* 2016;45(3):353-60.
38. Shah S, Vanclay F, Cooper B. Improving the sensitivity of the Barthel Index for stroke rehabilitation. *Journal of clinical epidemiology.* 1989;42(8):703-9.
39. Ferrucci L, Guralnik JM, Studenski S, Fried LP, Cutler Jr GB, Walston JD, et al. Designing randomized, controlled trials aimed at preventing or delaying functional decline and disability in frail, older persons: a consensus report. *Journal of the American Geriatrics Society.* 2004;52(4):625-34.
40. Prasad K, Kumar A, Misra S, Yadav AK, Johri S, Sarkar RS, et al. Reliability and validity of telephonic Barthel Index: an experience from multi-centric randomized control study. *Acta Neurol Belg.* 2018;118(1):53-9.
41. Wu C-y, Chuang L-l, Lin K-c, Horng Y-s. Responsiveness and validity of two outcome measures of instrumental activities of daily living in stroke survivors receiving rehabilitative therapies. *Clinical rehabilitation.* 2011;25(2):175-83.
42. Harwood R, Ebrahim S. The validity, reliability and responsiveness of the Nottingham Extended Activities of Daily Living scale in patients undergoing total hip replacement. *Disability and rehabilitation.* 2002;24(7):371-7.
43. Lin S-Y, Kerse N, McLean C, Moyes S. Validation of quality of life and functional measures for older people for telephone administration. *Journal of Primary Health Care.* 2010;2(1).
44. Fried LP, Tangen CM, Walston J, Newman AB, Hirsch C, Gottdiener J, et al. Frailty in older adults: evidence for a phenotype. *The Journals of Gerontology Series A: Biological Sciences and Medical Sciences.* 2001;56(3):M146-M57.
45. Op Het Veld LPM, de Vet HCW, van Rossum E, Kempen G, van Kuijk SMJ, Beurskens A. Substitution of Fried's performance-based physical frailty criteria with self-report questions. *Arch Gerontol Geriatr.* 2018;75:91-5.
46. Steffen TM, Hacker TA, Mollinger L. Age- and gender-related test performance in community-dwelling elderly people: Six-Minute Walk Test, Berg Balance Scale, Timed Up & Go Test, and gait speeds. *Phys Ther.* 2002;82(2):128-37.
47. Mijnders DM, Meijers JM, Halfens RJ, ter Borg S, Luiking YC, Verlaan S, et al. Validity and reliability of tools to measure muscle mass, strength, and physical performance in community-dwelling older people: a systematic review. *J Am Med Dir Assoc.* 2013;14(3):170-8.
48. Hurtig-Wennlof A, Hagstromer M, Olsson LA. The International Physical Activity Questionnaire modified for the elderly: aspects of validity and feasibility. *Public Health Nutr.* 2010;13(11):1847-54.
49. IPAQ. Guidelines for Data Processing and Analysis of the International Physical Activity Questionnaire (IPAQ)  
– Short and Long Forms. November 2005.
50. Rubenstein LZ, Harker JO, Salva A, Guigoz Y, Vellas B. Screening for undernutrition in geriatric practice: developing the short-form mini-nutritional assessment (MNA-SF). *J Gerontol A Biol Sci Med Sci.* 2001;56(6):M366-72.
51. Brooks R RR, De Charro F, editors. The measurement and valuation of health status using EQ-5D: a European perspective: evidence from the EuroQol BIOMED Research Programme.: Springer Science & Business Media; 2013.
52. Haywood KL GA, Fitzpatrick R. Quality of life in older people: a structured review of generic self-assessed health instruments. *Quality of life Research.* 2005;14(7):1651-68.
53. Bulamu NB, Kaambwa B, Ratcliffe J. A systematic review of instruments for measuring outcomes in economic evaluation within aged care. *Health Qual Life Outcomes.* 2015;13:179.
54. Tennant R, Hiller L, Fishwick R, Platt S, Joseph S, Weich S, et al. The Warwick-Edinburgh Mental Well-being Scale (WEMWBS): development and UK validation. *Health Qual Life Outcomes.* 2007;5:63.

**This document is uncontrolled**

Please refer to Primet Sopbox for current version

HomeHealth	Version 5.0	IRAS ID: 275026	Authorisation date: 03.03.2020	Page <b>50</b> of <b>56</b>
------------	-------------	-----------------	-----------------------------------	-----------------------------

55. Goldberg DP, Gater R, Sartorius N, Ustun TB, Piccinelli M, Gureje O, et al. The validity of two versions of the GHQ in the WHO study of mental illness in general health care. *Psychol Med*. 1997;27(1):191-7.
56. Hughes ME, Waite LJ, Hawkey LC, Cacioppo JT. A Short Scale for Measuring Loneliness in Large Surveys: Results From Two Population-Based Studies. *Res Aging*. 2004;26(6):655-72.
57. Nasreddine ZS, Phillips NA, Bedirian V, Charbonneau S, Whitehead V, Collin I, et al. The Montreal Cognitive Assessment, MoCA: a brief screening tool for mild cognitive impairment. *J Am Geriatr Soc*. 2005;53(4):695-9.
58. Zietemann V, Kopczak A, Muller C, Wollenweber FA, Dichgans M. Validation of the Telephone Interview of Cognitive Status and Telephone Montreal Cognitive Assessment Against Detailed Cognitive Testing and Clinical Diagnosis of Mild Cognitive Impairment After Stroke. *Stroke*. 2017;48(11):2952-7.
59. Pendlebury ST, Welch SJ, Cuthbertson FC, Mariz J, Mehta Z, Rothwell PM. Telephone assessment of cognition after transient ischemic attack and stroke: modified telephone interview of cognitive status and telephone Montreal Cognitive Assessment versus face-to-face Montreal Cognitive Assessment and neuropsychological battery. *Stroke*. 2013;44(1):227-9.
60. Lamb SE, Jorstad-Stein EC, Hauer K, Becker C, Prevention of Falls Network E, Outcomes Consensus G. Development of a common outcome data set for fall injury prevention trials: the Prevention of Falls Network Europe consensus. *J Am Geriatr Soc*. 2005;53(9):1618-22.
61. Hoefman R, Van Exel N, Brouwer W. iMTA valuation of informal care questionnaire (iVICQ). Retrieved. 2011;17(11):2013.
62. PSSRU - Curtis L, Burns, A. . Unit Costs of Health and Social Care 2016. 2016 [cited 05.05.19]. Canterbury: Personal Social Services Research Unit, [cited 05.05.19]. Available from: <http://www.pssru.ac.uk/project-pages/unit-costs/2016/index.php>.
63. Improvement N. NHS Improvement. Reference costs 2017-2018. 2018 05.05.19. Available from: <https://improvement.nhs.uk/resources/reference-costs/>.
64. Committee BJF. British National Formulary. In: Society. BMAaRP, editor. 2018.
65. Turner-Stokes L. Goal attainment scaling (GAS) in rehabilitation: a practical guide. *Clin Rehabil*. 2009;23(4):362-70.
66. Hsieh Y-W, Wang C-H, Wu S-C, Chen P-C, Sheu C-F, Hsieh C-L. Establishing the minimal clinically important difference of the Barthel Index in stroke patients. *Neurorehabilitation and neural repair*. 2007;21(3):233-8.
67. Smeeth L, Ng ES-W. Intraclass correlation coefficients for cluster randomized trials in primary care: data from the MRC Trial of the Assessment and Management of Older People in the Community. *Controlled clinical trials*. 2002;23(4):409-21.
68. Gawler S. An exploration of therapist and dose effects within an exercise intervention study for reducing falls and falls risk factors in community dwelling older people. . Doctoral Thesis, University College London. 2016.
69. White IR, Horton NJ, Carpenter J, Pocock SJ. Strategy for intention to treat analysis in randomised trials with missing outcome data. *Bmj*. 2011;342:d40.
70. Sullivan TR, White IR, Salter AB, Ryan P, Lee KJ. Should multiple imputation be the method of choice for handling missing data in randomized trials? *Statistical methods in medical research*. 2018;27(9):2610-26.
71. Hunter RM, Baio G, Butt T, Morris S, Round J, Freemantle N. An educational review of the statistical issues in analysing utility data for cost-utility analysis. *Pharmacoeconomics*. 2015;33(4):355-66.
72. University of Birmingham. Use of ICECAP in decision making 2019 [Available from: <https://www.birmingham.ac.uk/research/activity/mds/projects/HaPS/HE/ICECAP/decision-making/index.aspx>].
73. Franklin M, Davis S, Horspool M, Kua WS, Julious S. Economic evaluations alongside efficient study designs using large observational datasets: the PLEASANT trial case study. *Pharmacoeconomics*. 2017;35(5):561-73.
74. May CR, Mair FS, Dowrick CF, Finch TL. Process evaluation for complex interventions in primary care: understanding trials using the normalization process model. *BMC Family Practice*. 2007;8(1):42.
75. Office of National Statistics. 2011 Census data. 2011.

This document is uncontrolled				
Please refer to Primint Sopbox for current version				
HomeHealth	Version 5.0	IRAS ID: 275026	Authorisation date: 03.03.2020	Page <b>51</b> of <b>56</b>



## APPENDIX 1 – SCHEDULE OF ASSESSMENTS

	Screening (1)	Screening (2)	Baseline assessment <sup>1</sup>	Intervention	Post-Intervention	Final assessment	Medical notes extraction	Process evaluation (sample of intervention participants only)
Visit No:	Telephone	1	1		2	3	n/a	4
		0 months (immediately prior to baseline assessment)	0 Month	0-6 months	6 Month	12 Month (final outcome assessment)	Covering period of -6 to 12 months	
Window of flexibility for timing of visits:				n/a	-2 to +4 weeks	-2 to +4 weeks	Within 6 months of final assessment	Within 6 months of final assessment
Eligibility confirmation	X	X						
Informed Consent			X					X
Demographics			X					
Alcohol (AUDIT-C)			X					
Smoking			X					
Comorbidities							X	
Deprivation (Local area Index of Multiple Deprivation based on postcode)			X					
Covid-19 status			X		X	X		
Modified Barthel Index			X		X	X		
Nottingham Extended Activities of Daily Living			X		X	X		
Gait speed			X		X	X		
Grip strength			X		X	X		

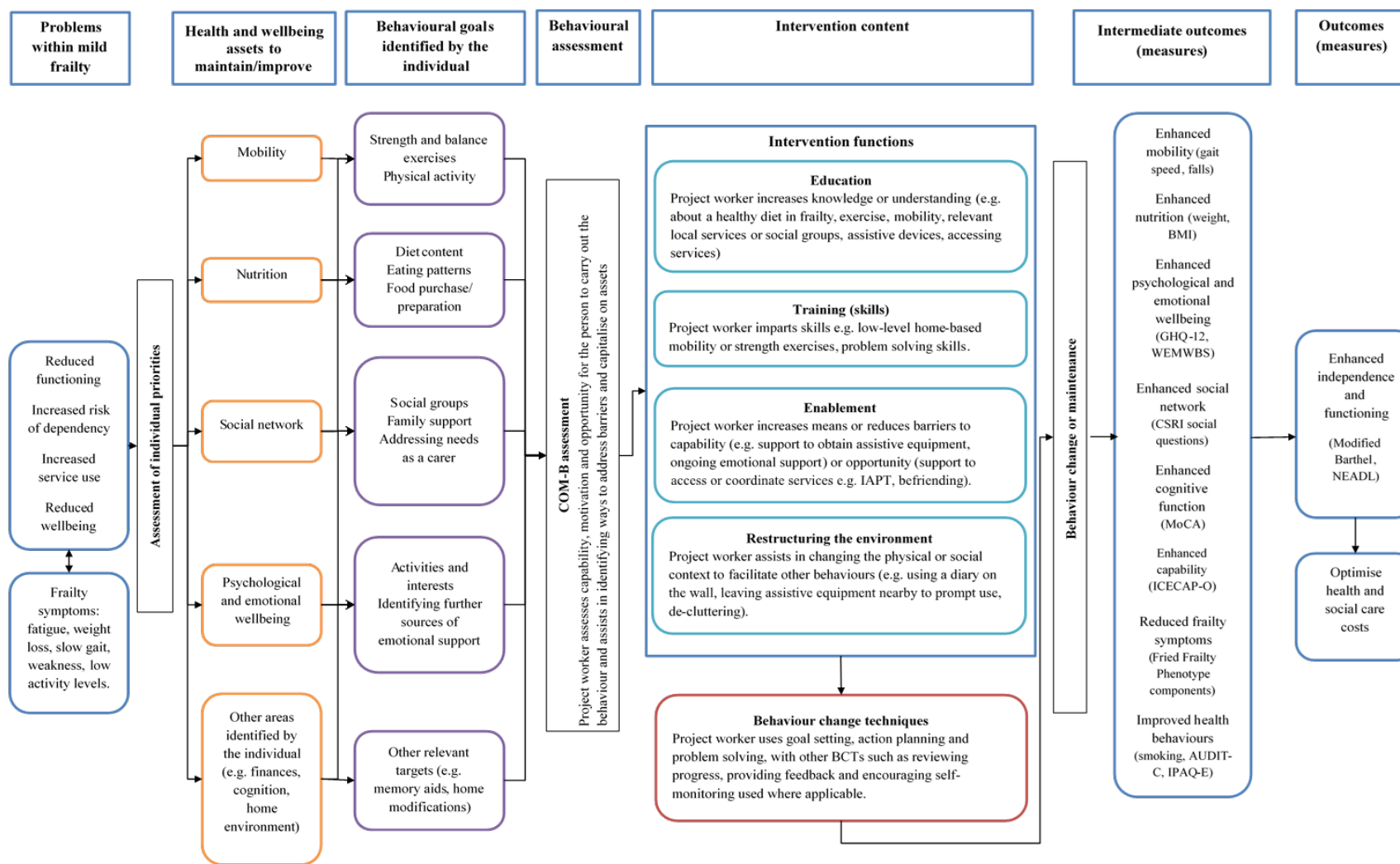
<b>This document is uncontrolled</b>				
Please refer to Priment Sopbox for current version				
HomeHealth	Version 5.0	IRAS ID: 275026	Authorisation date: 03.03.2020	Page 53 of 56

Physical activity			X		X	X		
BMI (weight, height)			X		X	X		
Warwick-Edinburgh Mental Wellbeing Scale (WEMWBS)			X		X	X		
Euro-QoL 5D-5L			X		X	X		
ICECAP-O			X		X	X		
12-item General Health Questionnaire			X		X	X		
UCLA 3-item			X		X	X		
Montreal Cognitive Assessment			X		X	X		
Falls (ProFANE consensus criteria)			X		X	X		
Mortality					X	X		
Carer burden			X		X	X		
Client Services Receipt Inventory			X		X	X		
Healthcare resource use							X	
Randomisation			X					
Adverse Events review			X		X	X	X	
Concomitant Medication review							X	
Process evaluation interview								X
Process evaluation intervention data				X				

<sup>1</sup>Randomisation can be carried out up to four weeks after a baseline assessment

This document is uncontrolled				
Please refer to Priment Sopbox for current version				
HomeHealth	Version 5.0	IRAS ID: 275026	Authorisation date: 03.03.2020	Page 54 of 56

## APPENDIX 2 – INTERVENTION LOGIC MODEL



This document is uncontrolled

Please refer to Primint Sopbox for current version

HomeHealth

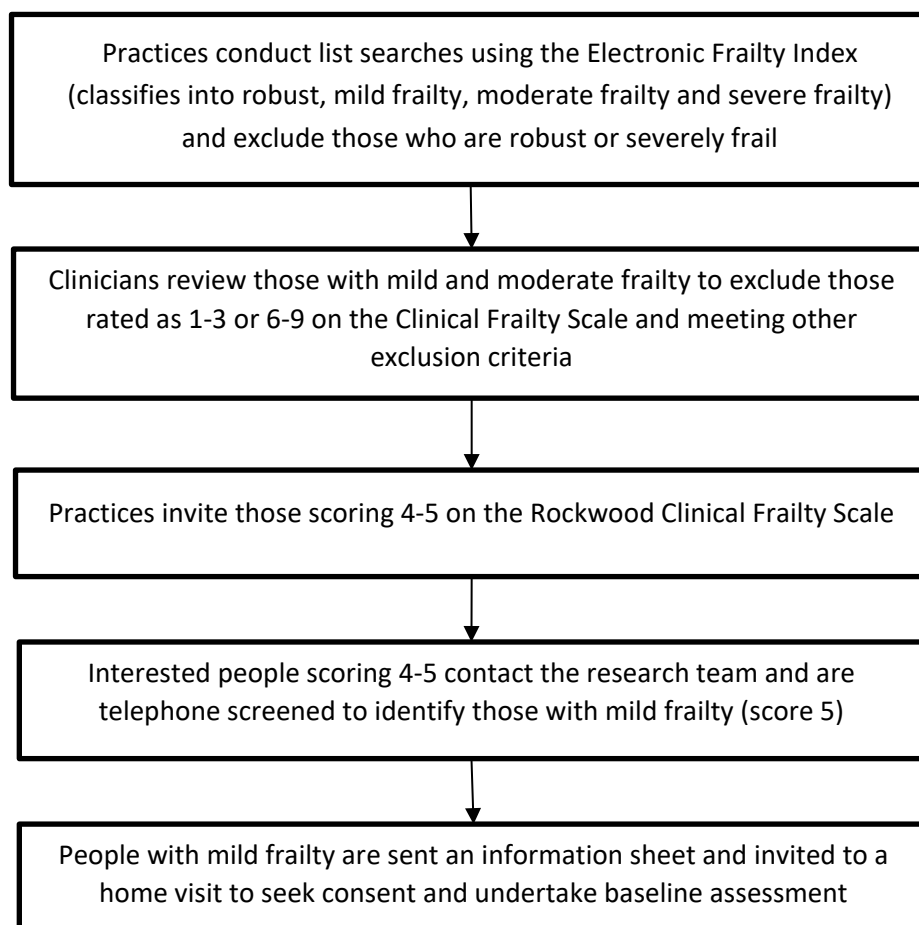
Version 5.0

IRAS ID: 275026

 Authorisation date:  
03.03.2020

Page 55 of 56

## APPENDIX 3 – RECRUITMENT FLOW CHART



This document is uncontrolled				
Please refer to Priment Sopbox for current version				
HomeHealth	Version 5.0	IRAS ID: 275026	Authorisation date: 03.03.2020	Page 56 of 56