

**Study Title: Treatment of Advanced Glaucoma Study (TAGS): A multicentre randomised controlled trial comparing primary medical treatment with primary trabeculectomy for people with newly diagnosed advanced glaucoma**

Internal Reference No: **13OY008**

Ethics Ref: 13/EM/00395

Date and Version No: Version 9, 25 October 2024

Chief Investigator: Mr Anthony King, Department of Ophthalmology, Queen's Medical Centre, Nottingham, NG7 2UH

Investigators: Mr Keith Barton, Prof Augusto Azuara-Blanco, Dr Jennifer Burr, Prof David Garway-Heath, Mr Graeme MacLennan, Prof John Norrie, Prof John Sparrow, Prof Luke Vale

Sponsor: Nottingham University Hospitals NHS Trust

Funder: National Institute for Health Research Evaluation, Trials and Studies Coordinating Centre, Health Technology Assessment (NIHR HTA) Programme

Signatures: Chief Investigator:



Funder number: 12/35/38  
NIHR158052 (10 year follow up)

Funder main study start date: 1 January 2014

Funder main study end date: 31 December 2022  
31 March 2027 (10 year follow up)

Study End Date 31 March 2027

ISRCTN 56878850

Funder Genetics sub study 24IG171 (Fight for Sight)  
Ref:

Study Office: TAGS Office  
Centre for Healthcare Randomised Trials (CHaRT)  
3<sup>rd</sup> Floor, Health Sciences Building  
University of Aberdeen, Foresterhill  
Aberdeen AB25 2ZD

Telephone: 01224 438089

E-mail: [tags@abdn.ac.uk](mailto:tags@abdn.ac.uk)

Website: <http://www.tagsstudy.co.uk>

## TABLE OF CONTENTS

<b>2</b>	<b>SYNOPSIS.....</b>	<b>10</b>
<b>3</b>	<b>GLOSSARY OF ABBREVIATIONS .....</b>	<b>11</b>
<b>4</b>	<b>BACKGROUND AND RATIONALE .....</b>	<b>13</b>
<b>5</b>	<b>OBJECTIVES .....</b>	<b>15</b>
5.1	Primary objective .....	15
5.2	Secondary Objectives.....	15
<b>6.</b>	<b>TRIAL DESIGN.....</b>	<b>16</b>
6.1	Summary of Trial Design .....	16
6.2	Primary and Secondary Outcome Measures.....	16
6.2.1.	Primary outcome .....	16
6.2.2	Secondary outcomes.....	16
6.3	Trial Participants.....	16
6.3.1.	Overall Description of Trial Participants .....	16
6.3.2	Inclusion Criteria.....	16
6.3.3	Exclusion Criteria .....	17
6.4	Study Procedures .....	17
6.4.1	Screening and Eligibility Assessment.....	17
6.4.2	Informed Consent.....	17
6.4.3	Recruitment projection .....	18
6.4.4	Baseline Assessments .....	18
<b>6.4.5</b>	<b>Randomisation and Code breaking .....</b>	<b>18</b>
<b>6.4.6</b>	<b>Subsequent assessments .....</b>	<b>19</b>
6.5	Definition of End of Trial .....	20
6.6	Discontinuation/ Withdrawal of Participants .....	21
6.7	Source Data.....	21
<b>7.</b>	<b>TREATMENT OF TRIAL PARTICIPANTS.....</b>	<b>21</b>
7.1	Treatment Strategies .....	21

7.2	Compliance with Study Treatment.....	21
7.3	Accountability of the Study Treatment.....	22
7.4	Concomitant Medication .....	22
<b>8.</b>	<b>SAFETY REPORTING .....</b>	<b>22</b>
8.1	Definitions.....	22
8.1.1	Adverse Event (AE).....	22
8.1.2	Serious Adverse Event.....	22
8.1.3	Expected Adverse Events .....	22
8.2	Reporting Procedures for All Adverse Events .....	23
8.2.1	Detecting AEs and SAEs.....	23
8.2.2	Evaluating AEs and SAEs .....	23
8.2.3	Reporting AEs and SAEs .....	23
<b>9.</b>	<b>STATISTICS .....</b>	<b>24</b>
9.1	Description of Statistical Methods .....	25
9.2	Planned subgroup analyses .....	25
9.3	Criteria for the Termination of the Trial.....	25
9.4	Procedures for Reporting any Deviation(s) from the Original Statistical Plan .....	26
9.5	Inclusion in Analysis .....	26
<b>10</b>	<b>ECONOMIC EVALUATION .....</b>	<b>26</b>
<b>11</b>	<b>DIRECT ACCESS TO SOURCE DATA/DOCUMENTS .....</b>	<b>27</b>
<b>12</b>	<b>ORGANISATION, TRIAL MANAGEMENT AND OVERSIGHT ARRANGEMENTS.....</b>	<b>27</b>
12.1	Trial office in Aberdeen.....	27
12.2	Local organisation in sites .....	28
12.2.1	Lead Ophthalmologist (Local Principal Investigator) .....	28
12.2.2	Local Research Nurse.....	28
12.3	Project Management Group (PMG).....	28
12.4	Trial Steering Committee (TSC) .....	28
12.5	Data Monitoring Committee (DMC) .....	29

<b>13</b>	<b>QUALITY ASSURANCE AND ETHICS .....</b>	<b>29</b>
13.1	Research Governance.....	29
13.2	Participant Confidentiality .....	29
13.3	Approvals.....	29
<b>14</b>	<b>DATA HANDLING, RECORD KEEPINGS AND ARCHIVING .....</b>	<b>30</b>
<b>15</b>	<b>FINANCING AND INSURANCE .....</b>	<b>30</b>
<b>16</b>	<b>PUBLICATION POLICY .....</b>	<b>30</b>
	<b>REFERENCES.....</b>	<b>31</b>
	<b>APPENDIX A – Study Flow Diagram.....</b>	<b>34</b>
	<b>APPENDIX B – Schedule of Outcomes .....</b>	<b>35</b>
	<b>APPENDIX C – GANTT CHART of STUDY Timelines .....</b>	<b>37</b>
	<b>APPENDIX D - AUTHORSHIP AND PUBLICATION POLICY FOR the TAGS STUDY .....</b>	<b>38</b>
	<b>APPENDIX E - EXTENDED FOLLOW-UP OF PARTICIPANTS .....</b>	<b>40</b>
	<b>APPENDIX F: ADVANCED GLAUCOMA GENETIC SCREENING SATELLITE STUDY .....</b>	<b>47</b>
	<b>APPENDIX G: EXTENDED FOLLOW-UP OF PARTICIPANTS (to 10 years).....</b>	<b>58</b>

## AMENDMENT HISTORY

Amend- ment No.	Protocol Version No.	Date issued	Author(s) of changes	Section amended	Details of change
1	1.1		Anthony King	<p>3. Glossary of abbreviations</p> <p>5.2 Secondary outcomes</p> <p>6.3.1 Overall description of trial participants</p> <p>6.3.2 Inclusion Criteria</p> <p>6.4.3: Recruitment projection</p> <p>6.4.6: Clinical outcomes</p>	<p>Redundant abbreviations removed.</p> <p>Esterman visual field graded instead of direct question on driving licence retention.</p> <p>Revision of eligible recruiting centres (see also 7.1).</p> <p>Removal of reference to female partners of male participants.</p> <p>New section added detailing feasibility pilot study. Subsequent section re-numbered.</p> <p>Revision to how eligibility determined from VF tests.</p> <p>Esterman visual field at baseline and 24 months replace question about driving licence retention.</p> <p>Removal of reference to pregnancies in female</p>

					partners of male participants.
				6.4.6 Economic outcomes	Rephrasing of sentence for clarity.
				7.1 Treatment Strategies:	All surgery will be undertaken by senior experienced glaucoma surgeons within 3 months of randomisation.
				8.1.3 Expected adverse events.	Index eye will be operated on first if both eyes eligible.  Addition of corneal decompensation.
				8.2.3 Reporting AEs and SAEs	Investigator or a delegate can update missing information following SAE notification.  Removal of reference to pregnancies in female partners of male participants.
				9.0 Statistics	Investigator or a delegate can notify a pregnancy.



				adverse events.	detachment to surgery arm.
				Appendix B	Additional row added to highlight requirement for Esterman Visual Fields at baseline and 24-month clinic visits.  Additional text added to highlight Humphrey Visual Field tests required for both eyes at each clinic visit.
5	2.0	22.10.14	Anthony King	7.1	Dissociation of identification of Index Eye from order of surgery.
6	3.0	1.3.16	Anthony King	8.1.3  9.0	Addition of definition for visual acuity adverse event for loss of vision.  Updated references in Section 9.0 and reference list.
7	4.0	4.8.16	Anthony King	6.4.6  8.1.3 Expected adverse events.  9.6	VFQ25 not being collected immediately prior to trabeculectomy  Addition of broad complex tachycardia whilst under general anaesthetic, and post-operative dizziness  Long term follow-up funding being pursued during trial.
8	5.0	31.7.18	Anthony King	Appendix E	Addition of Appendix E detailing long-term follow-up study.



					Update of study information in synopsis
9	6.0	5.3.19	Anthony King	Appendix F	Addition of Appendix F detailing sub-study to collect genetic material
23	6.1	17.4.20	Anthony King	Appendix E	Added that participants can be contacted via telephone to facilitate completion of questionnaires
29	6.2	20.10.22	Anthony King	Funder and study information	Extended end date to genetics sub-study
31	7	28.03.2023	Anthony King	Appendix F	Appendix F – further detail around approaching participants
34	9	25.10.2024	Anthony King	Appendix G	Addition of Appendix G detailing long term follow up.

## 2 SYNOPSIS

<b>Trial Design</b>	A multicentre RCT of current best medical care in the NHS (a stepped approach of medications) versus primary surgery.
<b>Trial Participants</b>	Adults presenting with advanced glaucoma in at least one eye
<b>Sample Size</b>	440
<b>Follow-up duration</b>	Twenty four months following entry into the study
<b>Main Trial Period</b>	01/01/2014 - 31/01/2020
<b>Primary Objectives</b>	Patient-centred Vision specific health profile (NEI-VFQ25) at 24 months
<b>Secondary Objectives</b>	<p>Patient-centred Patient reported health status, HUI-3; EQ-5D (5-level), GUI, NEI-VFQ25; patient experience</p> <p>Clinical Visual field mean deviation (MD) at 24 months</p> <p>Intraocular pressure (IOP); LogMAR visual acuity; need for cataract surgery; visual standards for driving; registered visual impairment; safety</p> <p>Economic Incremental cost per Quality adjusted Life year (QALY) gained (based on responses to the EQ-5D; HUI-3); incremental cost per QALY gained [based on responses to glaucoma utility index (GUI)]; incremental costs to NHS, personal social services and patients</p>
<b>Primary Outcome</b>	The primary outcome will be measured at two years, analysed by intention to treat.
<b>Secondary Outcomes</b>	The profile of secondary outcomes over time will be analysed by repeated measures using a linear mixed model. Subgroup analyses will explore potential effect modification of gender, age, one or both eyes affected and extent of visual field loss at baseline (<-20db, >=20db) on the primary outcomes.
<b>Surgical Intervention</b>	Standard trabeculectomy augmented with mitomycin-C
<b>Medical Intervention</b>	Currently licenced glaucoma drops will be used in the trial. These drops will be used in accordance with NICE guidelines. The drops will be used either as monotherapy or in combination therapy as part of an escalating drops regime for IOP control. In situations where maximum tolerated drops therapy is insufficient to control IOP acetazolamide may be administered orally either as 250mg tablet 4 times daily or 250mg SR capsule twice daily.
<b>Form</b>	Eye drops/oral
<b>Dose</b>	Various, depending on drug(s) used.

### 3 GLOSSARY OF ABBREVIATIONS

AE	Adverse Event
CHaRT	Centre for Healthcare Randomised Trials
CI	Chief Investigator
CRF	Case Report Form
DCE	Discrete Choice Experiment
dB	Decibels
DMC	Data Monitoring Committee
EQ-5D	EuroQol Group's 5 dimension health status questionnaire
GCP	Good Clinical Practice
GP	General Practitioner
GUI	Glaucoma Utility Index
HSRU	Health Services Research Unit
HTA	Health Technology Assessment
HUI	Health Utility Index
IOP	Intraocular Pressure
ISRCTN	International Standard Randomised Controlled Trial Number
IVR	Interactive Voice Response (randomisation)
logMAR	Logarithm of the mean angle of resolution
MD	Mean Deviation
NEI-VFQ25	National Eye Institute Visual Function Questionnaire 25
NHS	National Health Service
NIHR	National Institute Health Research
PI	Principal Investigator
PIL	Patient Information Leaflet
PMG	Project Management Group
QALY	Quality Adjusted Life Year
RCT	Randomised Controlled Trial
R&D	Research and Development
REC	Research Ethics Committee
SAE	Serious Adverse Event
SAP	Statistical Analysis Plan

SOP	Standard Operation Procedure
SD	Standard Deviation
SmPC	Summary of Product Characteristics
TSC	Trial Steering Committee
UK	United Kingdom
UoA	University of Aberdeen
VF	Visual Field

## 4 BACKGROUND AND RATIONALE

### **Background and Epidemiology:**

Glaucoma is a pressure related optic neuropathy resulting in progressive visual field deterioration. The World Health Organisation estimates that in 2010, 4.5 million people were blind due to glaucoma<sup>1</sup>, accounting for 12.3% of global blindness. Glaucoma is estimated to affect around 2% of the UK population over the age of 40 years, increasing with age<sup>2-6</sup>, as many as 10% of those in their 80s are affected. Glaucoma is the second commonest cause for registration as visually impaired in the UK accounting for 8.4-11.6% of registrations over the age of 65 years<sup>7,8</sup>. This is likely to be an underestimate.<sup>9</sup>

In England in the NHS there are over 1 million glaucoma related visits per year. Management of glaucoma patients constitutes a major part of ophthalmologists' workload accounting for 23% of all follow-up attendances to the UK hospital eye service<sup>10</sup> and 13% of all new referrals<sup>11</sup>. The number of patients with glaucoma is predicted to increase substantially as the result of an ageing population<sup>12</sup>. Currently no effective screening strategy exists in the UK to identify all patients with glaucoma early<sup>13</sup>.

Patients are unaware of glaucoma because it is typically asymptomatic in early stages, and as a consequence, in the UK between 10% and 39% of patients with glaucoma present with advanced disease in at least one eye<sup>14-18</sup>. In the most recent study, more than a third of patients presenting to secondary care had severe disease in at least one eye at presentation<sup>16</sup>. Those most at risk include the socially disadvantaged with no family history of glaucoma, those with high intraocular pressure, and those who do not attend an optometrist regularly<sup>16,18-20</sup>. Sight loss from glaucoma is preventable.

### **Advanced glaucoma at presentation - a risk factor for blindness:**

Presentation with advanced visual field loss increases the risk of further progression and blindness<sup>21-26</sup>. Odberg<sup>21</sup> noted in a cohort of patients with advanced glaucoma 70% of the affected eyes had progressed after a mean of 7.6 years despite treatment. Grant and Burke<sup>23</sup> found that eyes with a visual field defect at the beginning of treatment were more likely to progress to blindness than eyes in which treatment was started when there was no field loss. Wilson<sup>24</sup> found that initial field loss was the strongest determinant of the rate of further field loss. The rate of deterioration was 11.7 times faster in eyes with more advanced field loss at presentation. Mikelberg<sup>22</sup> found that when scotoma mass was small (i.e., early glaucoma) the rate of visual field loss was slow, but when large (i.e., severe glaucoma), rapid linear progression of visual field loss occurred. Oliver found that unilateral blindness due to glaucoma more than doubled the risk of bilateral blindness<sup>27</sup>.

### **Current treatment options:**

Reducing IOP is currently the only effective treatment for glaucoma<sup>28-31</sup>. Better IOP control at an early stage reduces the risk of progression to blindness. The Advanced Glaucoma Intervention Study (AGIS) demonstrated that the extent of IOP lowering was related to the progression of visual fields over an 8 year period showing that progression was least when IOPs were maintained below 18 mmHg at all follow-up visits<sup>32</sup>.

Primary treatment options in the UK for advanced glaucoma are mainly medical or surgical interventions. Currently most ophthalmologists treat patients medically starting with topical drop monotherapy followed by escalating the number of drop therapies until maximum tolerated combination therapy is achieved<sup>33</sup>. The most frequently used drops (latanoprost, timolol, brimonidine) are now available in generic form and therefore cost less. In patients who continue to progress or in whom target IOP is not achieved, clinicians may opt for surgical intervention, most frequently trabeculectomy.<sup>28-31,34</sup> Patients have indicated that they are not concerned about the treatment they receive as long as it is effective in prevention of further visual loss.<sup>35</sup>

Recently published NICE guidelines suggest patients presenting with advanced disease should be offered augmented trabeculectomy as a primary intervention and only offered medical treatment if surgery is declined<sup>36</sup> but highlighted that the evidence to support this recommendation is of poor quality. By using drops as first line treatment instead of surgery, and operating only on patients who fail this drop therapy, NHS resources could in the short term be saved, however the long term effects on visual outcome are uncertain. Modern glaucoma drops lower IOP significantly better and have fewer side effects than those previously used, this may obviate the need for surgery. Social resources will be saved by avoiding the need to support those becoming blind. A survey of consultant ophthalmologists indicated most do not follow NICE guidance and prefer medical treatment because of the poor evidence base and concern regarding surgery complications<sup>33</sup>.

Compared with surgery, primary drop treatment could save up-front surgery costs and other NHS costs in the short-term such as intensive follow-up and reduce the number of patients requiring cataract surgery to restore visual function. Avoiding surgery could improve patient health and QoL in the short-term, however in the long-term insufficient IOP control may produce more visual field loss and poorer health outcomes. A trial of these two primary treatments is therefore required.

### **Rationale for the study:**

There is uncertainty about how best to manage patients diagnosed with advanced glaucoma. Such individuals have a high risk of blindness and effective treatment is needed to minimise the chances of disease progression. At the moment NICE guidelines recommend initial surgery but acknowledge the lack of evidence to support this recommendation. Surgery may be more effective in the long-term but is associated with potential adverse events and increased costs at the time of surgery. Current medical therapies (eye drops) may be able to control the disease in a proportion of patients with advanced glaucoma. The question that we will try to answer is: Is primary medical treatment clinically and cost-effective for the management of newly diagnosed advanced glaucoma compared with the current standard care of trabeculectomy (glaucoma surgery).

A recent Cochrane systematic review<sup>28</sup> comparing primary medical versus surgical treatment for open-angle glaucoma (OAG) identified four relevant studies. Despite methodological weaknesses and non-standard treatments<sup>29 37-39</sup>, the authors concluded that “in more severe open-angle glaucoma there is some evidence, from three trials<sup>37-39</sup> that medication was associated with more progressive visual field loss and less intraocular pressure lowering than surgery<sup>37 38</sup>. Risk of treatment failure was greater with medication than trabeculectomy (OR 3.90, 95% CI 1.60 to 9.53; HR 7.27, 95% CI 2.23 to 25.71)”. Three of these four trials are now obsolete because of new medical treatments, and the most recent study did not include patients with advanced disease.

The authors concluded that surgery lowers IOP more than medication, however none of these trials specifically addressed the management of those presenting with advanced glaucoma or used modern glaucoma medications which produce better IOP lowering and have fewer side effects than previous generations of drops. The authors recommended that further RCTs comparing current medical treatments and modern glaucoma surgery are required in people with advanced open angle glaucoma<sup>28</sup>.

This uncertainty has subsequently been added to the UK Database of Uncertainties about the Effects of Treatments (UK-DUETS) as an important question requiring further investigation: <http://www.library.nhs.uk/DUETS/ViewResource.aspx?resID=327523&tabID=297&catID=14501>.

Sight loss from glaucoma is preventable; the Public Health Outcomes Framework for England 2013-2016 has made reducing numbers of people living with preventable sight loss a priority<sup>40</sup>. An advanced glaucoma intervention study (AGIS) has been undertaken but this did not compare primary medical and surgical interventions<sup>41</sup>, as all patients had failed maximum medical treatment prior to entry. In addition, it included patients with mild glaucoma. The USA-based collaborative initial glaucoma treatment study (CIGTS), while comparing the outcomes of primary medical and primary surgical treatment in newly diagnosed patients with glaucoma, enrolled patients presenting with mild disease (CIGTS score 4.6 +/-4.2)<sup>29</sup>. A recent update from CIGTS suggests that a subgroup of patients presenting with more advanced disease (MD < -10db) had slower visual field progression if their primary intervention was surgical<sup>42</sup>.

This study aims to reduce the uncertainty identified by the Cochrane review<sup>28</sup>, UK-DUETS and NICE<sup>36</sup> by undertaking a pragmatic RCT of current best medical care in the NHS (a stepped approach of medications) versus primary surgery. In addition it aims to address the concerns of the Public Health Outcomes Framework for England 2013-2016<sup>40</sup> by identifying the best treatment approach to minimise preventable sight loss in this group of vulnerable patients.

## **5 OBJECTIVES**

### **5.1 Primary objective**

The primary objective of this trial is to compare primary medical treatment with primary augmented trabeculectomy (glaucoma surgery) for patients presenting with advanced glaucoma (Hodapp Classification severe) in terms of patient reported health status using the national eye institute visual function questionnaire 25 (NEI-VFQ25).

### **5.2 Secondary Objectives**

- To compare generic, visual and glaucoma specific patient reported health and experience in the short and medium term
- To compare the incremental cost per Quality Adjusted Life Year (QALY) gained based on responses to the (1) EQ-5D (2) HUI-3 and (3) GUI of the more effective treatment
- To compare clinical outcomes (visual field mean deviation (MD) changes, LogMAR visual acuity changes, IOP, Esterman visual field for driving vision, registered visual impairment)
- To compare need for additional cataract surgery
- To compare safety by comparing adverse events from both surgical and medical interventions
- To employ an existing Discrete Choice Experiment (DCE) amongst participants with advanced glaucoma to generate a revised scoring system for the GUI that is more sensitive and specific for those with advanced disease.
- To compare long-term costs and benefits through a modeling evaluation

Further funding will be sought to evaluate clinical and patient reported outcomes at 5 and 10 years for this cohort of patients to further explore the lifetime experience, patient reported outcomes and visual loss (visual acuity and visual field survival) of this group of patients. These data would be incorporated into an updated economic model once they become available.

## 6. TRIAL DESIGN

### 6.1 Summary of Trial Design

A pragmatic<sup>43 44</sup> multicentre randomised controlled trial (RCT) comparing primary medical treatment with primary augmented trabeculectomy (standard care) (see Appendix A Trial Flow Diagram). Participants will be randomised to medical treatment or augmented trabeculectomy (1:1 allocation minimised by centre and bilateral disease). We will include an internal pilot to confirm the feasibility of recruitment targets.

The perspective of this study is that of the NHS, the patient and society. The framework of the study is an integrated clinical and economic evaluation of the costs and patient outcomes associated with two alternative methods of management of patients presenting with advanced glaucoma. Both treatment strategies currently in use have been reliably evaluated to assess efficacy and safety. The proposed study will be a prospective RCT to assess relative effectiveness, safety and costs in routine practice. The treatment protocol for the trial will reflect routine care to ensure that the results are representative of NHS practice.

### 6.2 Primary and Secondary Outcome Measures

#### 6.2.1. Primary outcome

The trial has a primary patient reported outcome, the vision specific health profile (NEI-VFQ25). The primary outcome will be evaluated at 24 months. This is sufficient time to capture the short-term differences in effects and to accurately profile the different patient pathways associated with each intervention.

#### 6.2.2 Secondary outcomes

Patient-centred	Patient reported health status as measured by EQ-5D (5-level), HUI-3, GUI, NEI-VFQ25 (Please see Appendix B for schedule)
	Patient experience
Clinical	Visual field mean deviation (MD) changes Intraocular pressure (IOP) LogMAR visual acuity change Need for cataract surgery Visual standards for driving Registered visual impairment Safety
Economic	Incremental costs to NHS, personal social services and patients Incremental QALYs (based on responses to EQ-5D, HUI-3 and glaucoma utility index)

### 6.3 Trial Participants

#### 6.3.1. Overall Description of Trial Participants

Four hundred and forty adults presenting with advanced (severe) glaucoma in at least one eye. Advanced disease will be classified according to the “severe” category of visual field loss using the Hodapp classification of glaucoma severity<sup>45</sup> [has **any** of the following]: 1. MD < -12.00dB, 2. More than 50% of points depressed below the 5% level on the pattern deviation probability plot, 3. More than 20 points depressed below the 1% level on the pattern deviation probability plot, 4. A point in the central 5 degrees has a sensitivity of 0-dB, 5. Points within 5 degrees of fixation under 15 dB sensitivity in both upper and lower hemi-fields.

Participants will be recruited in secondary care. Over 20 centres within the UK will be involved. Each recruiting centre has at least one consultant who subspecialises in glaucoma.

#### 6.3.2 Inclusion Criteria

- Severe glaucomatous visual field loss (Hodapp classification) in one or both eyes at presentation.



- Open angle glaucoma including pigment dispersion glaucoma, pseudoexfoliative glaucoma and normal tension glaucoma.
- Willingness to participate in a trial.
- Ability to provide informed consent.
- Adult  $\geq 18$  years.
- **Female participants of childbearing potential must be willing to ensure that they use effective contraception during the study and for 3 months thereafter. A negative urine pregnancy test for females of childbearing potential is required prior to randomisation.**

### 6.3.3 Exclusion Criteria

- Inability to undergo incisional surgery due to inability to lie flat or unsuitable for anaesthetic.
- High-risk of trabeculectomy failure such as previous conjunctival surgery, complicated cataract surgery.
- Secondary glaucomas, and primary angle-closure glaucoma.
- Females who are pregnant, nursing, or planning a pregnancy or females of childbearing potential not using a reliable method of contraception. A female is considered to be of childbearing potential unless she is without a uterus or is post-menopausal and has been amenorrheic for at least 12 consecutive months.

## 6.4 Study Procedures

The intervention will be either primary medical treatment or augmented trabeculectomy. Both interventions are established and well documented approaches to the management of glaucoma<sup>36</sup>. Following randomisation, care for both groups will follow NICE guideline recommendations<sup>36</sup>.

### 6.4.1 Screening and Eligibility Assessment

Patients likely to be eligible for the trial will be identified at the initial consultation for glaucoma by a member of the clinical assessment team. The consultant/research nurse will introduce the study to the patients and, if potential interest is expressed, provide further details of the study by means of the Patient Information Leaflet and information pack. The contact details of all interested patients will be passed on to the study research nurse. If the patient agrees in principle to the study then arrangements will be made for assessment and consenting. This may be done as a separate appointment or at the initial visit if the patient consents to participate at that visit. These arrangements will be individualised for each centre. Eligible participants will be asked for their signed informed consent before being randomised. Both the patient information sheet and the consent form will refer to the possibility of long-term follow-up.

### 6.4.2 Informed Consent

Informed consent to participate in the trial will be sought and obtained according to Good Clinical Practice (GCP) guidelines. Signed informed consent forms will be obtained from the participants by an appropriately trained individual. Potential participants will be given sufficient time to accept or decline involvement and will be given the opportunity to ask questions. It will be explained that entry into the trial is entirely voluntary and that treatment and care will not be affected by their decision. It will also be explained that they can withdraw at any time. In the event of their withdrawal, data collected will be retained for inclusion in the final analyses, unless the participant explicitly requests that it is erased.

In centres where it is possible to vet clinic referrals prior to the patient's attendance at clinic, potentially eligible subjects will be identified from their referral letters. In advance of their clinic appointment they will be sent a letter informing them that they may be approached by a member of the clinical team at the clinic visit and asked to participate in a trial.

This letter will be from the local lead clinical investigator who will be the glaucoma specialist in charge of their care. Where vetting of letters is not possible in advance of the clinic appointment, patients likely to be eligible for the trial will be identified at the initial consultation for glaucoma by a member of the clinical assessment team.

Following the provision of the patient information leaflet to the patients and a discussion about the study with the treating ophthalmologist and/or local research nurses/recruitment officers, eligible patients who state that they have had sufficient time and information to make a decision to participate will be invited to complete and sign the consent form at that clinic visit. The consent form will be countersigned by the local clinical team member who has taken the consent (ophthalmologist, local research nurse or recruitment officer).

Patients who take the trial paperwork home and subsequently decide (after further information provision, if requested, by phone from the local clinical team) can return this to the clinical team at their treating hospital by post. If participants return forms by post, the form will be counter-signed and dated on receipt by the local clinical team member (ophthalmologist, local research nurse or recruitment officer). The participant will either be sent a copy of the consent form back through the post or provided with one when they return to hospital.

#### **6.4.3 Recruitment projection**

All participating centres have indicated a throughput of least 20 eligible patients annually. The recruitment projection is based on 20 sites recruiting approximately 9-11 patients per year, with a staggered start of recruiting sites. This allows 440 participants to be recruited over 3 years incorporating a reduced rate during the first month of each site set up and 50% reduction during holiday time (August and December).

During the early part of the trial we will conduct a pilot study to demonstrate that recruitment is feasible and that the target of 440 is achievable with the given number of centres. The pilot phase will run until we have aggregated 75 recruiting months (anticipated to be around trial month 20). By that time we expect to have recruited around 55 participants. If less than 34 participants have been recruited in 75 centre months we would consider whether the study is feasible and enter discussions with the funder; between 34 and 41 we would modify our recruitment plan (e.g. whether we needed more sites); 42 recruits or above we would conclude that recruitment is feasible and continue without alteration.

#### **6.4.4 Baseline Assessments**

Following consent but prior to randomisation, participants' relevant medical history, IOP, Humphrey visual fields, best corrected LogMar visual acuity will be collected. A general ophthalmic examination including central corneal thickness will be undertaken. Participants will complete a questionnaire including the NEI-VFQ25, EQ-5D, HUI-3, GUI and a question asking about the patient's experience of glaucoma.

#### **6.4.5 Randomisation and Code breaking**

All participants who agree to enter the study will be logged with the central trial office and given a unique Study Number. Randomisation will utilise the existing proven remote automated computer randomisation application at the central trial office in the Centre for Healthcare Randomised Trials (CHaRT, a fully registered UK CRN clinical trials unit) in the Health Services Research Unit, University of Aberdeen. This randomisation application will be available both as a telephone based IVR system and as an internet based service.

Randomisation will be computer-allocated and minimised by centre and bilateral disease status. The unit of randomisation will be the participant (not the eye). Participants with both eyes affected by advanced glaucoma and eligible will undergo the same treatment in both eyes following randomisation. For those participants with both eyes eligible, an index eye will

be selected for evaluating clinical outcomes. The eye with better MD value (less severe visual field damage) will be nominated the index eye.

For those randomised to the surgery group with both eyes eligible, a period of 2-3 months would normally be allowed between operations on either eye. Prior to surgery IOP will be controlled with holding medical treatment.

**Masking:** As TAGS is investigating medical versus surgical management for patients with advanced glaucoma neither the participants nor the local clinical team can be masked to the randomised treatment allocation. The only masked aspect is the evaluation of visual fields at the end of the study which will be undertaken by an independent reading centre masked to the allocation.

No unblinding procedures are necessary as this is an open label trial.

#### **6.4.6 Subsequent assessments**

##### **Data Collection and Processing**

Patient-centred data will mainly be collected through patient-completed questionnaires. These will be completed either in the participant's home or at clinic, as appropriate. Clinical data will be collected and entered onto the TAGS secure web database at the participating sites.

*Patient centred outcomes:* NEI-VFQ25 is a vision specific patient reported quality of life tool. This validated questionnaire has been widely used to evaluate visual outcomes in glaucoma<sup>46-49</sup>. In addition to eliciting information about general health and vision it specifically addresses difficulty with near vision, distance vision, driving and the effect of light conditions on vision. We believe this provides a comprehensive evaluation of vision related quality of life. VFQ25 will be completed at baseline and 4, 12, and 24 months post randomisation. Generic EQ-5D 5L and HUI-3 and the glaucoma specific GUI will be collected to generate utility outcomes. These questionnaires will be completed at baseline, 1, 3, 6, 12, 18 and 24 months post-randomisation and immediately prior to trabeculectomy.

*Clinical outcomes:* Visual field (VF) mean deviation (MD) represents the amount of vision loss occurring due to glaucoma during the study period. This outcome measure has been chosen as it represents the severity of disease and will make possible the comparison of the efficacy of the interventions. We have selected a summary VF measure, for which there is data from a clinically similar cohort in the literature to power this study. It is a routinely measured parameter in standard care of glaucoma patients and it is the primary clinical measure on which management decisions in glaucoma are made, according to NICE guidelines.<sup>36</sup> Assessment of VF damage is the major measure of the functional impact of glaucoma with direct relevance to quality of life measures<sup>47 50-52</sup>. Humphrey visual fields (24-2 SITA-standard) will be performed on all participants, as recommended by NICE guidelines. All VFs tests will be performed by VF technicians. VFs eligible for analysis will have to achieve pre-defined reliability criteria (False positives <15%). If the visual fields are not reliable they will be repeated according to the clinicians' discretion in accordance with local clinical practice. Two baseline VFs (24-2 SITA-Standard) will be performed prior to randomisation to confirm eligibility. Eligibility will be confirmed on the basis of two reliable baseline 24-2 SITA standard VF tests performed. If the second visual field does not fulfil the criteria for "severe defect" by the Hodapp criteria then a third visual field must be undertaken prior to randomisation and the result of this will be deemed to define whether the subject is eligible. These will be performed at the same baseline clinic evaluation or at a separate evaluation but must be completed prior to randomisation. At 24 months two reliable 24-2 SITA standard visual fields will be performed and used to establish the VF outcome MD. In addition a reliable Esterman visual field will be performed and will be used to assess driving eligibility. An independent VF reading centre will assess all the VFs. The reading centre will be masked to the treatment received by the study participant.

Intraocular pressure (IOP) will be measured at baseline, 4, 12 and 24 months. The unit of IOP measurement is millimetres of mercury. Goldman tonometry will be used to measure IOP. The measurement will be undertaken by two observers, the first observer will be interacting directly with the patient. Without looking at the measurement dial the investigator will apply the Goldman tonometer to the eye, and will reach the endpoint for the measurement value of IOP. The second observer will then record the values from the measurement dial. This process will be repeated, and both measures will be recorded. If a difference of more than 3 mmHg exists between first and second measurement a third measurement will be undertaken. Best-corrected LogMAR visual acuity will be measured at baseline, 4, 12 and 24 months post randomisation. Complications of surgery, need for cataract surgery and therapy changes, will be captured from the participants' case records. All clinical outcomes will be recorded on a trial specific CRF.

Retention of ability to drive is one of the most important issues to patients with glaucoma<sup>35</sup>. All patients diagnosed with glaucoma are obliged to inform the DVLA of their diagnosis. Visual standards for driving are assessed on the basis of VF and visual acuity levels. This assessment is arranged at regular intervals by the DVLA. To evaluate visual standard for driving all participants will have an Estermann Visual Field preformed (on the Humphrey Visual Field Analyser) at baseline and final visit at 24 months. Registration as visually impaired is based on visual acuity and visual field criteria. Consultant ophthalmologists are responsible for registering patients as visually disabled on the basis of these criteria. If a participant has been registered as visually impaired or severely visually impaired, this will be recorded along with the date of registration in the study CRF at 24 months.

**Economic outcomes:** Costs of initial treatments (surgery/medications) including time in hospital and secondary care use will be based on data collected in CRFs. Primary care, personal social service use and patient costs will be collected via questionnaire at 4, 12 and 24 months post-randomisation. Responses to the EQ-5D, HUI-3 and GUI will be combined with relevant tariffs to produce QALYs. Costs and QALYs will be combined in a cost-utility analysis for both 'within trial' and modelled over the patient's lifetime. For the latter, a model will be developed from our previous NIHR HTA funded studies<sup>13 53</sup>.

**Discrete Choice Experiment:** An existing DCE questionnaire will be administered to trial participants to obtain utility scores more applicable to people with advanced glaucoma. The DCE questionnaire will be administered to all trial participants at 27 months. By this time the treatment profiles associated with each randomisation option will be established and patients will be in a position to make experience based judgements. This time point has also been chosen to minimise the burden of patient questionnaires which may occur at other time points. These data will be used to score the GUI responses and will be incorporated into the economic evaluation.

**Pregnancy:** Any pregnancy that occurs in a female participant during the study should be followed to outcome. In some circumstances, it may be necessary to monitor the development of the new-born for an appropriate period post- delivery.

Should the female participant not wish for the pregnancy to be followed to outcome or beyond, this should be noted in the CRF and medical notes as appropriate.

## 6.5 Definition of End of Trial

The end of trial is the date of the last 24-month follow-up of the last participant, although, subject to additional future funding, the intention is to follow-up participants for 10 years. The end of current trial funding is 31 January 2020. Glaucoma is a lifelong disease and patients will need to be monitored and treated for their glaucoma in accordance with NICE guidelines

following the end of the study. This will be the responsibility of the clinician overseeing their glaucoma care.

#### 6.6 Discontinuation/ Withdrawal of Participants

Participants can withdraw at any time. The local clinical team would identify what the participant wishes to withdraw from (clinical intervention, completing questionnaires etc). In the event of withdrawal, data collected to that time-point will be used in the final analyses unless the participant explicitly requests that data are deleted. Participants would be advised of any need for continuing clinical follow-up to monitor/treat their advanced glaucoma.

The reason for withdrawal will be recorded in the CRF.

#### 6.7 Source Data

Source documents are original documents, data, and records from which participants' CRF data are obtained. These include, but are not limited to, hospital records (from which medical history and previous and concurrent medication may be summarised into the CRF) and correspondence. CRF entries will be considered source data if the CRF is the site of the original recording (e.g. there is no other written or electronic record of data). In this study all clinical data are routinely collected in medical notes and other relevant documents and therefore the CRF will not be the source documents.

Participant completed questionnaires will be source data.

All documents will be stored safely in confidential conditions. On all study-specific documents, other than the signed consent form, the participant will be referred to by the unique study number, not by name.

### 7. TREATMENT OF TRIAL PARTICIPANTS

#### 7.1 Treatment Strategies

##### **Arm 1: Primary Medical Treatment** – escalating medical therapy

Participants randomised to medical management can be prescribed a variety of currently licenced glaucoma drops. These drops will be used in accordance with NICE guidelines<sup>36</sup>. Definition of escalating medical treatment: study participants may be started on one or more medications at their initial visit depending upon the judgement of the treating clinician. When monotherapy is initiated this should be with a prostaglandin analogue as directed by NICE guidelines, subsequent addition of medications is based on clinician judgement/preference. When drops fail to control IOP adequately oral carbonic anhydrase inhibitors may be used.

##### **Arm 2: Primary trabeculectomy** – standard trabeculectomy augmented with mitomycin-C

Definition of standard trabeculectomy: creation of a “guarded fistula” by making a small hole in the eye which is covered by a flap of partial thickness sclera and which allows aqueous humour to egress from the eye into the subconjunctival space. The operation may be performed under either local or general anaesthetic and normally takes about 40-60 minutes to complete.

All surgery will be undertaken within three months of randomisation by a consultant who subspecialises in glaucoma or a glaucoma fellow who has performed at least 30 trabeculectomies. Where both eyes are eligible for the study a decision will be made locally about which eye will undergo trabeculectomy first.

#### 7.2 Compliance with Study Treatment

This is designed as a pragmatic trial and compliance will be monitored in the study as it would be in routine clinical practice by asking the patient if they are taking their drops. There is currently no practical and effective method for monitoring compliance in patients taking glaucoma medications. In essence the degree of compliance will feed into the outcome

measurements as poor compliance in the medical group is likely to lead to further disease progression. There is no requirement for participants to return any unused eye drops.

### 7.3 Accountability of the Study Treatment

The local clinical team will use a standard hospital prescription form or will ask the patient's GP to prescribe the medications required – whatever is standard practice for that department. This is pragmatic and represents standard NHS practice.

### 7.4 Concomitant Medication

Medications as required for normal clinical care should be prescribed for the patients. Throughout the study Investigators may prescribe any concomitant medications or treatments deemed necessary to provide adequate supportive care.

## 8. SAFETY REPORTING

### 8.1 Definitions

#### 8.1.1 Adverse Event (AE)

An **adverse event** (AE) is any untoward medical event affecting a clinical trial participant that does not necessarily have to have a causal relationship. Adverse events are not:

- Continuous and persistent disease or symptom, present before the trial, which fail to progress;
- Signs or symptoms of the disease being studied

#### 8.1.2 Serious Adverse Event

A serious adverse event (SAE), is any AE that:

- results in death;
- is life threatening (i.e. the subject was at risk of death at the time of the event; it does not refer to an event which hypothetically might have caused death if it were more severe);
- requires hospitalisation or prolongation of existing hospitalisation;
- results in persistent or significant disability or incapacity;
- is a congenital anomaly or birth defect,
- Is otherwise considered medically significant by the investigator

Note: Hospitalisations for treatment planned prior to randomisation and hospitalisation for elective treatment of a pre-existing condition will not be considered as an AE. Complications occurring during such hospitalisation will be AEs or SAEs as appropriate.

#### 8.1.3 Expected Adverse Events

In this trial the following events are potentially expected:

**Medical Treatment:** Redness, stinging, itching, transient blurred vision, eyes watering, ocular discomfort, allergy, eyelash growth, change in skin colour around eye, change in iris colour, shortness of breath, unpleasant taste in mouth, dry mouth, fatigue, kidney stones, skin rash, cataract formation and retinal detachment. In some case these symptoms may be due to preservatives in the drops – if this is the case preservative free drops can be used.

**Trabeculectomy with mitomycin C:** Discomfort, blurred vision, corneal epithelial defect, conjunctival button-hole, flap dehiscence, IOP too low, transient choroidal effusion, suprachoroidal haemorrhage, hyphema, early bleb leak, shallow anterior chamber (grades 1-3), iris incarceration, persistent uveitis, transient or permanent ptosis, macular oedema, malignant glaucoma, corneal decompensation, cataract formation and retinal detachment, late bleb leak, bleb infection, bleb related endophthalmitis, permanent severe loss of vision at time of surgery (< 1/500), bleeding in the eye, broad complex tachycardia whilst under general anaesthetic, post-operative dizziness.

#### **Visual Acuity Adverse event**

Any of the following:

- Irreversible loss of 10 ETDRS letters of logMAR visual acuity,

- loss of 2 or more stages of categorical visual acuity measurement (Count Fingers, Hand Motion, Light Perception, No Light Perception)
- any loss to No Light Perception.

These are based on knowledge of adverse events associated with augmented trabeculectomy and the relevant product information documented in the SmPC. The latest online version of the appropriate SmPC will be considered in the assessment of an adverse event.

## 8.2 Reporting Procedures for All Adverse Events

### 8.2.1 Detecting AEs and SAEs

Participants will be asked about any AEs. When an AE occurs, it is the responsibility of the local Principal Investigator (PI) (or delegate) to review appropriate documentation (e.g. hospital notes, laboratory and diagnostic reports) related to the event.

Planned hospital visits for conditions other than those associated with glaucoma will not be collected or reported.

### 8.2.2 Evaluating AEs and SAEs

#### Assessment of Seriousness

The Principal Investigator (or a delegate) will make an assessment of seriousness as defined in section 8.1.2.

For AEs that meet the criteria for seriousness as defined in section 8.1.2, causality and expectedness will be evaluated.

All deaths for any cause (related or otherwise) will be recorded on the serious adverse event form.

Hospital visits (planned or unplanned) for further treatment of glaucoma will be recorded as outcome measures, but will not be reported as serious adverse events.

Any SAEs related to the treatment for glaucoma (e.g. if a participant is admitted to hospital for treatment of infection) will be recorded on the serious adverse event form.

#### Assessment of Causality

The Investigator must make an assessment of whether the SAE is likely to be related to treatment according to the following definitions:

An event is defined as related if it occurs as a result of a procedure required by the protocol, whether or not this procedure is the specific intervention under investigation and whether or not it would have been administered outside the study as normal care. This includes the procedure that the participant has been randomised to (e.g. a hospital re-admission due to bleeding after surgery would be a related SAE).

All SAEs judged as related to study procedures are considered to have a causal relationship.

Alternative causes such as natural history of the underlying disease, concomitant therapy, other risk factors and the temporal relationship of the event to the treatment should be considered.

#### Assessment of Expectedness

When assessing expectedness refer to the expected events (Section 8.1.3)

### 8.2.3 Reporting AEs and SAEs

There is no need to report non-serious events to the CI, Sponsor or REC.

### **Reporting responsibilities**

An SAE form is to be uploaded onto the trial website within 24 hours of the investigator's knowledge of the event. The Trial Manager will be automatically notified. If, in the opinion of the local PI and the CI, the event is confirmed as being *serious* and *related* and *unexpected*, the CI or Trial Manager will notify the sponsor within 24 hours of receiving the signed SAE notification.

The CI (or an appropriate delegate) will inform the main REC of these safety issues. Related and unexpected SAEs will be reported no later than 15 calendar days after they are first aware of the event.

If all the required information is not available at the time of reporting, the Investigator (or a delegate) must ensure that any missing information is provided as soon as this becomes available. It should be indicated on the report that this information is follow-up information of a previously reported event.

All related SAEs will be summarised and reported to the Ethics Committee, the Funder and the Trial Steering Committee in their regular progress reports.

### **Pregnancy**

Pregnancy is not considered an AE or SAE however the investigator must collect pregnancy information for female trial subjects who become pregnant while participating in the study (TAGS definition is while taking or within three months of ceasing to take study medications). The Investigator (or a delegate) should record the information on a Pregnancy Notification Form and submit this to the Sponsor within 14 days of being made aware of the pregnancy.

Any pregnancy that occurs in a participant during the study should be followed to outcome. In some circumstances, it may be necessary to monitor the development of the new-born for an appropriate period post-delivery.

Should the participant not wish for the pregnancy to be followed to outcome or beyond, this should be noted in the CRF and medical notes as appropriate.

## **9. STATISTICS**

The primary patient reported outcome is the health status measured by the NEI-VFQ25 assessment at 24 months. A study with 190 participants in each group would have 90% power at 5% significance level to detect a difference in means of 0.33 of a standard deviation (SD), this translates to 6 points on the NEI-VFQ25 assuming a common SD of 18 points observed in previous work which is a clinically relevant effect size in patients with advanced glaucoma<sup>54</sup>.<sup>55</sup> Seven points is a likely minimally important difference based on our pilot work on NEI-VFQ scores in patients with glaucoma<sup>55</sup> but there is uncertainty and so we have opted for a more conservative 6 point difference, which is supported by the literature for another chronic eye disease, macular degeneration<sup>56</sup>. Assuming a drop-out rate of 13.5% due to declining further follow-up and death, a total of 440 participants would need to be randomised to be able to detect this difference.

For the secondary clinical outcome (visual field score, mean deviation [MD]) the study will have 90% power at a 5% level of significance to detect a 1.3db difference in mean deviation. This is derived from a subgroup of patients with advanced glaucoma<sup>28 42</sup> and is a clinically significant difference in the context of advanced glaucoma and predictive further visual disability.

### **Methods to protect against sources of bias**



Selection bias should be minimised and external validity should be maximised as we have used an appropriately sized study sample size, multiple centres and clinicians, and participants are randomised.

To ensure that recognised standard trabeculectomy procedures<sup>57 58</sup> are being followed by all participating glaucoma surgeons all potential surgeons will complete a questionnaire about their surgical technique.

It is impossible to mask the patient or those measuring outcomes to the intervention. All visual field evaluations will be undertaken by an independent reading centre masked to the participant intervention. Intraocular pressure measurement will be undertaken by two observers one taking the reading and the other reading the IOP value to minimise risk of measurement bias.

The expected attrition rate is low based on previous glaucoma treatment RCTs and we have allowed for a potential attrition rate of 13.5% over 24 months to accommodate this.

### 9.1 Description of Statistical Methods

Baseline characteristics, follow-up measurements and safety data will be described using the appropriate descriptive summary measures. The primary outcomes measured at two years will be analysed using linear regression correcting for baseline measure of the primary outcome and other prognostic variables, for example amount of vision loss and pressure at baseline, one or both eyes affected. We will also explore the profile of primary outcomes over time by analysing repeated measures using a linear mixed model. All models will include a random effect for surgeon. The primary analysis strategy will be intention-to-treat. Potentially missing data will be handled using appropriate methods<sup>59</sup> depending on the amount and pattern of missingness with sensitivity analysis to test assumptions<sup>60</sup>. In trials of medical versus surgical management there exists potential for cross-over to the alternative allocation. Therefore, if required, in addition to the "effectiveness" estimate from the intention-to-treat analyses we will explore "efficacy" estimates using causal modelling methods suitable for complex interventions<sup>61</sup>. Secondary outcomes will be analysed using a similar strategy with models suitable for the outcome (i.e. logistic regression for dichotomous outcome need for cataract surgery at two years). Outcomes measured at the eye-level will be analysed initially using data from the index eye only (excluding the other eye in participants with bilateral disease). Sensitivity analysis using data from all eligible eyes will be analysed by including a random effect at the participant level to reflect the lack of independence of eyes within participants. All treatment effects will be derived from these models and presented with 95% confidence intervals.

### 9.2 Planned subgroup analyses

Planned subgroup analyses are intended to explore potential effect modifications of gender, age, one or both eyes affected and extent of visual field loss at baseline (<20db, ≥20db) on the primary outcomes. Subgroup by treatment interaction will be assessed by including interaction terms in the models outlined above.

### 9.3 Criteria for the Termination of the Trial.

Due to the staggered nature of recruitment and the primary outcome measurement at two years we do not anticipate that the trial would be terminated early for benefit. We propose one main effectiveness analysis at the end of the trial. During the trial, safety and other data will be monitored by reports prepared for the DMC. The frequency of DMC meetings will be decided with the DMC but we anticipate that these will be at least annually whilst the trial is in recruitment phase

#### 9.4 Procedures for Reporting any Deviation(s) from the Original Statistical Plan

The Statistical Analysis Plan (SAP) will be drafted early in trial, before the second DMC and TSC meetings so that those committees can pass comment on the content of the SAP. Upon agreement of content this will constitute the first version of the SAP. Any changes to the SAP will be documented in accordance with CHARTs SOPs and the version number incremented. The final version of the SAP will be signed off before the end of the trial recruitment period and before any unbinding takes place. Any post-hoc analyses not outlined in the SAP will be labelled as such in any reports to the funder and publications arising from the trial.

#### 9.5 Inclusion in Analysis

All randomised participants will be included in the analysis.

#### 9.6 Longer term patient outcomes

Funding will be sought for an evaluation of longer-term patient health and clinical outcomes at 3, 5 and 10 years.

### 10 ECONOMIC EVALUATION

Within this study both a 'within trial' and a model based economic evaluation will be conducted. These analyses will take the form of a cost-utility analysis and a cost-benefit analysis. The 'within trial' analyses will take the perspective of the NHS and personal and social services, but we will also take a wider perspective by including costs borne by the participants and their families. The model based analysis will take the perspective of the NHS and personal and social services. As the duration of follow-up in both the within trial and the model based analyses is greater than one year both costs and benefits will be discounted at 3.5%, the UK recommended rate<sup>62</sup>.

**Within trial analysis cost-utility analysis:** For each trial participant the use of health and social care services as well as out of pocket expenses will be recorded. The use of services for the initial treatments (surgery/medications) including time in hospital will be collected on the CRFs. Also collected on the CRFs will be the use of other secondary care services e.g. duration of any hospitalisations, number of outpatient visits, use of tests and changes in medications. Use of primary care (e.g. general practitioner visits, practice and district nurse contacts, etc), personal social services and patient costs (e.g. out of pocket expenses) will be collected via questionnaire (see section 6.4.6 administration information). Further patient costs (time and travel costs for accessing particular types of care) will be based upon a time and travel questionnaire adapted from one developed by the UK working group of patient costs and successfully used in a large number of NIHR HTA programme funded projects previously. This questionnaire will be administered at 18 months post-randomisation.

Costs for healthcare services will be obtained from standard sources such as NHS reference Healthcare Resource Group (HRG) tariffs, the British National Formulary<sup>63</sup> for medications, Unit costs of Health and Social Care<sup>64</sup> for contacts with primary care. Further data will come from the study centres themselves e.g. for the costs of consumable and other equipment used in the surgery. The price year adopted for the base case analysis will be the year when the final analysis is conducted. For each participant measures of use of resources will be combined with unit costs to provide a cost for that participant.

As described in section 6.4.6 above the relative changes in health related quality of life resulting from the physical and psychological benefit together with any harms associated with each treatment strategy and with subsequent treatments will be captured by the EQ-5D 5L, HUI-3 and the glaucoma specific GUI. Tariffs are not currently available for the EQ-5D 5L but responses can be crosswalked to scores for the EQ-5D 3L and this scoring will be used unless EQ-5D 5L scoring system becomes available during the lifetime of the trial. GUI responses will be converted into utilities using tariffs developed from the DCE (section 6.4.6). Health state utilities from both the EQ-5D and HUI-3 and the GUI will then be used to estimate QALYs for each participant using the area under the curve approach.

Data on costs and QALYs from both the EQ-5D and HUI-3 and the GUI for each participant will be used to estimate mean cost and QALYs for each intervention group. The cost and QALY data will then be used to estimate incremental costs, QALYs and incremental costs per QALY. These data will be presented as point estimates and bootstrapping techniques will be used to estimate the statistical imprecision surrounding them. The results of this stochastic analysis will be presented as cost and QALY plots and as cost-effectiveness acceptability curves<sup>65</sup>.

**Model based analysis cost-utility analysis:** Drawing upon our existing modelling expertise in this area<sup>13 53</sup> an economic model that describes the progression of disease for those with advanced glaucoma (our earlier work included advanced glaucoma but our revised model will include a finer graduation for disease) will be developed. The model will be constructed following guidelines for best practice in economics modelling<sup>66 67</sup>.

The use of services both for the treatment and management of advanced glaucoma will be modelled and the costs of these events will be based upon the estimates for these events derived from within the trial and where necessary by revising the estimates from our existing models. Similarly, the trial based data will be the main source of data for the economic model but it will be supplemented by focused searches of the literature and health economic data bases (e.g. the Centre for the Evaluation of Value and Risk in Health (CEVR) Cost Effectiveness Analysis (CEA) Registry; <https://research.tufts-nemc.org/cear4/>; NHS Economic Evaluation Database) to update the estimates used within our existing models.

As already noted both costs and outcomes will be discounted at 3.5% in the base case analyses<sup>62</sup>. Further data required for the model relates to the transition and other probabilities of events occurring over the lifetime of patients. These probabilities include the risk of recurrence and progression as well as probabilities of receiving different types of intervention should progression occur.

The model will be used to produce estimates of costs, QALYs (from the EQ-5D, HUI-3 and the GUI). Cost-effectiveness will be reported as incremental cost per QALY gained (at both 2 years and over the patient's lifetime). The model will be probabilistic and distributions will be attached to all parameters; the shape and type of distribution will depend upon the data available and recommendations for good practice in modelling (<http://www.nicedsu.org.uk/TSD%2013%20model%20parameters.pdf>). The results will also be presented as point estimates of costs, effects, incremental costs, QALYS, and measures cost-utility. They will also be presented as plots of costs and QALYs derived from the probabilistic analysis and cost-effectiveness acceptability curves. Deterministic sensitivity analyses will be combined with the probabilistic analysis to explore other forms of uncertainty.

## **11 DIRECT ACCESS TO SOURCE DATA/DOCUMENTS**

Direct access will be granted to authorised representatives from the sponsor, host institution and the regulatory authorities to permit trial-related monitoring, audits and inspections.

## **12 ORGANISATION, TRIAL MANAGEMENT AND OVERSIGHT ARRANGEMENTS**

### **12.1 Trial office in Aberdeen**

The Trial Office is in the Centre for Healthcare Randomised Trials (CHaRT) based within the Health Services Research Unit, University of Aberdeen and provides day to day support for the clinical centres. It is responsible for providing and maintaining the randomisation service, trial management, data processing, statistical analysis and communicating with the sites about TAGS specific issues. We will produce newsletters for collaborators to inform everyone of progress and maintain enthusiasm.

The Health Economic Evaluation and analysis will be undertaken by the University of Newcastle.

The TAGS Office Team (Aberdeen-based grant holders and study office members) will meet regularly with the CI during the course of the study to ensure smooth running and trouble-shooting

## 12.2 Local organisation in sites

### 12.2.1 Lead Ophthalmologist (Local Principal Investigator)

Each collaborating centre will identify a Lead Ophthalmologist who will be the point of contact for that centre. The responsibilities of this person will be to:

- establish the study locally (for example, by getting agreement from clinical colleagues; facilitate local regulatory approvals; identify, appoint and train a local Research Nurse; and inform all relevant local staff about the study (e.g. other ophthalmologists, junior medical staff, secretaries, ward staff))
- take responsibility for clinical aspects of the study locally (for example if any particular concerns occur)
- identify and/or support colleagues to identify and follow-up participants
- notify the Trial Office of any unexpected clinical events which might be related to study participation
- provide support, training and supervision for the local Research Nurse(s)
- represent the centre at the collaborators' meetings
- report any safety issues to the CI/Trial office.

### 12.2.2 Local Research Nurse

Each collaborating centre will appoint a local Research Nurse to organise the day to day recruitment of participants to the study. The responsibilities of this person will be to:

- keep regular contact with the local Lead Ophthalmologist, with notification of any problem or unexpected development
- maintain regular contact with the TAGS Office
- keep local staff informed of progress in the trial
- identify any eligible patients at clinics; explain the study and the potential for participation in TAGS if they are eligible
- confirm and record patient's eligibility and obtain written consent
- keep a log of whether patients are recruited or not (with reasons for non-participation)
- collect baseline data describing the participant, log this information in the web-based TAGS database and send paper copies to the Trial Office along with the original signed consent forms
- use this information to randomise the participant
- ensure treatment and post-treatment data are collected and recorded in the web-based TAGS database, and send paper copies (as requested) to the Trial Office
- file relevant study documentation (e.g. consent forms) in the participant's medical records
- organise alternative recruiters in case of holiday or absence
- represent the centre at the collaborators' meetings.

## 12.3 Project Management Group (PMG)

The trial is supervised by its Project Management Group (PMG). This consists of the grant holders and representatives from the Trial Office. Observers may be invited to attend at the discretion of the PMG. We will meet/teleconference every six months on average.

## 12.4 Trial Steering Committee (TSC)

The study is overseen by a Trial Steering Committee (TSC). The membership of this Committee is comprised of four independent members along with the Chief Investigator

(Anthony King) or a nominated delegate. The trial sponsors, other TAGS grant-holders and key members of the central office (e.g. the trial manager) can participate in TSC meetings but are not members. The funders will be notified in advance of meetings and a representative invited to attend. Other relevant experts may be invited to attend as appropriate. CHaRT has adopted the TSC Charter adapted from the DAMOCLES Charter for DMCs and suggests to the independent TSC members that they adopt the Terms of Reference contained within. The TSC will meet approximately yearly.

#### 12.5 Data Monitoring Committee (DMC)

An independent Data Monitoring Committee (DMC) will be convened, one of whom is an experienced statistician. The DMC will initially meet to agree its terms of reference, meeting frequency and other procedures. CHaRT has adopted the DAMOCLES Charter for DMCs and suggests to the independent DMC members that they adopt the Terms of Reference contained within.

The committee will monitor the unmasked trial data, serious adverse events and make recommendations as to any modifications that are required to be made to the protocol or the termination of all or part of the trial.

### 13 QUALITY ASSURANCE AND ETHICS

#### 13.1 Research Governance

The trial will be conducted in compliance with the Declaration of Helsinki (2008), the principles of GCP and in accordance with all applicable regulatory guidance, including, but not limited to, the Research Governance Framework.

The trial will be run under the auspices of CHaRT based at HSRU, University of Aberdeen. Compliance with Research Governance will be monitored and CHaRT will provide centralised trial administration, database support and statistical analyses. CHaRT is a registered Clinical Trials Unit with particular expertise in running multicentre RCTs of complex and surgical interventions.

The trial will be monitored to ensure that the study is being conducted as per protocol, adhering to Research Governance, GCP. The approach to, and extent of, monitoring (specifying remote, central and any on-site monitoring) will be specified in a trial monitoring plan determined by the risk assessment undertaken prior to the start of TAGS. All monitoring outcomes will be reported to the sponsor.

#### 13.2 Participant Confidentiality

The trial will comply with the Data Protection Act 1998 and regular checks and monitoring are in place to ensure compliance. Data are stored securely in accordance with the Act and archived to a secure data storage facility. The senior IT manager (in collaboration with the CI) will manage access rights to the data set. Prospective new users must demonstrate compliance with legal, data protection and ethical guidelines before any data are released. We anticipate that anonymised trial data will be shared with other researchers to enable international meta-analyses.

#### 13.3 Approvals

The **Derby 1 Research Ethics Committee** has reviewed this study. We believe this study does not pose any specific risks to individual participants beyond those of any treatment for advanced glaucoma, nor does it raise any extraordinary ethical issues. Annual progress reports and a final report at the conclusion of the trial will be submitted to **Derby 1 Research Ethics Committee** within the timelines defined in the regulations.

Local NHS R&D approvals will be obtained prior to commencement of the trial at the participating sites.

## **14 DATA HANDLING, RECORD KEEPINGS AND ARCHIVING**

Clinical data will be entered into the database by the local clinical teams working in each hospital site, together with data from any questionnaires completed at clinic. Patient questionnaires returned by post to the trial office will be entered there. Staff in the trial office will work closely with local research nurses to ensure that the data are as complete and accurate as possible. Extensive range and consistency checks will further enhance the quality of the data.

All study documentation will be kept for at least 15 years after publication of the study data. Copies of consent forms will be forwarded to Aberdeen on a regular basis. At the end of each participant's follow-up, case report forms and site files will be archived at each site. Paper copies of documentation held in Aberdeen will be archived there.

### **Satellite studies**

It is recognised, that the value of the study may be enhanced by smaller ancillary studies of specific aspects. Plans for these will be discussed in advance with the Project Management Group and ratified by the TSC. REC approval will be sought for any new proposal, if appropriate.

## **15 FINANCING AND INSURANCE**

The trial is funded by a grant awarded by the NIHR Health Technology Assessment programme.

The necessary trial insurance is provided by Nottingham University Hospitals NHS Trust.

## **16 PUBLICATION POLICY**

All RCTs conducted by CHaRT have a commitment to publish the findings of the research. At a minimum this trial will have a results paper published in a peer-reviewed medical/scientific journal. If all grant-holders and researcher staff fulfil authorship rules, group authorship will be used under the collective title of 'the TAGS Group'. If one or more individuals have made a significant contribution above and beyond other group members but where all group members fulfil authorship rules, authorship will be attributed to the named individual(s) and the TAGS Group.

For reports which specifically arise from the trial but where all members do not fulfil authorship rules (for example, specialist sub-study publications), authorship should be attributed to the named individual(s) for the TAGS Group.

To safeguard the integrity of the main trial, reports of explanatory or satellite studies will not be submitted for publication without prior arrangement from the Project Management Group.

We intend to maintain interest in the study by publication of TAGS newsletters at intervals for staff and collaborators. Once the main report has been published, a lay summary of the findings will be sent in a final TAGS Newsletter to all involved in the trial.

Further details on the publication policy can be found in **Appendix D**.

## REFERENCES

1. Resnikoff S, Pascolini D, Etya'ale D, Kocur I, Pararajasegaram R, Pokharel GP, et al. Global data on visual impairment in the year 2002. *Bull World Health Organ* 2004;82(11):844-51.
2. Mitchell P, Smith W, Attebo K, Healey PR. Prevalence of open-angle glaucoma in Australia. The Blue Mountains Eye Study. *Ophthalmology* 1996;103(10):1661-9.
3. Wolfs RC, Borger PH, Ramrattan RS, Klaver CC, Hulsman CA, Hofman A, et al. Changing views on open-angle glaucoma: definitions and prevalences--The Rotterdam Study. *Invest Ophthalmol Vis Sci* 2000;41(11):3309-21.
4. de Voogd S, Ikram MK, Wolfs RC, Jansonius NM, Hofman A, de Jong PT. Incidence of open-angle glaucoma in a general elderly population: the Rotterdam Study. *Ophthalmology* 2005;112(9):1487-93.
5. Bonomi L, Marchini G, Marraffa M, Bernardi P, De Franco I, Perfetti S, et al. Prevalence of glaucoma and intraocular pressure distribution in a defined population. The Egna-Neumarkt Study. *Ophthalmology* 1998;105(2):209-15.
6. Tielsch JM, Sommer A, Katz J, Royall RM, Quigley HA, Javitt J. Racial variations in the prevalence of primary open-angle glaucoma. The Baltimore Eye Survey. *JAMA* 1991;266(3):369-74.
7. Bunce C, Wormald R. Causes of blind certifications in England and Wales: April 1999-March 2000. *Eye* 2007;22:905-11.
8. Bunce C, Xing W, Wormald R. Causes of blind and partial sight certifications in England and Wales: April 2007-March 2008. *Eye (Lond)* 2010;24(11):1692-9.
9. King AJ, Reddy A, Thompson JR, Rosenthal AR. The rates of blindness and of partial sight registration in glaucoma patients. *Eye* 2000;14 ( Pt 4):613-9.
10. Spry PG, Spencer IC, Sparrow JM, Peters TJ, Brookes ST, Gray S, et al. The Bristol Shared Care Glaucoma Study: reliability of community optometric and hospital eye service test measures. *Br J Ophthalmol* 1999;83(6):707-12.
11. Harrison RJ, Wild JM, Hobley AJ. Referral patterns to an ophthalmic outpatient clinic by general practitioners and ophthalmic opticians and the role of these professionals in screening for ocular disease. *BMJ* 1988;297(6657):1162-7.
12. Morley AM, Murdoch I. The future of glaucoma clinics. *Br J Ophthalmol* 2006;90(5):640-5.
13. Burr JM, Mowatt G, Hernandez R, Siddiqui MA, Cook J, Lourenco T, et al. The clinical effectiveness and cost-effectiveness of screening for open angle glaucoma: a systematic review and economic evaluation. *Health Technol Assess* 2007;11(41):iii-iv, ix-x, 1-190.
14. Coffey M, Reidy A, Wormald R, Xian WX, Wright L, Courtney P. Prevalence of glaucoma in the west of Ireland. *Br J Ophthalmol* 1993;77(1):17-21.
15. Elkington AR LJ, MacKean J, Sargent P. 1982;4:31– 40. A collaborative hospital glaucoma survey. *Res Clin Forums*. 1982;4:31– 40.
16. Ng WS, Agarwal PK, Sidiki S, McKay L, Townend J, Azuara-Blanco A. The effect of socio-economic deprivation on severity of glaucoma at presentation. *Br J Ophthalmol* 2010;94(1):85-7.
17. Sheldrick JH, Ng C, Austin DJ, Rosenthal AR. An analysis of referral routes and diagnostic accuracy in cases of suspected glaucoma. *Ophthalmic Epidemiol* 1994;1(1):31-9.

18. Sukumar S, Spencer F, Fenerty C, Harper R, Henson D. The influence of socioeconomic and clinical factors upon the presenting visual field status of patients with glaucoma. *Eye (Lond)* 2009;23(5):1038-44.
19. Fraser S, Bunce C, Wormald R. Risk factors for late presentation in chronic glaucoma. *Invest Ophthalmol Vis Sci* 1999;40(10):2251-7.
20. Fraser S, Bunce C, Wormald R, Brunner E. Deprivation and late presentation of glaucoma: case-control study. *BMJ* 2001;322(7287):639-43.
21. Odberg T. Visual field prognosis in advanced glaucoma. *Acta Ophthalmol* 1987;65 (suppl):27-29.
22. Mikelberg FS, Schulzer M, Drance SM, Lau W. The rate of progression of scotomas in glaucoma. *Am J Ophthalmol* 1986;101(1):1-6.
23. Grant WM, Burke JF, Jr. Why do some people go blind from glaucoma? *Ophthalmology* 1982;89(9):991-8.
24. Wilson R, Walker AM, Dueker DK, Crick RP. Risk factors for rate of progression of glaucomatous visual field loss: a computer-based analysis. *Arch Ophthalmol* 1982;100(5):737-41.
25. Hattenhauer MG, Johnson DH, Ing HH, Herman DC, Hodge DO, Yawn BP, et al. The probability of blindness from open-angle glaucoma. *Ophthalmology* 1998;105(11):2099-104.
26. Parc CE, Johnson DH, Oliver JE, Hattenhauer MG, Hodge DO. The long-term outcome of glaucoma filtration surgery. *Am J Ophthalmol* 2001;132(1):27-35.
27. Oliver JE, Hattenhauer MG, Herman D, Hodge DO, Kennedy R, Fang-Yen M, et al. Blindness and glaucoma: a comparison of patients progressing to blindness from glaucoma with patients maintaining vision. *Am J Ophthalmol* 2002;133(6):764-72.
28. Burr J, Azuara-Blanco A, Avenell A. Medical versus surgical interventions for open angle glaucoma. *Cochrane Database Syst Rev* 2012;9:CD004399.
29. Lichter PR, Musch DC, Gillespie BW, Guire KE, Janz NK, Wren PA, et al. Interim clinical outcomes in the Collaborative Initial Glaucoma Treatment Study comparing initial treatment randomized to medications or surgery. *Ophthalmology* 2001;108(11):1943-53.
30. Comparison of glaucomatous progression between untreated patients with normal-tension glaucoma and patients with therapeutically reduced intraocular pressures. Collaborative Normal-Tension Glaucoma Study Group. *Am J Ophthalmol* 1998;126(4):487-97.
31. Gordon MO, Beiser JA, Brandt JD, Heuer DK, Higginbotham EJ, Johnson CA, et al. The Ocular Hypertension Treatment Study: baseline factors that predict the onset of primary open-angle glaucoma. *Arch Ophthalmol* 2002;120(6):714-20; discussion 829-30.
32. The Advanced Glaucoma Intervention Study (AGIS): 7. The relationship between control of intraocular pressure and visual field deterioration. The AGIS Investigators. *Am J Ophthalmol* 2000;130(4):429-40.
33. Stead R, Azuara-Blanco A, King AJ. Attitudes of consultant ophthalmologists in the UK to initial management of glaucoma patients presenting with severe visual field loss: a national survey. *Clin Experiment Ophthalmol* 2011;39(9):858-64.
34. O'Brart DP, Shiew M, Edmunds B. A randomised, prospective study comparing trabeculectomy with viscocanalostomy with adjunctive antimetabolite usage for the

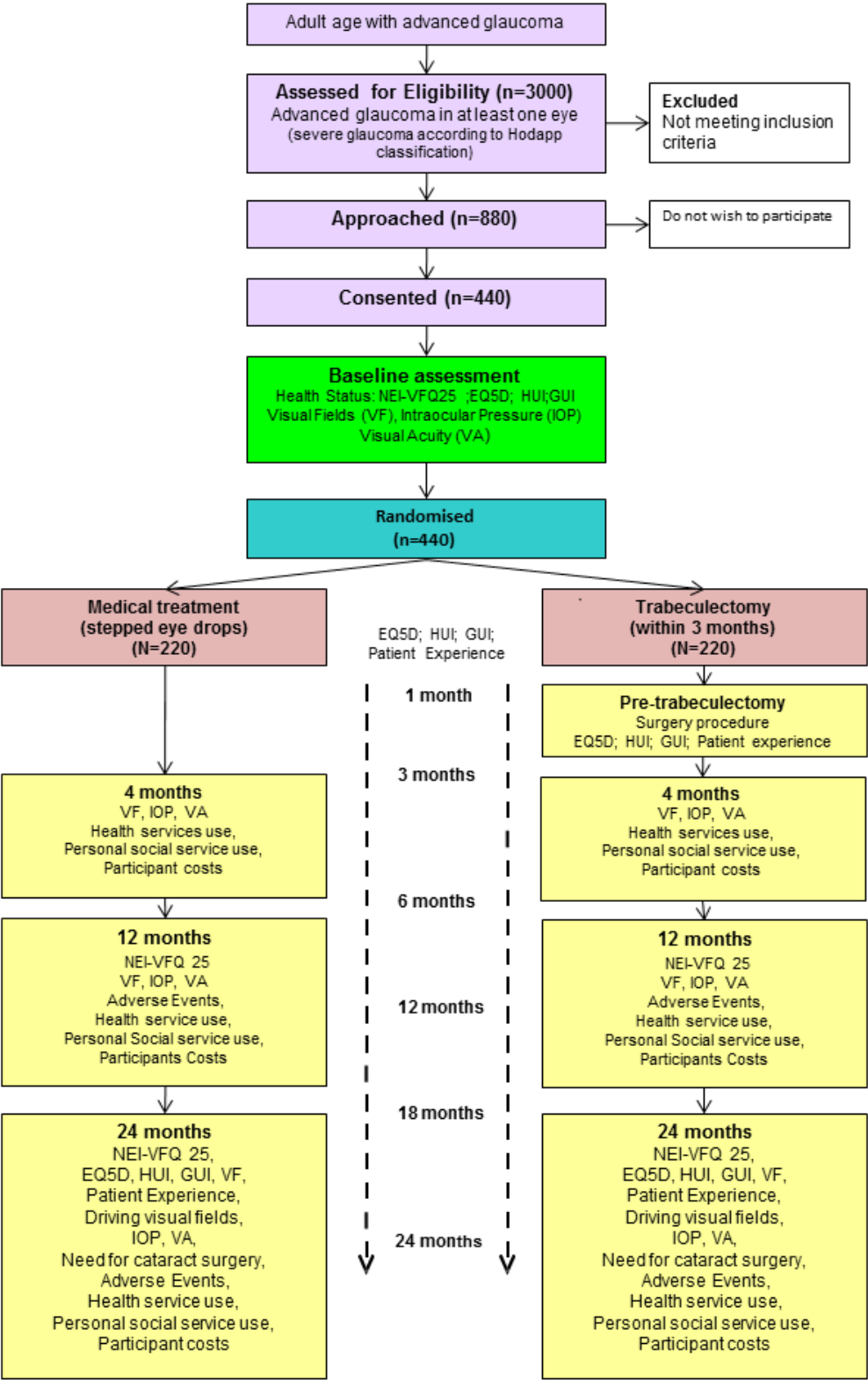


- management of open angle glaucoma uncontrolled by medical therapy. *Br J Ophthalmol* 2004;88(8):1012-7.
35. Bhargava JS, Patel B, Foss AJ, Avery AJ, King AJ. Views of glaucoma patients on aspects of their treatment: an assessment of patient preference by conjoint analysis. *Invest Ophthalmol Vis Sci* 2006;47(7):2885-8.
  36. Glaucoma; Diagnosis and management of chronic open angle glaucoma and ocular hypertension CG85. London: National Institute for Health and Clinical Excellence (NICE), 2009.
  37. Migdal C, Gregory W, Hitchings R. Long-term functional outcome after early surgery compared with laser and medicine in open-angle glaucoma. *Ophthalmology* 1994;101(10):1651-6; discussion 57.
  38. Jay JL, Murray SB. Early trabeculectomy versus conventional management in primary open angle glaucoma. *Br J Ophthalmol* 1988;72(12):881-9.
  39. Smith R. A comparison between medical and surgical treatment of glaucoma simplex- Results of a prospective study. *Transactions of the Ophthalmological Society of Australia* 1968 27:17-29.
  40. DH/HIPD/PHDU. Healthy Lives, Healthy People: Improving outcomes and supporting transparency. In: DoH., editor. London: DoH, 2012.
  41. The Advanced Glaucoma Intervention Study (AGIS): 1. Study design and methods and baseline characteristics of study patients. *Control Clin Trials* 1994;15(4):299-325.
  42. Musch DC, Gillespie BW, Lichter PR, Niziol LM, Janz NK. Visual field progression in the Collaborative Initial Glaucoma Treatment Study the impact of treatment and other baseline factors. *Ophthalmology* 2009;116(2):200-7.
  43. Thorpe KE, Zwarenstein M, Oxman AD, Treweek S, Furberg CD, Altman DG, et al. A pragmatic-explanatory continuum indicator summary (PRECIS): a tool to help trial designers. *J Clin Epidemiol* 2009;62(5):464-75.
  44. Thorpe KE, Zwarenstein M, Oxman AD, Treweek S, Furberg CD, Altman DG, et al. A pragmatic-explanatory continuum indicator summary (PRECIS): a tool to help trial designers. *CMAJ* 2009;180(10):E47-57.
  45. Hodapp E, Parrish R, Anderson D. *Clinical decisions in glaucoma*. St Louis C.V.: Mosby, 1993.
  46. Hyman LG, Komaroff E, Heijl A, Bengtsson B, Leske MC. Treatment and vision-related quality of life in the early manifest glaucoma trial. *Ophthalmology* 2005;112(9):1505-13.
  47. Richman J, Lorenzana LL, Lankaranian D, Dugar J, Mayer JR, Wizov SS, et al. Relationships in glaucoma patients between standard vision tests, quality of life, and ability to perform daily activities. *Ophthalmic Epidemiol* 2010;17(3):144-51.
  48. Paletta Guedes RA, Paletta Guedes VM, Freitas SM, Chaoubah A. Quality of Life of Medically Versus Surgically Treated Glaucoma Patients. *J Glaucoma* 2012.
  49. Wu P, Xi S, Xia H, Lu H, Guo W. Survey on Vision-related Quality of Life and Self-management Among Patients With Glaucoma. *J Glaucoma* 2012.
  50. Gutierrez P, Wilson MR, Johnson C, Gordon M, Cioffi GA, Ritch R, et al. Influence of glaucomatous visual field loss on health-related quality of life. *Arch Ophthalmol* 1997;115(6):777-84.
  51. Jampel HD, Friedman DS, Quigley H, Miller R. Correlation of the binocular visual field with patient assessment of vision. *Invest Ophthalmol Vis Sci* 2002;43(4):1059-67.

52. Nelson P, Aspinall P, Papasouliotis O, Worton B, O'Brien C. Quality of life in glaucoma and its relationship with visual function. *J Glaucoma* 2003;12(2):139-50.
53. Burr JM, Botello-Pinzon P, Takwoingi Y, Hernandez R, Vazquez-Montes M, Elders A, et al. Surveillance for ocular hypertension: an evidence synthesis and economic evaluation. *Health Technol Assess* 2012;16(29):1-271, iii-iv.
54. Prior M, Ramsay CR, Campbell SE, Jankinson D, Asoaka R, Francis J. Theoretical and empirical dimensions of the aberdeen glaucoma questionnaire: a cross sectional survey and principal component analysis. *BMC Ophthalmol* 2013;13:1-11.
55. Chehamzeh J. Assessment of glaucoma: Using patient reported measures in randomised controlled trials. PhD Thesis. University of Aberdeen; 2011.
56. Suner IJ, Kokame GT, Yu E, Ward J, Dolan C, Bressler NM. Responsiveness of NEI VFQ-25 to changes in visual acuity in neovascular AMD: validation studies from two phase 3 clinical trials. *Invest Ophthalmol Vis Sci* 2009;50(8):3629-35.
57. McCulloch P, Altman DG, Campbell WB, Flum DR, Glasziou P, Marshall JC, et al. No surgical innovation without evaluation: the IDEAL recommendations. *Lancet* 2009;374(9695):1105-12.
58. Ergina PL, Cook JA, Blazeby JM, Boutron I, Clavien PA, Reeves BC, et al. Challenges in evaluating surgical innovation. *Lancet* 2009;374(9695):1097-104.
59. Carpenter J, Kenward M. Missing data in clinical trials — a practical guide. In: Research NIh, editor. Birmingham, 2008.
60. White IR, Horton NJ, Carpenter J, Pocock SJ. Strategy for intention to treat analysis in randomised trials with missing outcome data. *BMJ* 2011;342:d40.
61. Emsley R, Dunn G, White IR. Mediation and moderation of treatment effects in randomised controlled trials of complex interventions. *Stat Methods Med Res* 2010;19(3):237-70.
62. National Institute for Health and Clinical Excellence. Guide to the methods of technology appraisal. London: National Institute for Health and Clinical Excellence, 2008.
63. Royal Pharmaceutical Society of Great Britain. *British National Formulary*. London: BMJ Group, 2012.
64. Curtis L. *Unit costs of health and social care 2011*. Canterbury: Personal Social Services Research Unit. University of Kent, 2012.
65. Drummond M, Sculpher M, Torrance G, O'Brien B, Stoddart G. *Methods for the economic evaluation of health care programmes*. 3rd edition ed. New York: Oxford University press, 2005.
66. Philips Z, Ginnelly L, Sculpher M, Claxton K, Golder S, Riemsma R, et al. Review of guidelines for good practice in decision-analytic modelling in health technology assessment. *Health Technol Assess* 2004;8(36):iii-iv, ix-xi, 1-158.
67. Kaltenthaler E, Tappenden P, Paisley S, Squires H. NICE DSU Technical Support Document 13: Identifying and reviewing evidence to inform the conceptualisation and population of cost-effectiveness models. Sheffield: NICE Decision Support Unit, School of Health and Related Research, 2011.

## **APPENDIX A – Study Flow Diagram**

Flow diagram: Treatment of Advanced Glaucoma Study (TAGS): An RCT comparing primary medical treatment with primary augmented trabeculectomy



APPENDIX B – Schedule of Outcomes

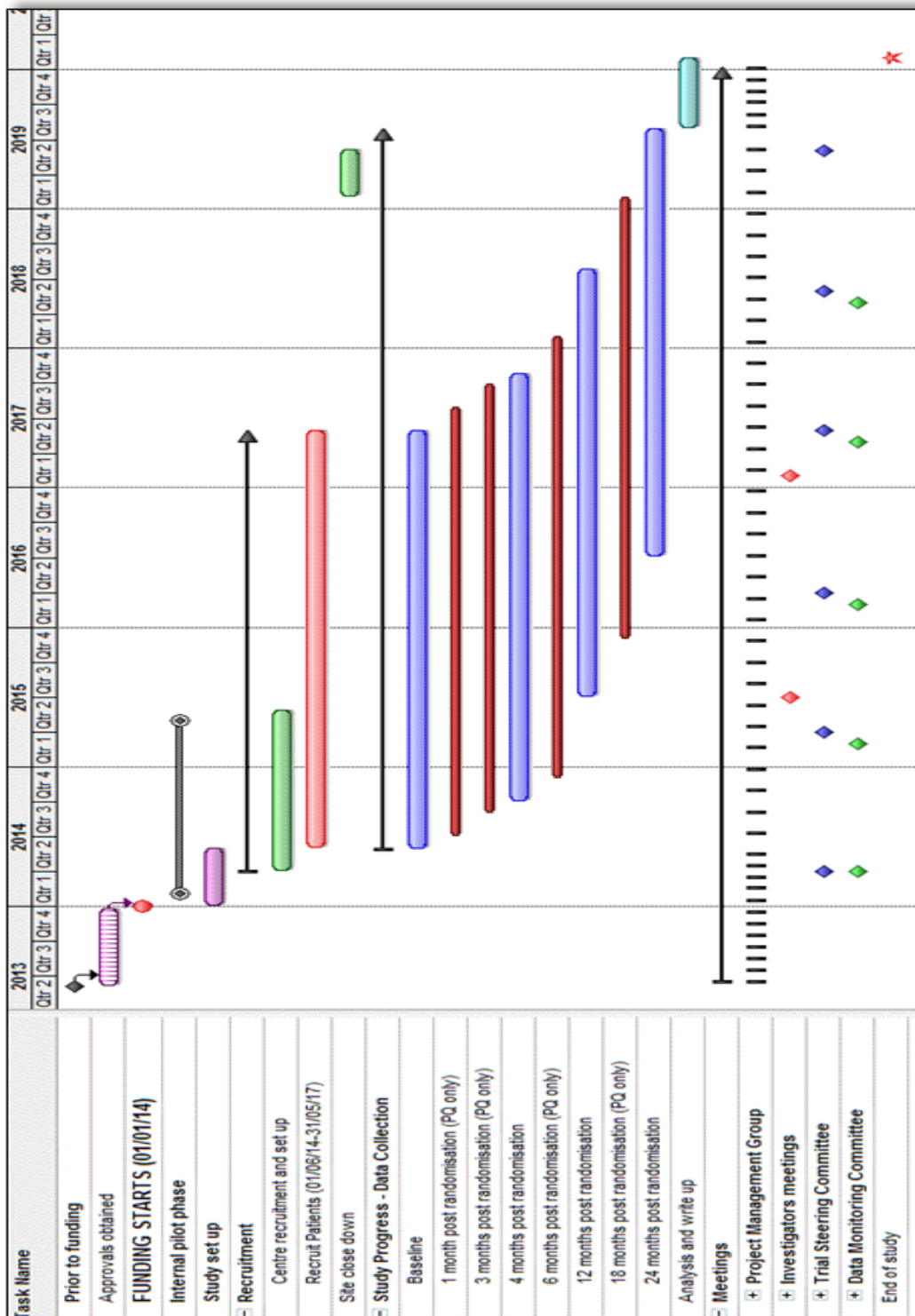
		Post-randomisation (months)
--	--	-----------------------------

	Baseline	1	3	4	6	12	18	24
Medical History	✓							
Consent/Randomisation	✓							
Humphrey Visual Fields (x2)	✓			✓		✓		✓
Esterman Visual Fields	✓							✓
LogMAR Visual Acuity	✓			✓		✓		✓
IOP	✓			✓		✓		✓
Standard clinical examination	✓					✓		✓
NEI - VFQ-25	✓			✓		✓		✓
EQ-5D	✓	✓	✓		✓	✓	✓	✓
HUI-3	✓	✓	✓		✓	✓	✓	✓
GUI	✓	✓	✓		✓	✓	✓	✓
Patient experience questions	✓	✓	✓		✓	✓	✓	✓
Health Care Utilisation				✓		✓		✓
Participant Cost				✓		✓		✓
Participant Time and travel							✓	

\* - additional questionnaire undertaken immediately prior to trabeculectomy surgery in surgery group

The DCE will be elicited at 27 months

## APPENDIX C – GANTT CHART OF STUDY TIMELINES



## APPENDIX D - AUTHORSHIP AND PUBLICATION POLICY FOR THE TAGS STUDY

### AUTHORSHIP POLICY

#### 1. PRINCIPLES OF AUTHORSHIP

The following principles of authorship have been derived from editorial publications from leading journals (see references) and are in accordance with the rules of the International Committee of Medical Journal Editors.

##### a. Group authorship

Group authorship will be appropriate for some publications, such as main reports. This will apply when the intellectual work underpinning a publication 'has been carried out by a group, and no one person can be identified as having substantially greater responsibility for its contents than others'.<sup>1</sup> In such cases the authorship will be presented by the collective title - The TAGS Trial Group - and the article should carry a footnote of the names of the people (and their institutions) represented by the corporate title. In some situations one or more authors may take responsibility for drafting the paper but all group members qualify as members; in this case, this should be recognised using the by-line 'Jane Doe *and* the Trial Group'.<sup>2</sup> Group authorship may also be appropriate for publications where one or more authors take responsibility for a group, in which case the other group members are not authors but may be listed in the acknowledgement (the by-line would read 'Jane Doe *for* the Trial Group').<sup>2</sup>

##### b. Individual authorship

Other papers, such as describing satellite studies, will have individual authorship. In order to qualify for authorship an individual must fulfil the following criteria<sup>1</sup>:

- i. each author should have participated sufficiently in the work represented by the article to take public responsibility for the content.
- ii. participation must include three steps:
  - conception or design of the work represented by the article OR analysis and interpretation of the data OR both; AND
  - drafting the article or revising it for critically important content; AND
  - final approval of the version to be published.

Participation solely in the collection of data is insufficient by itself and those persons who have contributed intellectually to the article but those contributors do not justify authorship may be acknowledged and their contribution described.<sup>1</sup>

##### c. Determining authorship

Tentative decisions on authorship should be made as soon as possible<sup>1</sup>. These should be justified to, and agreed by, the Project Management Group. Any difficulties or disagreements will be resolved by the Steering Committee.

#### 2. AUTHORSHIP FOR PUBLICATION ARISING FROM TAGS

##### a. Operationalising authorship rules

We envisage two types of report (including conference presentations) arising from the TAGS trial and its associated projects:

##### i. *Reports of work arising from the main TAGS trial*

If all grant-holders and research staff fulfil authorship rules, group authorship should be used under the collective title of 'The TAGS Trial Group'; if one or more individuals have made a significant contribution above and beyond other group members but where all group members fulfil authorship rules, authorship will be attributed to 'Jane Doe and the TAGS Trial Group'.

##### ii. *Reports of satellite studies and subsidiary projects*

Authorship should be guided by the authorship rules outlined in Section 1 above. Grant-holders and research staff not directly associated with the specific project should only be included as authors if they fulfil the authorship rules. Grant-holders and research staff who have made a contribution to the project but do not fulfil authorship rules should be

recognised in the Acknowledgement section. The role of the TAGS Trial Group in the development and support of the project should be recognised in the Acknowledgement section. The lead researcher should be responsible for ratifying authorship with the Project Management Group.

For reports which specifically arise from the TAGS trial but where all members do not fulfil authorship rules (for example, specialist sub-study publications), authorship should be attributed to 'Jane Doe for the TAGS Trial Group'. If individual members of the group are dissatisfied by a decision, they can appeal to the Management Group for reconciliation. If this cannot be achieved, the matter should be referred to the Steering Group.

b. Quality assurance

Ensuring quality assurance is essential to the good name of the trial group. For reports of individual projects, internal peer review among members of the Project Management Group is a requirement prior to submission of papers. All reports of work arising from the TAGS trial including conference abstracts should be peer reviewed by the Project Management Group.

The internal peer review for reports of work arising from the TAGS project is mandatory and submission may be delayed or vetoed if there are serious concerns about the scientific quality of the report. The Project Management Group will be responsible for decisions about submission following internal peer review. If individual members of the group are dissatisfied by decisions, the matter may be referred to the Steering Group.

The Project Management Group undertake to respond to submission of articles for peer review at the Project Management Group Meeting following submission (assuming the report is submitted to the trial secretariat at least two weeks prior to the meeting).

## REFERENCES

1. Huth EJ (1986). Guidelines on authorship of medical papers. *Annals of Internal Medicine*, 104, 269-274.
2. Glass RM (1992). New information for authors and readers. Group authorship, acknowledgements and rejected manuscripts. *Journal of the American Medical Association*, 268, 99.

## **APPENDIX E - EXTENDED FOLLOW-UP OF PARTICIPANTS (to 5 years)**

### **Background**

The Treatment of Advanced Glaucoma Study (TAGS) has successfully recruited 453 participants with advanced open angle glaucoma (OAG) presentation at diagnosis. TAGS records, patient reported outcomes (PROMs), clinical outcomes and cost-effectiveness outcomes at 2 years after randomization. This long-term follow-up extension will collect PROMS annually up to 5 years. At 5 years in addition to PROMS data, clinical outcomes (visual acuity (VA), visual field (VF), intraocular pressure (IOP), further surgery, safety) and key treatment costs will be collected. This information will allow more precise estimates of lifetime patient outcomes and cost-effectiveness of the two standard treatments employed by the NHS. Currently, our estimates of effectiveness, cost and cost-effectiveness will be based on 2-year data or on extrapolations from that data. Basing these estimates instead on 5 years follow-up will greatly improve their precision and reliability, allow more robust modelling of cost and outcomes thus providing a more secure basis for NHS decision-making and so improve patient outcomes.

Glaucoma is a potentially blinding, lifelong condition with no cure, affecting 2% of those over 40 years. In the UK it affects over half a million people (1), accounts for 12% of blind registrations (2, 3) is a significant cause of falls (4) road traffic accidents (4) loss of driving licence (5) and loss of independence (4, 6-9). Glaucoma significantly reduces quality of life (QoL), especially in severe disease (10-15). Severe VF loss at diagnosis is the greatest risk factor for lifetime blindness (16-20). Effective primary treatment minimizes the risk of progression (21-23) and blindness. Glaucoma is a substantial burden to the NHS; in England over 1,000,000 outpatient visits per year are glaucoma related (24) and an estimated 11,054 new cases in people aged 40 to 70 annually (24, 25). Up to 39% present with advanced disease in at least one eye (26-31). No effective and efficient screening strategy exists to identify glaucoma early ([www.legacy.screening.nhs.uk/glaucoma](http://www.legacy.screening.nhs.uk/glaucoma)) (25).

Glaucoma requires lifelong follow-up. Demographic changes of an ageing population mean that the number with glaucoma will increase and they will need treatment for longer (32). The Public Health Outcomes Framework for England 2013-2016 made reducing numbers of people living with preventable sight loss a priority (33). The James Lind Alliance (JLA) has identified the following research priorities: “How can glaucoma be stopped from progressing” and “what are the most effective treatments for glaucoma” (<http://www.lindalliance.org/top-tens.asp>).

A Cochrane review (34) of 4 trials of medical versus surgical interventions for OAG (35-38), concluded: “in more severe OAG there is some evidence (35-37) that medication was associated with more progressive VF loss and less intraocular pressure lowering than surgery. The risk of treatment failure was greater with medication than trabeculectomy (OR 3.90, 95% CI 1.60 to 9.53; HR 7.27, 95% CI 2.23 to 25.71)”. The review recommended an RCT comparing modern medical treatment and modern glaucoma surgery is required in people with advanced OAG; TAGS directly addresses this.

NICE guidelines recommend that patients presenting with advanced OAG should be offered primary trabeculectomy but acknowledge poor quality clinical and economic evidence (24). Most ophthalmologists ignore this, due to the poor evidence base and risk of surgical complications (39).

As OAG progression is slow, it may take many years for the differences of treatment choices to be revealed. This is particularly important in patients with advanced OAG who have no visual reserve.

### **Justification for extended follow-up period**



The median age of glaucoma diagnosis in TAGS is 69 years. Their current average projected life-expectancy is 15 years (<https://www.ons.gov.uk/peoplepopulationandcommunity/birthsdeathsandmarriages/lifeexpectancies/bulletins/nationallifetablesunitedkingdom/previousReleases>).

Extended follow-up will reveal long-term clinical and patient reported outcomes and inform the cost-effectiveness of early surgery versus medical treatment. We will also address one of the research priorities identified in the 2017 NICE glaucoma guidelines i.e. which QoL measures best reflect changes in glaucoma status(40).

TAGS will follow-up participants for 2 years but the long-term performance of therapies is uncertain. Several factors lead to outcomes changing between 2 and 5 years:

- Cataract formation increases after trabeculectomy (34, 41, 42) more than with medical treatment (34). Cochrane reported cataract extraction was 3 times greater with surgery at 3 years, and 4 times greater at 5 years (34, 41). Cataract worsens VF (41) and visual acuity (VA) both of which affect QoL. Cataract extraction improves VF (41) performance, visual acuity and QoL measures (41, 43). But, cataract surgery may cause surgery failure (44-47), and increase intraocular pressure (IOP), VF loss and need for additional glaucoma treatment (44). The additional cost of cataract surgery and further treatments for trabeculectomy failure will affect the cost-effectiveness of interventions.
- VF is the main measure of glaucoma progression. VF assessment is affected by VF variability, which is high at 2 years but variability will decrease by repeated testing at 5 years (48). In more advanced OAG there is a significant divergence in VF function between medical and surgery treatment groups at 5 years (49). The inherent variability of VF measurement may prevent accurate evaluation of differences in treatment on VF progression (50, 51), being possible until 5 years (48, 49). There are also clinical arguments for longer-term information:
  - Patients presenting with glaucoma on average live considerably longer than 2 years so longer term outcomes are essential to inform patient expectation and treatment choice. Recent patient focus group feedback has indicated that awareness of long-term outcomes is essential to inform their treatment choices.
  - The effects of medication non-adherence and requirement for surgery in those treated medically will be clearer at 5 years (52)
  - Safety is a concern for choosing primary surgery (39, 53). There are specific long-term complications associated with trabeculectomy (e.g., ocular infections, hypotony). The long-term risk of surgery will be important to inform clinicians, patients and cost-effectiveness.

We believe the treatments will be relevant to the NHS for many years to come. Information from 5 year follow-up would better inform UK decision-makers and when added to the existing Cochrane review, provide stakeholders worldwide with the best available evidence on outcomes of medical versus surgical interventions for OAG (34). Specifically, extension of follow-up will generate further knowledge on:

1. QoL change through PROMs
2. Patients preference for treatment
3. Identification of the most effective PROM tool to measure change in glaucoma status over time
4. Cost of interventions, cost-effectiveness and measures of effectiveness reported in terms of QALYs
5. Lifetime cost-effectiveness estimates more accurately modelled from 5 year outcomes

6. Long-term clinical outcomes – IOP lowering; VF change; VA change; need for further interventions
7. Long-term safety
8. Incidence of visual disability, including time to loss of driving vision, blindness and visual status at death or end of follow-up
9. Incorporation of TAGS data into a Cochrane review(54)

**REDUCTION OF SIGHT LOSS:** The most important impact will be reduction in sight loss. At present both treatments are used and one is less good than the other. Knowing which the better long-term option is means patients will no longer experience unnecessary vision loss because they have been unknowingly allocated to the worse of the two treatment options. It will also provide an evidence-based evaluation of the true risk of blindness occurring in patients presenting with advanced OAG from the disease or as a result of treatment. Vision status at time of death will be recorded in those deceased prior to the end of the 5 years.

**CLINICAL OUTCOMES:** As frequency of VF loss increases with time it is more likely to occur after 2 years of follow-up (48), indicating which treatment choice minimizes further VF loss. VA will be affected by cataract formation, cataract surgery and VF progression all of which are likely to be different between groups beyond 2 years. No long-term outcomes are available for advanced glaucoma. Five year outcomes will identify and quantify any treatment differences more accurately than at 2 years. IOP and need for drops or intervention to control IOP will also be collected and this will vary between groups with time (37).

**SAFETY OUTCOMES:** The major obstacle to the adoption of current NICE guidelines for primary surgery in advanced glaucoma are concerns over the safety of surgery (39). There are specific complications that may appear years after trabeculectomy, e.g. infection, cataract, hypotony. Long-term outcomes will provide comprehensive evidence to indicate the true risk associated with trabeculectomy and other interventions used. This information is essential to ensure the conclusions of TAGS are adopted by the clinical community and provide important evidence to inform patient treatment choice.

**PATIENT REPORTED OUTCOMES:** Outcomes at 5 years using EQ-5D-5L, HUI-3, VFQ-25 and GUI will be collected. This will allow comparison between PROM tools and explore the relationship between PROMs and clinical outcomes to identify the best tools to measure change in glaucoma status. The results of this evaluation will ensure the most sensitive tool will be used in future glaucoma trials thus reducing trial and patient burden and fulfilling a research priority of the 2017 NICE glaucoma guidelines (40).

**INFORM PATIENT CHOICES:** glaucoma treatment is a lifelong reality for patients – awareness of the long-term outcomes and risks of treatment for advanced glaucoma will inform patients understanding of the long- term differences in outcomes between the two treatment choices and inform their expectations of treatment. Specifically, information in terms of retention of vision, life-time risk of blindness, QoL and complications of treatment. Modelling of outcomes will further inform them of the likely lifetime outcomes of treatment choices.

**COST OF INTERVENTIONS:** Collection of outcomes at 5 years will greatly improve the cost estimates for managing advanced glaucoma and the longer-term consequences within TAGS. This will allow more robust estimates of cost-effectiveness of the treatments to be established. QALY value estimation: From 5 years PROMS, utility values will be generated and QALYs estimated that more accurately reflect lifetime values for patients with advanced OAG allowing differentiation between the treatment options being tested.

**COST-EFFECTIVENESS MODELLING:** Blindness is costly for health and social services but this is only a small component of the total costs to society (3, 55, 56). With respect to health services, those with advanced OAG are costly and require proportionately higher use of

resources in terms of visit frequency, glaucoma medications and surgery required (57) compared with less severe disease.

Data available up to 5 years post randomisation will be used in a lifetime model of cost-effectiveness for patients with advanced OAG. The model will simulate patient pathways from randomization until death. Survival analysis methods will be used to generate transition probabilities for cataract surgery and disease progression (i.e. transiting to unilateral or bilateral blindness).

**INFORM CLINICAL GUIDELINES AND CLINICAL PRACTICE:** Long-term outcomes will carry much more weight in informing clinical practise making them more likely to be adopted. The long-term outcomes of TAGS will be incorporated into national glaucoma guidelines such as NICE and The European Glaucoma Society guidelines providing guidance on best evidence based practise for patients presenting with advanced OAG.

**ADDRESS PUBLIC HEALTH PRIORITIES:** The Public Health Outcomes Framework for England 2013-2016 made reducing numbers of people living with preventable sight loss a priority (33). Long-term follow-up of the TAGS cohort will identify which treatment option is best at preventing vision loss thus directly addressing this public health priority.

**ADDRESS JAMES LIND ALLIANCE PRIORITIES:** The JLA has the research priorities “How can glaucoma be stopped from progressing” and “what are the most effective treatments for glaucoma” (<http://www.lindalliance.org/top-tens.asp>). Long-term follow-up directly addresses these questions for those most likely to progress to blindness (16).

**UPDATE COCHRANE REVIEW:** Previous glaucoma surgery trials have reported outcomes at 5 years (37, 51, 58) and beyond (50, 51, 59, 60). Inclusion of the 5 year TAGS outcome will further inform the Cochrane review in evaluating the benefits of medical versus surgical interventions in patients with OAG and specifically fulfils a Cochrane research recommendation to evaluate treatment in patients presenting with advanced OAG.

## **Methods**

TAGS participants who consented to long-term follow-up in the event that funding was secured will be asked to complete a questionnaire at yearly intervals starting at 3 years after randomisation and continuing to 5 years after randomisation (3 questionnaires in total).

The TAGS Study Office will either post the 3 and 4 year questionnaires to participants or phone them to collect the data. The questionnaire at each time-point will be identical and collect the same patient-reported outcome measures used in TAGS: NEI-VFQ25, EQ-5D-5L, HUI3, GUI, patient experience, health services use and personal social services use.

At 5 years the following data will be collected when participants attend for a clinic visit: Visual field mean deviation (MD) from 2 SITA-Standard visual field tests (if a reliable SS-VF has been performed within 6 months of the 5 years follow-up clinic visit ( 5 years +/- 6months) this can be considered as one of the 5 years VF tests); intraocular pressure (IOP) collected as per section 6.4.6 of TAGS protocol; best-corrected LogMAR visual acuity; need for cataract surgery; need for trabeculectomy; need for drops. Adverse events and hospital visits related to glaucoma treatment since the last TAGS study visit will also be recorded. All clinical outcomes will be recorded on a trial specific CRF. Figure 1 displays the long-term follow-up study flow diagram. Participants who do not attend clinic for the 5 year clinic visit will receive the 5 year questionnaire by post or data will be collected over the telephone.

During the extended follow-up phase the same efficient retention system used in TAGS will be employed to ensure questionnaire return rates are maximised. This involves sending a reminder letter and further questionnaire three weeks after the original questionnaire is issued and not returned, followed by a postal or phone call reminder for continuing non-responders.

Loyalty and interest in the long term follow-up study will be maintained by continuing to send newsletters to trial participants.

Participants who did not consent to be contacted in the future for long term follow-up or who had previously withdrawn from TAGS will be excluded from the long term follow-up study.

### **Primary outcome**

The primary outcome for the main TAGS trial is the National Eye Institute Visual Function 25-item (NEI-VFQ25) score at 24 months. In this long-term follow-up the primary outcome will be the NEI-VFQ25 score at 5 years.

Most TAGS patients consented to extended follow-up (see Figure 1). Participant retention and completeness of data rates are very high (>85%). We expect retention to remain high, as advanced OAG patients require lifelong follow-up at hospital eye services. We estimate, given current projections, TAGS will have data on approximately 350 participants at 5 years.

### **Secondary outcomes**

Patient-centred (at 3, 4 and 5 years):

- In addition to the NEI-VFQ25 patient-reported health status as measured by EQ-5D (5-level), HUI-3, GUI, NEI-VFQ25 (Please see Figure 1 for schedule)
- Patient experience “Do you think your glaucoma is getting worse”

Clinical (at 5 years):

- Visual field mean deviation (MD) changes
- Esterman visual field to assess visual standards for driving
- Intraocular pressure (IOP)
- LogMAR visual acuity change
- Need for cataract surgery
- Safety
- In those deceased prior to the end of the 5 year follow-up vision status at the most recent clinical follow-up will be recorded.

Economic (from PROMS and 5 year medical notes review):

- Incremental costs to NHS, personal social services and patients
- Incremental QALYs (based on responses to EQ-5D-5L, HUI-3 and glaucoma utility index
- health services use and personal social services use

Robust estimates of cost-effectiveness of the treatments to be established from this data. QALY value estimation: From 5 years PROMS, utility values will be generated and QALYs estimated that more accurately reflect lifetime values for patients with advanced OAG allowing differentiation between the treatment options being tested.

### **Safety**

As participants have completed the main trial, in the extended follow-up we will only collect data about the safety events detailed in section 8.0 of the trial protocol as an outcome measure recorded on the trial case report forms. All deaths during extended follow-up will continue to be recorded on the SAE form and data from the participant's last available clinic visit before their death will be collected and added to the trial database. This should include results from the most recent visual field and visual acuity tests.

### **Analysis**

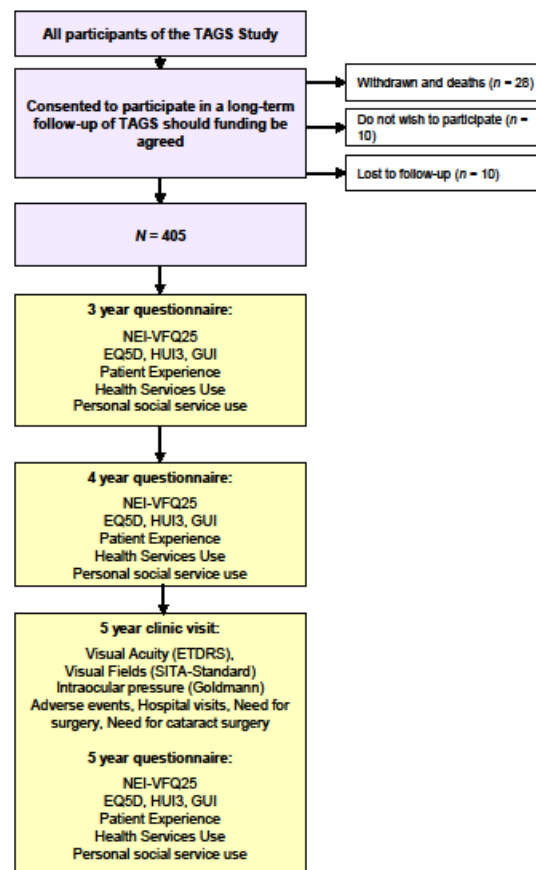
The additional follow-up will permit an extension of the linear regression models developed from the full trial's powered analysis (Section 9.0 and Statistical Analysis Plan). This will include a comparison of the primary outcome with data up to 5 years post-randomisation. We will also explore the profile of primary outcome over time by analysing repeated measures using a linear mixed model. Secondary outcomes will be analysed using a similar strategy with

models suitable for the outcome (i.e. logistic regression for dichotomous outcome need for cataract surgery at 5 years).

**Management**

Trial management, data collection and analysis will be undertaken in the TAGS Trial Office, HSRU, University of Aberdeen, under the supervision of the TAGS Project Management Group. This group consists of the grant holders and representatives from the Study Office. Additional data collection at 5 years will be conducted at current recruitment centres as and when participants attend for their 5 year clinic visit (this may be their annual glaucoma review).

Figure 1: Flow diagram illustrating the TAGS long-term follow-up



## APPENDIX F: ADVANCED GLAUCOMA GENETIC SCREENING SATELLITE STUDY

### **Background**

There is no single definitive biomarker for glaucoma and diagnosis focussed on assessing clinical features and evaluation of the optic nerve is central to case identification. In the early stages of glaucoma there are overlapping features with healthy optic nerves which makes it a difficult disease to diagnose early requiring ongoing, costly monitoring of patients for progressive optic nerve degeneration. Even when a diagnosis of glaucoma is made the rates of disease progression vary widely between individuals and surveillance techniques can require a significant period of follow-up to adequately differentiate patients in whom progressive optic neuropathy is slow (lower-risk of visual loss) from those with more rapid progression (higher-risk of visual loss). The ability to predict progression remains relatively crude which leads to delays in treatment escalation for high-risk individuals and the burden of overtreatment of lower risk cases. Better strategies to identify high-risk individuals are urgently needed and given the fact that primary open angle glaucoma (POAG), the most common type of glaucoma, is one of the most heritable human diseases, genetic risk profiling is an attractive solution.

Early age at onset of primary open-angle glaucoma (POAG) endo-phenotypes tend to be more severe and are more likely to segregate in an autosomal dominant fashion (Wiggs *et al.*, 1996; Turalba and Chen, 2008). POAG is genetically heterogeneous, and at least 16 loci contributing to susceptibility have been identified in familial linkage studies. Of these, only 5 genes have been isolated in POAG: *myocilin* (Stone *et al.*, 1997), *optineurin* (Rezaie *et al.*, 2002), *WDR36* (Monemi *et al.*, 2005), *NTF4* (Pasutto *et al.*, 2009) and *TBK1* (Fingert *et al.*, 2011). More recently, genome-wide association studies (GWAS) using SNP (single nucleotide polymorphism) microarrays have begun to shed light on the common genetic variants which despite a smaller clinical effect on the risk of developing POAG are significantly enriched in glaucoma patients (Thorleifsson *et al.*, 2010; Burdon *et al.*, 2011). Genome-wide association studies (GWAS) examine hundreds of thousands to millions of SNPs densely spaced across the entire human genome. The large number of hypothesis tests in a GWAS creates a burden for multiple testing adjustments, and typically requires a stringent cut-off for declaring statistical significance. A well-accepted genome-wide significance level is a p-value of  $p < 5 \times 10^{-8}$ , assuming one million independent tests in the human genome. As a result, GWAS of complex human diseases usually requires large cohorts because these diseases involve many different genes, each responsible for only a small genetic effect. There is emerging evidence that combining individual risk alleles into a 'genetic risk score' could have clinical predictive value of raised intra-ocular pressure (IOP) and the development of POAG

(Khawaja *et al.*, 2018). There is also developing evidence for a role for mitochondrial DNA (mtDNA) mutation in the development of POAG (Sundaresan *et al.*, 2014).

Patients presenting with advanced disease and a severe ocular phenotype are more likely to be genetically enriched and facilitate the identification of which genetic factors are driving disease (Souzeau *et al.*, 2013; Zhou *et al.*, 2017). The Australian and New Zealand Registry of Advanced Glaucoma (ANZRAG) is the largest genetic repository of selected individuals with severe glaucoma (Souzeau *et al.*, 2013). Using conventional sequencing of myocilin in this cohort demonstrated that the prevalence of myocilin mutations in advanced POAG patients (4.2%) is significantly higher ( $P = 0.02$ ) than in nonadvanced POAG patients (1.5%) in the Australian population (Souzeau *et al.*, 2013). The data demonstrate that myocilin mutations are associated with severe, potentially blinding glaucoma with a prevalence 3 times what is found in non-severe glaucoma cases. The Treatment of Advanced Glaucoma Study (TAGS) (<http://www.isrctn.com/ISRCTN56878850>) aims to identify the best treatment option for patients who present with advanced glaucoma. The TAGS cohort of patients represents a unique opportunity to further explore the genetics of patients with advanced glaucoma. By selecting for only the most severe POAG disease phenotype, the ANZRAG studies have enriched their case cohort for genetic causes of POAG with higher penetrance. This strategy maximises the ability to identify disease-causing variants and has been valuable for discovering common disease alleles with modest cohort sizes; the TAGS cohort provides a similar population to profile genetic risk. Beyond genetic risk profiling these combined genetic techniques can also identify pathways and novel therapeutic targets to improve treatment beyond targeting intra-ocular pressure.

## **Aim**

The overall aim of this study is to characterise the genetic basis of advanced POAG in the TAGS cohort using several complimentary genetic strategies: GWAS, whole exome-sequencing (WES) and mitochondrial genome sequencing.

## **Study Design and Methodology**

Patients with advanced glaucoma who have participated in the Treatment of Advanced Glaucoma Study (TAGS) and who have agreed to be approached for participation in further TAGS-related research will be recruited. At a scheduled clinical visit, the patients will be invited to contribute a blood or saliva sample for genetic studies. Samples (anonymised with the TAGS ID) will be sent using the Royal Mail Safebox® pre-paid delivery boxes with no patient identifiable data attached. The samples will be stored at Ulster University (with Prof



Willoughby) for DNA extraction and genetic analysis. The clinical data already collected on the TAGS participants will be transferred securely from the TAGS clinical database to Prof Willoughby for analysis when the genetic experiments are performed. DNA will be extracted from venous blood or saliva samples for analysis which will include several genetic tests performed in Ulster University and using academic and commercial genetic testing.

During COVID recruitment to the genetics sub-study was halted and when it restarted many sites were unable to see participants in hospital for COVID safety reasons, so recruitment to the Genetics sub-study was negatively impacted.

Now that more participants are being seen at sites, we have found that many participants do not have a scheduled hospital appointment within the Genetics sub-study time frame so would potentially not be approached for participation. To address this, any LTFU participants who gave consent to be approached about further research can also be sent the PIL and then contacted by phone by the sites. Those participants interested and who consent to contribute a saliva sample, the verbal consent form will be completed by the RN during the call. A copy of the consent form and a saliva kit will then be sent to the participant. The saliva kit will be supplied with a Royal Mail safe box to return it to Ulster University for processing.

**Objective 1: Understanding the contribution of common variants to the development of POAG and the prediction of high-risk phenotypes.**

SNP genotyping will be performed on the Illumina Infinium Human CoreExome v1.2 BeadChip by a commercial provider e.g. LGC Group (<http://www.lgcgroup.com/>). The choice of this array was based on cost, coverage and population considerations. HumanCore-24 BeadChips are a cost-effective platform for large-scale genotyping studies and provide a powerful backbone for imputation. The Illumina Infinium Human CoreExome v1.2 BeadChip contains more than 240,000 highly informative genome-wide tag single nucleotide polymorphisms (SNPs) and over 20,000 high-value markers, including insertions/deletions (indels) and updated exome focused content which will allow us to directly evaluate low frequency and rare coding variants.

Experience with genome wide association studies (GWAS) has shown that increasing statistical power is critical to making discoveries. In individual GWAS, associated variants may often show suggestive evidence of trait association, but not at a significant level. By combining lists of results from genomic studies, we expect that truly associated variants will rise closer to the top of a combined list. Anonymised genetic and clinical data will be contributed to glaucoma genetics research consortia in the UK and Internationally: UK Glaucoma Genetics Consortium (UKGGC) and the International Glaucoma Genetics

Consortium (IGGC) to guide collaborative interactions for gene discovery to aid the personalised management of glaucoma. Collaborative efforts and data sharing are required to maximise the chance of identifying true genetic variants related to glaucoma risk and to assess new models of glaucoma risk prediction (Khawaja *et al.*, 2018). Therefore, we will engage and contribute the GWAS data from the TAGS cohort in collaboration to share results from genome-wide association studies of glaucoma and related traits to enable new discoveries. The current IGGC consists of over 7000 POAG cases and 40,000 controls (NEIGHBORHOOD, UK and ANZRAG cohorts) (Souzeau *et al.*, 2011; Hysi *et al.*, 2014; Ozel *et al.*, 2014; Khawaja *et al.*, 2018). Within these cohorts there are a subset of cases with advanced POAG which will be used to develop genetic risk models: UK (332 cases) and ANZRAG (1734 cases). The contributing genetic profile of the TAGS cohort will be built into genetic prediction models which can predict and direct scarce NHS resources to: 1) predicting patients at risk of advanced glaucoma; 2) improved case identification in the community; 3) identifying patients at increased risk of disease progression requiring more aggressive, sight-saving treatment. This approach would facilitate personalised treatment approaches and the rational allocation of resources through clinical screening and timely treatment in high-risk patients, with reduced clinical monitoring costs in lower risk groups.

**Objective 2: Understanding the contribution of rare variants to the development of POAG and the prediction of high-risk phenotypes: identification of new glaucoma genes.**

Epidemiological evidence has demonstrated a strong genetic component to POAG with a heritability of 0.81 (Charlesworth *et al.*, 2010) and a 9.2-fold familial increase in disease risk among first-degree relatives of an affected individual (Wolfs *et al.*, 1998). Highly penetrant Mendelian mutations in genes discovered to date only account for around 5% of all cases of POAG (Gemenetzi, Yang and Lotery, 2011). GWAS, assuming a common disease, common variant model, has been successful in POAG with several disease associated genes being discovered (Thorleifsson *et al.*, 2010; Burdon *et al.*, 2011). However, the greatest risk effect of any disease associated SNP is substantially less than 2-fold in magnitude and many people without POAG also carry disease-associated alleles while never developing the condition, indicating that these SNPs are associated risk factors for POAG, but are not enough to cause disease. SNP microarrays are less suited to the evaluation of rare variants, which may account for a significant portion of the missing heritability (Manolio *et al.*, 2009). Next-generation sequencing offers new ways to identify rare disease-associated variants with fewer restrictions than traditional linkage studies, which generally require large pedigrees. Some rare variants are likely to have larger effect sizes than common variants (Bansal *et al.*, 2010) and thus are

more likely to initiate disease. In terms of clinical application, rare variants may have much greater positive predictive values than associated SNPs from GWAS. Given the TAGS cohort are likely to harbour low frequency variants of intermediate effect and rarer high-risk alleles (e.g. myocilin p. Gln368Ter carriers) an exome sequencing strategy will be employed (Bamshad *et al.*, 2011). The drawback to rare variant analysis is the need for large sample sizes potentially in the magnitude of thousands to achieve statistical significance at a genome-wide level for the discovery a single causative gene. Using even the economical next-generation sequencing technique of whole exome sequencing (WES), the current costs and bioinformatics challenges of this venture are not trivial. Phenotypic enrichment for severe POAG and WES in a subset of the ANZARG cohort (cases = 122 and controls = 103) has identified several biological processes which likely contribute to pathogenesis of POAG (Zhou *et al.*, 2017). Focussing on advanced disease and precise endophenotype characterization in this study allowed for significant findings using a system-based analysis approach. There was an enrichment of genes involved in the unfolded protein response in high tension POAG; this pathway is targetable with potential new drugs and chaperones which may have benefit in POAG (Zhou *et al.*, 2017). Extreme phenotypic enrichment is a great advantage of the ANZRAG database and potentially in the TAGS cohort to identify new genes and pathways involved in the development of POAG (Zhou *et al.*, 2017). Prof Willoughby in collaboration with Prof Jamie Craig is currently performing WES of a cohort of UK POAG cases (n=100) and controls (n=100). Given the advanced nature and phenotypic enrichment in the TAGS cohort, WES is likely to highlight rare alleles related to POAG risk and identify new glaucoma genes for study.

Exome or deep sequencing is becoming more mainstream and there have been some early studies in glaucoma showing positive findings (Ferre-Fernández *et al.*, 2017; Zhou *et al.*, 2017). Although challenging using deep sequencing to identify rarer variants of larger effect sizes may identify the missing heritability of POAG and it is widely considered that advanced or extreme phenotypes will be enriched for rarer variants and an ideal starting point for these types of studies (Manolio *et al.*, 2009; Zhou *et al.*, 2017). Whole exome sequencing (WES) will be outsourced to a commercial provider to maximise resource utilisation (e.g. Novogene/LGC) and the Illumina WES workflow will be followed and the specific work-flow will maximise sample sequencing with at least x50 read depth.

**Objective 3: Understanding the role of mitochondrial genome variation in the development of advanced POAG.**

The Willoughby group have previously published mitochondrial genome sequencing in glaucoma in a limited number of patients (Sundaresan *et al.*, 2014) and have a dedicated workflow and analysis platform which includes LR-PCR of the mtDNA genome, Nextera library preparation and Illumina sequencing. Using this approach, the mitochondrial genome has been sequenced in 100 POAG cases (mixed severity) and controls and there is an enrichment of mitochondrial DNA (mtDNA) variants in the POAG cohort. All sequence variants will also be compared with publicly accessible MITOMAP (<http://www.mitomap.org>) which contains 46,000 mtDNA genomes. The level of mtDNA variation in a cohort with advanced POAG like TAGS is relevant to understand the role of mtDNA in disease pathogenesis but because of the growing implication of mitochondrial dysfunction in the pathogenesis of glaucoma (Lascaratos *et al.*, 2012); therapeutic approaches that target mitochondria may provide a means of protecting the trabecular meshwork and optic nerve (Noh *et al.*, 2013).

### **Primary outcome**

To characterise the genetic basis of glaucoma in the TAGS cohort.

### **Secondary outcomes**

To contribute to the overall GWAS data on POAG via the UK Glaucoma Genetics Consortium (UKGGC) and the International Glaucoma Genetics Consortium (IGGC) and so support collaborative interactions for gene discovery to aid the personalised management of glaucoma.

To determine the role of rarer, genetic variation to the development of glaucoma.

To understand the role of mitochondrial mutations in glaucoma pathogenesis.

To utilise these novel genetic findings as diagnostic and prognostic markers to deliver personalised and stratified medical care. Genetic information could ultimately be integrated into service delivery and glaucoma care models.

### **Statistical Analysis**

#### *GWAS and Genotyping*

GWAS quality control will be performed following standard protocols. SNPs will be excluded based on low genotype call rate or extreme deviation from Hardy-Weinberg equilibrium. Samples will be excluded based on low genotype call rate, extreme heterozygosity or outlying ancestry. Samples will then be pre-phased and imputed up to the Haplotype Reference Consortium panel to maximise coverage of variation in European ancestry populations. After

imputation, each common SNP (minor allele frequency  $\geq 1\%$ ) will be tested for association with adjustment for covariates including age and sex, and other clinically relevant confounders. Lower frequency coding variants (minor allele frequency  $< 1\%$ ) will be tested for association in aggregate with the same outcome via gene-based analyses (burden test and dispersion test) in a linear mixed model, with adjustment for covariates as described above. Association of SNPs with gene expression will be evaluated using the NCBI GTEx eQTL browser (<https://www.gtexportal.org/home/>). In addition, the Willoughby group has an RNA-Seq dataset from normal trabecular meshwork cells. This transcriptome data has been analysed using Partek Genomics Suite and key pathways identified using Ingenuity® Pathway Analysis. Gene expression data will be correlated with significant SNP signals from GWAS and individual genotyping studies. The identified genes will be loaded into Cytoscape software<sup>25</sup> for visualisation and analysis of networks. Data will also be analysed using the Gene Set Enrichment Algorithm (GSEA), part of the GenGen suite (<http://openbioinformatics.org/gengen>) and uses the SNP/Gene annotation from UCSC Genome Browser and data from Gene Ontology, BioCarta and KEGG, and the Gene Set-based Analysis of Polymorphisms algorithm (GeSBAP; <http://bioinfo.cipf.es/gesbap/>). The analysis of gene networks and pathways can enhance the ability to detect molecular pathways implicated in the pathogenesis of glaucoma which would otherwise be missed by single-locus analyses.

#### *Whole exome sequencing*

Sequencing data will be analysed using BaseSpace (Illumina) and GATK (<https://software.broadinstitute.org/gatk/>) for variant calling and variant call files (VCF) tools and Annovar for downstream analyses. Annotated variants will be assessed on the basis of: allele frequency by interfacing with 1000 Genome, HapMap, and NHLBI ESP 6500; impact as predicted by MutationTaster, PolyPhen, and SIFT; distance to nearest splice site (UCSC); predicted impact on splicing (NNSplice); if the variant occurs in a microRNA gene (miRbase) or region targeted by microRNA (TargetScan); and lastly, tissue expression (NCBI Unigene EST Profile).

#### *Mitochondrial genome sequencing*

Mitochondrial data sequencing data will be analysed using mtDNA-server (<https://mtdna-server.uibk.ac.at/index.html>) which provides sequencing data analysis of human mitochondrial DNA in the cloud. All sequence variants will also be compared with publically accessible databases: NCBI GenBank database, MITOMAP at <http://www.mitomap.org>, and Human Mitochondrial Genome Database (mtDB) at <http://www.genpat.uu.se/mtDB/>, dbSNP, ESP

dataset and the 1000 Genomes. Previously reported pathogenic nonsynonymous mtDNA variants will be catalogued from these mitochondrial databases and literature. Previously unreported or novel nucleotide changes will be classified as pathogenic by considering the conservation and deleterious structural effects of amino acid substitutions on protein function using PolyPhen-2 (Polymorphism Phenotyping v2; <http://genetics.bwh.harvard.edu/pph2/>), Sorting Intolerant from Tolerant (SIFT; <http://sift.jcvi.org/>) and Mutation Taster (<http://www.mutationtaster.org/>) algorithms.

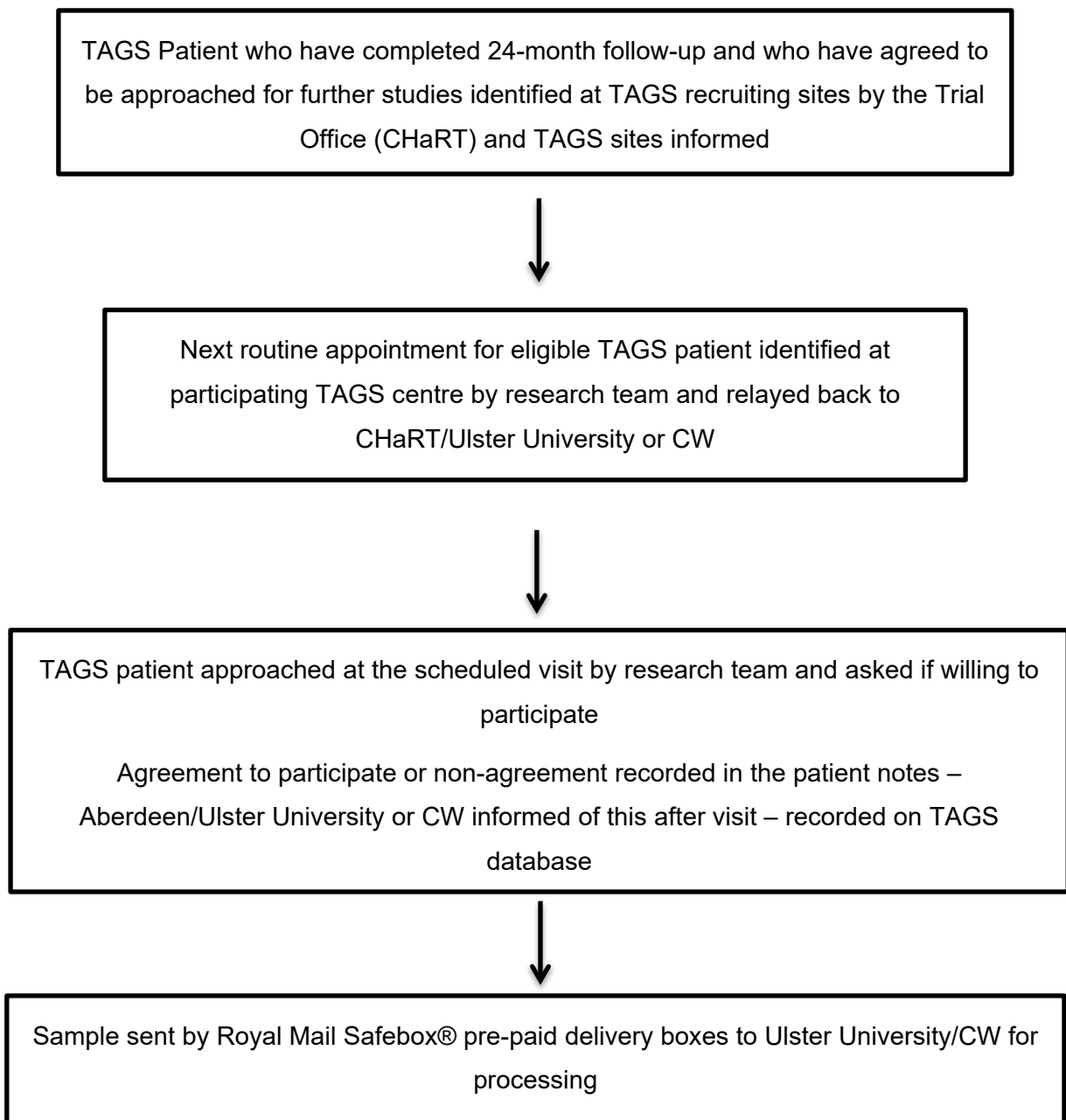
### **Data Management**

Quantitative data pertaining to subjects' phenotypes and demographics (disease status-related) and genotypic (e.g. GWAS, WES, sequencing data) will be used and generated by this study. Anonymised phenotype data will be stored by the TAGS Trials Office and anonymised sequence data will be stored in multiple formats including bam, VCF, fastq, seq, .xls, .xlsx and .xlsm given the diverse data processing and analysis required. All experiments will be documented in laboratory books according to standards of good practice, with protocol details and experimental outcomes documented and dated. Samples will be catalogued in appropriate secure and encrypted databases and will be anonymously shipped (DNA or RNA) to an outsourced contractor for sequencing, when required. The majority of data generated will be digitalised in various formats (see above) and stored as electronic data on password protected secure local workstations and servers. A dedicated password protected server is available for data back up and long-term storage, housed remotely from the primary workstations. Data generated and used by this project will be of value to the wider scientific community. Access to data generated or stored as part of this project will be administered through requests made to the CI and PI, in accordance with approval of relevant collaborators and project partners (e.g. UKGGC and the IGGC). External academic collaborators will be bound by signed data or material transfer agreements as appropriate. All users will be expected to acknowledge the source of the data.

### **Publication policy**

Publications arising from this study will be publicly available via open-access publication or via institutional repositories. On the TAGS specific genetics papers Prof Anthony King and Prof Colin Willoughby will be joint senior authors and the first authors will be represented by the research scientists performing the day to day experimentation and analyses.

### **TAGS Genetics Pathway**



## References

- Bamshad, M. J. *et al.* (2011) 'Exome sequencing as a tool for Mendelian disease gene discovery', *Nature Reviews Genetics*, 12(11), pp. 745–755. doi: 10.1038/nrg3031.
- Bansal, V. *et al.* (2010) 'Statistical analysis strategies for association studies involving rare variants', *Nature Reviews Genetics*, 11(11), pp. 773–785. doi: 10.1038/nrg2867.
- Burdon, K. P. *et al.* (2011) 'Genome-wide association study identifies susceptibility loci for open angle glaucoma at TMCO1 and CDKN2B-AS1', *Nat Genet.* 2011/05/03, 43(6), pp. 574–578. doi: ng.824 [pii]10.1038/ng.824.
- Charlesworth, J. *et al.* (2010) 'The Path to Open-Angle Glaucoma Gene Discovery: Endophenotypic Status of Intraocular Pressure, Cup-to-Disc Ratio, and Central Corneal Thickness', *Investigative Ophthalmology & Visual Science*, 51(7), p. 3509. doi: 10.1167/iovs.09-4786.
- Ferre-Fernández, J.-J. *et al.* (2017) 'Whole-Exome Sequencing of Congenital Glaucoma Patients Reveals Hypermorphic Variants in GPATCH3, a New Gene Involved in Ocular and Craniofacial Development', *Scientific Reports*. Nature Publishing Group, 7(1), p. 46175. doi: 10.1038/srep46175.
- Fingert, J. H. *et al.* (2011) 'Copy number variations on chromosome 12q14 in patients with normal tension glaucoma.', *Human molecular genetics*, 20(12), pp. 2482–94. doi: 10.1093/hmg/ddr123.
- Gemenetzi, M., Yang, Y. and Lotery, A. J. (2011) 'Current concepts on primary open-angle glaucoma genetics: a contribution to disease pathophysiology and future treatment', *Eye*. Nature Publishing Group, 26(3), pp. 355–369. doi: 10.1038/eye.2011.309.
- Hysi, P. G. *et al.* (2014) 'Genome-wide analysis of multi-ancestry cohorts identifies new loci influencing intraocular pressure and susceptibility to glaucoma', *Nature Genetics*, 46(10), pp. 1126–1130. doi: 10.1038/ng.3087.
- Khawaja, A. P. *et al.* (2018) 'Genome-wide analyses identify 68 new loci associated with intraocular pressure and improve risk prediction for primary open-angle glaucoma', *Nature Genetics*, 50(6), pp. 778–782. doi: 10.1038/s41588-018-0126-8.
- Lascaratos, G. *et al.* (2012) 'Mitochondrial dysfunction in glaucoma: Understanding genetic influences', *Mitochondrion*. © Elsevier B.V. and Mitochondria Research Society. All rights reserved., 12, pp. 202–212. doi: 10.1016/j.mito.2011.11.004.
- Manolio, T. A. *et al.* (2009) 'Finding the missing heritability of complex diseases', *Nature*, 461(7265), pp. 747–753. doi: 10.1038/nature08494.
- Monemi, S. *et al.* (2005) 'Identification of a novel adult-onset primary open-angle glaucoma (POAG) gene on 5q22.1.', *Human molecular genetics*, 14(6), pp. 725–33. doi: 10.1093/hmg/ddi068.
- Noh, Y. H. *et al.* (2013) 'Inhibition of oxidative stress by coenzyme Q10 increases mitochondrial mass and improves bioenergetic function in optic nerve head astrocytes', pp. 1–12. doi: 10.1038/cddis.2013.341.
- Ozel, A. B. *et al.* (2014) 'Genome-wide association study and meta-analysis of intraocular pressure', *Human Genetics*, 133(1), pp. 41–57. doi: 10.1007/s00439-013-1349-5.
- Pasutto, F. *et al.* (2009) 'Heterozygous NTF4 mutations impairing neurotrophin-4 signaling in patients with primary open-angle glaucoma', *Am J Hum Genet.* 2009/09/22, 85(4), pp. 447–456. doi: S0002-9297(09)00390-5 [pii]10.1016/j.ajhg.2009.08.016.
- Rezaie, T. *et al.* (2002) 'Adult-onset primary open-angle glaucoma caused by mutations in



optineurin', *Science*. 2002/02/09, 295(5557), pp. 1077–1079. doi: 10.1126/science.1066901295/5557/1077 [pii].

Souzeau, E. *et al.* (2011) 'The Australian and New Zealand Registry of Advanced Glaucoma: methodology and recruitment', *Clin Experiment Ophthalmol*. 2011/12/17. doi: 10.1111/j.1442-9071.2011.02742.x.

Souzeau, E. *et al.* (2013) 'Higher Prevalence of Myocilin Mutations in Advanced Glaucoma in Comparison with Less Advanced Disease in an Australasian', *OPHTHA*. American Academy of Ophthalmology, pp. 1–9. doi: 10.1016/j.ophttha.2012.11.029.

Stone, E. M. *et al.* (1997) 'Identification of a gene that causes primary open angle glaucoma', *Science*. 1997/01/31, 275(5300), pp. 668–670. doi: 10.1126/science.275.5300.668.

Sundaresan, P. *et al.* (2014) 'Original Research Article Whole-mitochondrial genome sequencing in primary open-angle glaucoma using massively parallel sequencing identifies novel and known pathogenic variants', (August), pp. 1–6. doi: 10.1038/gim.2014.121.

Thorleifsson, G. *et al.* (2010) 'Common variants near CAV1 and CAV2 are associated with primary open-angle glaucoma', *Nat Genet*. 2010/09/14, 42(10), pp. 906–909. doi: ng.661 [pii]10.1038/ng.661.

Turalba, A. V. and Chen, T. C. (2008) 'Clinical and Genetic Characteristics of Primary Juvenile-Onset Open-Angle Glaucoma (JOAG)', *Seminars in Ophthalmology*, 23(1), pp. 19–25. doi: 10.1080/08820530701745199.

Wiggs, J. L. *et al.* (1996) 'The distinction between juvenile and adult-onset primary open-angle glaucoma.', *American journal of human genetics*, 58(1), pp. 243–4. Available at: <http://www.ncbi.nlm.nih.gov/pubmed/8554064> (Accessed: 2 January 2019).

Wolfs, R. C. *et al.* (1998) 'Genetic risk of primary open-angle glaucoma. Population-based familial aggregation study.', *Archives of ophthalmology (Chicago, Ill. : 1960)*, 116(12), pp. 1640–5. Available at: <http://www.ncbi.nlm.nih.gov/pubmed/9869795> (Accessed: 2 January 2019).

Zhou, T. *et al.* (2017) 'Whole exome sequencing implicates eye development, the unfolded protein response and plasma membrane homeostasis in primary open-angle glaucoma', *PLOS ONE*. Edited by J. F. Hejtmancik, 12(3), p. e0172427. doi: 10.1371/journal.pone.0172427.

## **APPENDIX G - EXTENDED FOLLOW-UP OF PARTICIPANTS (to 10 years)**

The funder has agreed to fund extended follow-up of TAGS trial participants to 10 years – this component of the study is funded from October 2024 to March 2027; with the anticipation that data and sample collection will take place between January 2025 and December 2026.

### **Research question**

What is the long-term effectiveness of primary medical treatment compared with primary trabeculectomy (glaucoma surgery) for patients presenting with advanced glaucoma in terms of patient reported health status, visual outcome; and cost effectiveness at 10 years?

### **Health technologies being assessed**

Primary medical treatment (a stepped approach of medications) or primary surgery (augmented trabeculectomy).

### **Aim**

To determine whether primary medical treatment or primary surgery treatment (trabeculectomy) is more effective and cost-effective for patients presenting with advanced glaucoma after long-term follow-up (at 10 years)

### **Design**

A 10-year follow of participants recruited into the TAGS trial – a pragmatic randomised controlled trial comparing primary medical treatment and primary surgical treatment for patients presenting with advanced glaucoma.

### **Inclusion criteria**

Patients enrolled in the TAGS study who agreed to long-term follow-up.

### **Exclusion criteria**

Patients enrolled into TAGS who have withdrawn or are unable to complete long-term follow-up. Participants who did not consent to be contacted in the future for long term follow-up or who had previously withdrawn from TAGS will be excluded from the long-term follow-up study.

### **Outcomes to be assessed**

The outcomes to be collected mirror those collected at 5 years. The outcomes to be assessed are described in table G.1 below.

**Table G1 – outcomes to be collected at 10 years**

<b>Outcome</b>	<b>Assessment of outcome</b>
<b>Primary outcome</b>	
Vision specific Quality of Life (QoL) measured with NEI-VFQ-25	Patient completed questionnaire <sup>1</sup>
<b>Secondary outcomes</b>	
IOP	Measured/recorded at routine clinic follow-up <sup>2</sup>
Need for drops to control IOP	Measured/recorded at routine clinic follow-up <sup>2</sup>
Visual Field Mean Deviation (VFMD)	Measured/recorded at routine clinic follow-up <sup>2</sup>
LogMAR visual acuity (LVA)	Measured/recorded at routine clinic follow-up <sup>2</sup>
Adverse events and safety	Medical records and patient report during routine clinic follow-up <sup>2</sup>
Need for cataract surgery	Medical records
Need for further glaucoma surgery	Medical records
Loss of driving vision	Measured/recorded at routine clinic follow-up <sup>2</sup>
Registration as sight impaired	Medical records and patient report during routine clinic follow-up <sup>2</sup>
Glaucoma Treatment Compliance Assessment Tool (GTCAT)	Patient completed questionnaire <sup>1</sup>
General Health status: EQ-5D-5L and HUI-3	Patient completed questionnaire <sup>1</sup>
Glaucoma specific QoL: Glaucoma Utility Index (GUI)	Patient completed questionnaire <sup>1</sup>
Patient experience	Patient completed questionnaire <sup>1</sup>
<b>Economic outcomes</b>	
Lifetime incremental cost per QALY gained based on responses to EQ-5D	
Resource use and costs to NHS	

<sup>1</sup> We anticipate that the majority of trial participants will be attending for a routine follow-up visit during the follow-up period, and will be asked to complete the questionnaire during their routine visit. If they do not attend for a routine visit, the questionnaire will be sent to them by post. If participants prefer, they can complete their questionnaires at home. The questionnaires are identical to those completed by TAGS participants at the 5 year time-point, with the addition of GTCAT.

<sup>2</sup> These clinical outcomes are assessed as part of routine care of patients with glaucoma. We will record these routinely collected outcomes as part of the study data. In addition to the standard clinic care test results (IOP, glaucoma medications use, VFMD, LogMAR VA, Adverse events) at the 10 year visit, site staff will be asked to also record standard care test results from all routine follow-up visits between 5 and 10 year follow-up.

### **Methods:**

TAGS participants who consented to long-term follow-up will be invited to take part in the extended follow-up (to 10 years). The vast majority of trial participants will still be attending for routine follow-up visits at their local hospital.

The trial office team will establish, with each site, which of the TAGS participants remain in routine follow-up, and when their next scheduled follow-up appointment is likely to be. In the few months prior to their scheduled follow-up appointment, the trial office will write to the participant inviting them to take part in the 10 year follow-up at their next routine appointment. The letter will include information that the study data can be collected at their routine visit and that they will be invited to complete a questionnaire during their appointment. A brief information leaflet will be sent with this invitation letter, explaining what will happen if they agree to take part.

The site will be in touch (as normal) with participants before their routine appointment, providing them with a date and time of the routine appointment. The trial follow-up can be completed at that appointment.

The acceptable window for the 10-year follow-up is 10 years +/- 12 months, however if a participant is seen out with this window, but during our data collection period, data will be collected.

When the participant attends for their routine visit:

- A member of the research team will check that they are happy to continue in the study and have study data collected from the routine tests they will undergo. If the participant is happy for this to happen, the results of tests completed at the routine visit will be transcribed onto the study case report form.
- A member of the research team will also ask the participant to complete the 10 year questionnaire during their clinic visit (the participant may be happy for the results of their routine tests to be captured for the purposes of the study but may not wish to complete the study questionnaires).

If the participant is happy to complete the questionnaire during their appointment, a member of the site research team will collect it from the participant and arrange for data entry.

If the participant wishes to complete their questionnaire at home, they will be provided with a pre-paid envelope to return it to the study office. If participants would prefer to receive a copy of the questionnaire by post, the study office will post this out to the participant. As per the previous follow-up time-points, to maximise response rates, we will send a reminder letter and further questionnaire three weeks after the original questionnaire is issued and not returned, followed by a postal or phone call reminder for continuing non-responders.

- If the participant has not previously provided a sample for the *Advanced Glaucoma Genetic Screening Satellite Study* (Appendix F), they will be asked if they would like to provide a saliva sample for testing. This can be done at the visit. Sites will have a copy of the PIL and consent form for participants to complete.
- Ask them if they will be happy to receive a £25 shopping voucher as a “thank you” for their participation in the study.

Following their appointment, the trial office will send them a £25 voucher as a “thank you” for their participation in the study.

If a participant does not attend for their routine visit:

- If the routine visit is rescheduled (or at their next scheduled follow-up visit), the process described above can be followed. However, if participants are no longer receiving follow-up from the hospital that they were recruited in, or the next scheduled follow-up is after the end of data collection for this study, the study office will post a copy of the questionnaire to them. We propose to send their £25 “thank you” voucher with the questionnaire. As per the previous follow-up time-points, to maximise response rates, we will send a reminder letter and further questionnaire three weeks after the original questionnaire is issued and not returned, followed by a postal or phone call reminder for continuing non-responders.

- For participants who have consented to 10 years follow-up but are who are unable to attend for their routine 10 yr visit due to death, illness, loss to follow-up or inability to attend the hospital, data from their clinic notes up to their final recorded attendance will be collected and used in the study.

### **Safety reporting**

In the 10 year follow-up we will record data about the eye-related safety events detailed in section 8.0 of the trial protocol as outcome measures. These will be recorded on the trial case report forms. In addition, all deaths during extended follow-up will continue to be recorded on the SAE form. These will be collated in the study office and reported in the final report, but there will be no expedited reporting to Sponsor. In case of death before the 10 year follow-up, data for the participant up to and including their last available clinic visit before their death will be collected and added to the trial database. This should include results from the most recent visual field and visual acuity tests.

### **Sample size**

The sample size is fixed by the original TAGS design. The primary outcome is collected from participants and currently about 79% of the 401 that consented to LTFU are still providing primary outcome data (N=316). At 10 years assuming the same standard deviation of 16 in both groups and if we assume the same amount of attrition, we will retain approximately 250 (62%) of Long Term Follow Up cohort, the anticipated width of the 95% CI will be 7.9. Extra precision will be gained from using the yearly responses in a repeated measures analysis making use of all follow-up data.

### **Analysis**

#### *Statistical Analysis*

Following completion of the dataset, the full trial data will be reported for all randomised participants according to 10 year long term follow-up trial Statistical Analysis Plan. Analyses will be undertaken on an intention-to-treat basis. The primary outcome, VFQ-25 will be analysed using a heteroscedastic partially nested repeated measures mixed effects linear model adjusting for bilateral disease and baseline score and including a random effect for surgeon by using restricted maximum likelihood. Participant outcome could be truncated by death before 10-year follow-up outcome measures are taken. We do not currently have evidence that survival is impacted differentially by these treatments, we will explore this using the 10-year data.

Our primary analysis approach above implicitly imputes post-death outcomes along with data that is missing, but we do not see this as a problem because it will do so in the same way between treatment arms. On previous 5-year data this gave similar estimates to a while-alive approach<sup>61</sup>.

If we see a potential differential effect on survival, we will estimate a survival average causal effect which will estimate the average treatment effect for participants that would survive to 10 years regardless of the intervention allocated to.

Secondary outcomes (IOP, VA, VF, EQ-5D, HUI-3, GUI and GTCAT) will be analysed in a similar way.

For visual standard for driving, registration as sight impaired and need for drops, a Poisson model adjusting for bilateral disease and including surgeon as a random effect. For the

amount of cataract surgery, safety, and further surgery, participants might have varying follow-up times, therefore data will be presented as number (probability) and will be analysed using Cox regression adjusting for bilateral disease and presented as risk ratios. We will undertake subgroup analysis looking at potential effect modifications (sex, age, IOP, VF severity, SES).

### *Health Economic Analysis*

The primary economic evaluation will be a model-based cost-utility analysis with results presented in terms of the incremental cost per QALY gained over the estimated patient lifetime. For this analysis QALYs will be based upon responses to the EQ-5D-5L using data collected over the entire 10-year follow-up. Additional analyses will be conducted at for a 2-year, 5 year and 10-years timepoints to corresponded with the initial 2-year follow-up, the 5-year follow-up data and the follow-up for this long-term follow-up study. These analyses will be replicated for the QALY based upon the HUI and GUI tools. The economic model will be a refined version developed for the initial TAGS analysis. The principal refinements will be the incorporation of the information derived from the full 10-year follow-up of TAGS and updates to other model parameters.

The focus of the within trial analysis will be on analysing the data collected during the whole trial duration. This will include estimation of utilities for each of the three health status tools (EQ-5D, HUI3 and GUI), health and social care costs (with a focus on secondary care costs after the initial 2-year trial follow-up). Survival analysis techniques will be used to explore alternative extrapolation models for key model input parameters e.g. glaucoma progression, surgery rates, etc using best practice methods. Further assembly of model parameters will also follow best practice methods e.g. for costs and utilities not captured in the trial data.

As was conducted using for the 2-year data a full probabilistic analysis (PSA) will be conducted. The choice of distributions will be informed using best practice methods. Deterministic sensitivity analyses will also be conducted. As described above these will compare QALYs based upon the HUI and GUI. They will also consider the use of alternative cost estimates e.g. NHS reference costs for surgeries rather than costs based on micro costing as used in the main TAGS trial analysis; alternative extrapolation models, impact of any differential loss to follow-up, etc. In addition to sensitivity analyses, we will explore the impact on cost-effectiveness based on alternative patient group based upon socio-economic status and ethnicity. As part of model validation, we will compare model predicted estimate with the real-world data provided by the TAGS. This will include predictions for data used directly in the model and other trial data not used which the model will be configured to provide estimates of.

The additional follow-up will permit an extension of the linear regression models developed from the full trial's powered analysis (Section 9.0 and Statistical Analysis Plan). This will include a comparison of the primary outcome with data up to 10 years post-randomisation. We will also explore the profile of primary outcome over time by analysing repeated measures using a linear mixed model. Secondary outcomes will be analysed using a similar strategy with models suitable for the outcome (i.e. logistic regression for dichotomous outcome need for cataract surgery at 10 years).

### *Patient Reported Outcome Measure (PROM) analysis*

Using data on changes in visual impairment and PROM data we will explore the association between change in vision PROM score using appropriate regression methods. Taking change in PROM score between five and ten-years follow-up as the dependent variable, and change in vision as an explanatory variable controlling for patient characteristics, use of medications, etc.

### *Evaluation of relationship between QOL responses and clinical progression*

TAGS provides both longitudinal clinical and QoL data over a 10-year period. This would allow refinement of the relationship between clinical parameters such as visual field (extent and position of visual field loss) and visual acuity and changes in QoL experience by patients over this period. In addition, it would allow determination of differences in QOL responses between patients who had progressive glaucoma as defined by visual field and visual acuity loss and those who did not to be determined. It would also inform us as to whether we need to collect data from worse eye/better eye/both eyes to refine our future trial designs and ensure efficient data collection of the relevant outcomes is undertaken.

### **Management**

Trial management and statistical analysis will be undertaken in the TAGS Trial Office, University of Aberdeen. The trial office will also support the sites with data collection. The TAGS Project Management Group, consisting of grant holders and representatives from the Study Office will oversee the project.

## References

1. Minassian DC, Reidy A, Coffey M, Minassian A. Utility of predictive equations for estimating the prevalence and incidence of primary open angle glaucoma in the UK. *Br J Ophthalmol*. 2000;84(10):1159-61.
2. Bunce C, Xing W, Wormald R. Causes of blind and partial sight certifications in England and Wales: April 2007-March 2008. *Eye (Lond)*. 2010;24(11):1692-9.
3. Quartilho A, Simkiss P, Zekite A, Xing W, Wormald R, Bunce C. Leading causes of certifiable visual loss in England and Wales during the year ending 31 March 2013. *Eye (Lond)*. 2016;30(4):602-7.
4. Haymes SA, Leblanc RP, Nicolela MT, Chiasson LA, Chauhan BC. Risk of falls and motor vehicle collisions in glaucoma. *Invest Ophthalmol Vis Sci*. 2007;48(3):1149-55.
5. Ang GS, Eke T. Lifetime visual prognosis for patients with primary openangle glaucoma. *Eye (Lond)*. 2007;21(5):604-8.
6. Haymes SA, LeBlanc RP, Nicolela MT, Chiasson LA, Chauhan BC. Glaucoma and on-road driving performance. *Invest Ophthalmol Vis Sci*. 2008;49(7):3035-41.
7. Glen FC, Crabb DP, Smith ND, Burton R, Garway-Heath DF. Do patients with glaucoma have difficulty recognizing faces? *Invest Ophthalmol Vis Sci*. 2012;53(7):3629-37.
8. Burton R, Saunders LJ, Crabb DP. Areas of the visual field important during reading in patients with glaucoma. *Jpn J Ophthalmol*. 2015;59(2):94-102.
9. Burton R, Smith ND, Crabb DP. Eye movements and reading in glaucoma: observations on patients with advanced visual field loss. *Graefes Arch Clin Exp Ophthalmol*. 2014;52(10):1621-30.
10. Parrish RK, 2nd, Gedde SJ, Scott IU, Feuer WJ, Schiffman JC, Mangione CM, et al. Visual function and quality of life among patients with glaucoma. *Arch Ophthalmol*. 1997;115(11):1447-55.
11. Nelson P, Aspinall P, O'Brien C. Patients' perception of visual impairment in glaucoma: a pilot study. *Br J Ophthalmol*. 1999;83(5):546-52.
12. Nelson P, Aspinall P, Papasouliotis O, Worton B, O'Brien C. Quality of life in glaucoma and its relationship with visual function. *J Glaucoma*. 2003;12(2):139-50.
13. Gutierrez P, Wilson MR, Johnson C, Gordon M, Cioffi GA, Ritch R, et al. Influence of glaucomatous visual field loss on health-related quality of life. *Arch Ophthalmol*. 1997;115(6):777-84.
14. McKean-Cowdin R, Wang Y, Wu J, Azen SP, Varma R, Los Angeles Latino Eye Study G. Impact of visual field loss on health-related quality of life in glaucoma: the Los Angeles Latino Eye Study. *Ophthalmology*. 2008;115(6):941-8 e1.
15. Medeiros FA, Gracitelli CP, Boer ER, Weinreb RN, Zangwill LM, Rosen PN. Longitudinal changes in quality of life and rates of progressive visual field loss in glaucoma patients. *Ophthalmology*. 2015;122(2):293-301.
16. Mokhles P, Schouten JS, Beckers HJ, Azuara-Blanco A, Tuulonen A, Webers CA. A Systematic Review of End-of-Life Visual Impairment in Open-Angle Glaucoma: An Epidemiological Autopsy. *J Glaucoma*. 2016;25(7):623-8.
17. Peters D, Bengtsson B, Heijl A. Factors associated with lifetime risk of open-angle glaucoma blindness. *Acta Ophthalmol*. 2014;92(5):421-5.
18. Goh YW, Ang GS, Azuara-Blanco A. Lifetime visual prognosis of patients with glaucoma. *Clin Experiment Ophthalmol*. 2011;39(8):766-70.



19. Ernest PJ, Busch MJ, Webers CA, Beckers HJ, Hendrikse F, Prins MH, et al. Prevalence of end-of-life visual impairment in patients followed for glaucoma. *Acta Ophthalmol.* 2013;91(8):738-43.
20. Hattenhauer MG, Johnson DH, Ing HH, Herman DC, Hodge DO, Yawn BP, et al. The probability of blindness from open-angle glaucoma. *Ophthalmology.* 1998;105(11):2099-104.
21. Maier PC, Funk J, Schwarzer G, Antes G, Falck-Ytter YT. Treatment of ocular hypertension and open angle glaucoma: meta-analysis of randomised controlled trials. *BMJ.* 2005;331(7509):134.
22. Garway-Heath DF, Crabb DP, Bunce C, Lascaratos G, Amalfitano F, Anand N, et al. Latanoprost for open-angle glaucoma (UKGTS): a randomised, multicentre, placebo-controlled trial. *Lancet.* 2015;385(9975):1295-304.
23. Kass MA, Heuer DK, Higginbotham EJ, Johnson CA, Keltner JL, Miller JP, et al. The Ocular Hypertension Treatment Study: a randomized trial determines that topical ocular hypotensive medication delays or prevents the onset of primary open-angle glaucoma. *Arch Ophthalmol.* 2002;120(6):701-13; discussion 829-30.
24. Glaucoma; Diagnosis and management of chronic open angle glaucoma and ocular hypertension CG85. National Institute for Care and Excellence (NICE). London 2009.
25. Burr JM, Mowatt G, Hernandez R, Siddiqui MA, Cook J, Lourenco T, et al. The clinical effectiveness and cost-effectiveness of screening for open angle glaucoma: a systematic review and economic evaluation. *Health Technol Assess.* 2007;11(41):iii-iv, ix-x, 1-190.
26. Coffey M, Reidy A, Wormald R, Xian WX, Wright L, Courtney P. Prevalence of glaucoma in the west of Ireland. *Br J Ophthalmol.* 1993;77(1):17-21.
27. Sheldrick JH, Ng C, Austin DJ, Rosenthal AR. An analysis of referral routes and diagnostic accuracy in cases of suspected glaucoma. *Ophthalmic Epidemiol.* 1994;1(1):31-9.
28. Sukumar S, Spencer F, Fenerty C, Harper R, Henson D. The influence of socioeconomic and clinical factors upon the presenting visual field status of patients with glaucoma. *Eye (Lond).* 2009;23(5):1038-44.
29. Ng WS, Agarwal PK, Sidiki S, McKay L, Townend J, Azuara-Blanco A. The effect of socio-economic deprivation on severity of glaucoma at presentation. *Br J Ophthalmol.* 2010;94(1):85-7.
30. Elkington AR, MacKean J, P. S. A collaborative hospital glaucoma survey. *Res Clin Forums.* 1982;4:31-40.
31. Boodhna T, Crabb DP. Disease severity in newly diagnosed glaucoma patients with visual field loss: trends from more than a decade of data. *Ophthalmic Physiol Opt.* 2015;35(2):225-30.
32. Morley AM, Murdoch I. The future of glaucoma clinics. *Br J Ophthalmol.* 2006;90(5):640-5.
33. Healthy Lives, Healthy People: Improving outcomes and supporting transparency. London: DoH; 2012.
34. Burr J, Azuara-Blanco A, Avenell A, Tuulonen A. Medical versus surgical interventions for open angle glaucoma. *Cochrane Database Syst Rev.* 2012;9:CD004399.
35. Jay JL, Murray SB. Early trabeculectomy versus conventional management in primary open angle glaucoma. *Br J Ophthalmol.* 1988;72(12):881-9.

36. Migdal C, Gregory W, Hitchings R. Long-term functional outcome after early surgery compared with laser and medication in open-angle glaucoma. *Ophthalmology*. 1994;101(10):1651-6; discussion 7.
37. Lichter PR, Musch DC, Gillespie BW, Guire KE, Janz NK, Wren PA, et al. Interim clinical outcomes in the Collaborative Initial Glaucoma Treatment Study comparing initial treatment randomized to medications or surgery. *Ophthalmology*. 2001;108(11):1943-53.
38. Smith R. A comparison between medical and surgical treatment of glaucoma simplex--results of a prospective study. *Trans Ophthalmol Soc Aust*. 1968;27:17-29.
39. Stead R, Azuara-Blanco A, King AJ. Attitudes of consultant ophthalmologists in the UK to initial management of glaucoma patients presenting with severe visual field loss: a national survey. *Clin Experiment Ophthalmol*. 2011;39(9):858-64.
40. Glaucoma: diagnosis and management (NG81). National Institute for Care and Excellence (NICE) London: DoH; 2017.
41. Musch DC, Gillespie BW, Niziol LM, Janz NK, Wren PA, Rockwood EJ, et al. Cataract extraction in the collaborative initial glaucoma treatment study: incidence, risk factors, and the effect of cataract progression and extraction on clinical and quality-of-life outcomes. *Arch Ophthalmol*. 2006;124(12):1694-700.
42. Jampel H. Trabeculectomy: more effective at causing cataract surgery than lowering intraocular pressure? *Ophthalmology*. 2009;116(2):173-4.
43. Lamoureux EL, Fenwick E, Pesudovs K, Tan D. The impact of cataract surgery on quality of life. *Curr Opin Ophthalmol*. 2011;22(1):19-27.
44. Rebolleda G, Munoz-Negrete FJ. Effect of cataract surgery on IOP after trabeculectomy. *J Cataract Refract Surg*. 2003;29(11):2043; author reply
45. Longo A, Uva MG, Reibaldi A, Avitabile T, Reibaldi M. Long-term effect of phacoemulsification on trabeculectomy function. *Eye (Lond)*. 2015;29(10):1347- 52.
46. Nguyen DQ, Niyadurupola N, Tapp RJ, O'Connell RA, Coote MA, Crowston JG. Effect of phacoemulsification on trabeculectomy function. *Clin Exp Ophthalmol*. 2014;42(5):433-9.
47. Siriwardena D, Kotecha A, Minassian D, Dart JK, Khaw PT. Anterior chamber flare after trabeculectomy and after phacoemulsification. *Br J Ophthalmol*. 2000;84(9):1056-7.
48. Musch DC, Gillespie BW, Palmberg PF, Spaeth G, Niziol LM, Lichter PR. Visual field improvement in the collaborative initial glaucoma treatment study. *Am J Ophthalmol*. 2014;158(1):96-104 e2.
49. Musch DC, Gillespie BW, Lichter PR, Niziol LM, Janz NK, Investigators CS. Visual field progression in the Collaborative Initial Glaucoma Treatment Study the impact of treatment and other baseline factors. *Ophthalmology*. 2009;116(2):200-7.
50. Musch DC, Gillespie BW, Niziol LM, Lichter PR, Varma R, Group CS. Intraocular pressure control and long-term visual field loss in the Collaborative Initial Glaucoma Treatment Study. *Ophthalmology*. 2011;118(9):1766-73.
51. The Advanced Glaucoma Intervention Study (AGIS): 7. The relationship between control of intraocular pressure and visual field deterioration. The AGIS Investigators. *Am J Ophthalmol*. 2000;130(4):429-40.
52. Tsai JC. A comprehensive perspective on patient adherence to topical glaucoma therapy. *Ophthalmology*. 2009;116(11 Suppl):S30-6.
53. Edmunds B, Thompson JR, Salmon JF, Wormald RP. The National Survey of Trabeculectomy. III. Early and late complications. *Eye (Lond)*. 2002;16(3):297-303.

54. Burr J, Azuara-Blanco A, Avenell A, Tuulonen A. Medical versus surgical interventions for open angle glaucoma. *Cochrane Database Syst Rev*. 2012(9):CD004399.
55. Meads C, Hyde C. What is the cost of blindness? *Br J Ophthalmol*. 2003;87(10):1201-4.
56. Chakravarthy U, Biundo E, Saka RO, Fasser C, Bourne R, Little JA. The Economic Impact of Blindness in Europe. *Ophthalmic Epidemiol*. 2017;24(4):239-47.
57. Lee PP, Walt JG, Doyle JJ, Kotak SV, Evans SJ, Budenz DL, et al. A multicenter, retrospective pilot study of resource use and costs associated with severity of disease in glaucoma. *Arch Ophthalmol*. 2006;124(1):12-9.
58. Janz NK, Wren PA, Lichter PR, Musch DC, Gillespie BW, Guire KE, et al. The Collaborative Initial Glaucoma Treatment Study: interim quality of life findings after initial medical or surgical treatment of glaucoma. *Ophthalmology*. 2001;108(11):1954-65.
59. Musch DC, Gillespie BW, Niziol LM, Cashwell LF, Lichter PR, Collaborative Initial Glaucoma Treatment Study G. Factors associated with intraocular pressure before and during 9 years of treatment in the Collaborative Initial Glaucoma Treatment Study. *Ophthalmology*. 2008;115(6):927-33.
60. Wong MH, Husain R, Ang BC, Gazzard G, Foster PJ, Htoon HM, et al. The Singapore 5-fluorouracil trial: intraocular pressure outcomes at 8 years. *Ophthalmology*. 2013;120(6):1127-34.
61. King AJ, Hudson, J, Azuara-Blanco A, Burr J, Kernohan A, Homer T, et al. Evaluating Primary Treatment for People with Advanced Glaucoma: Five-Year Results of the Treatment of Advanced Glaucoma Study. *Ophthalmology*. 2024;131(7):759-70.